

MHZ VORTAC 113.2 Chan 79	APP CRS 175°	Rwy Idg 8500 TDZE 320 Apt Elev 346
--	------------------------	---

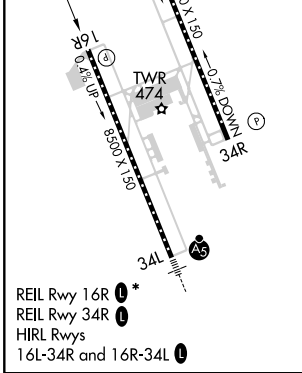
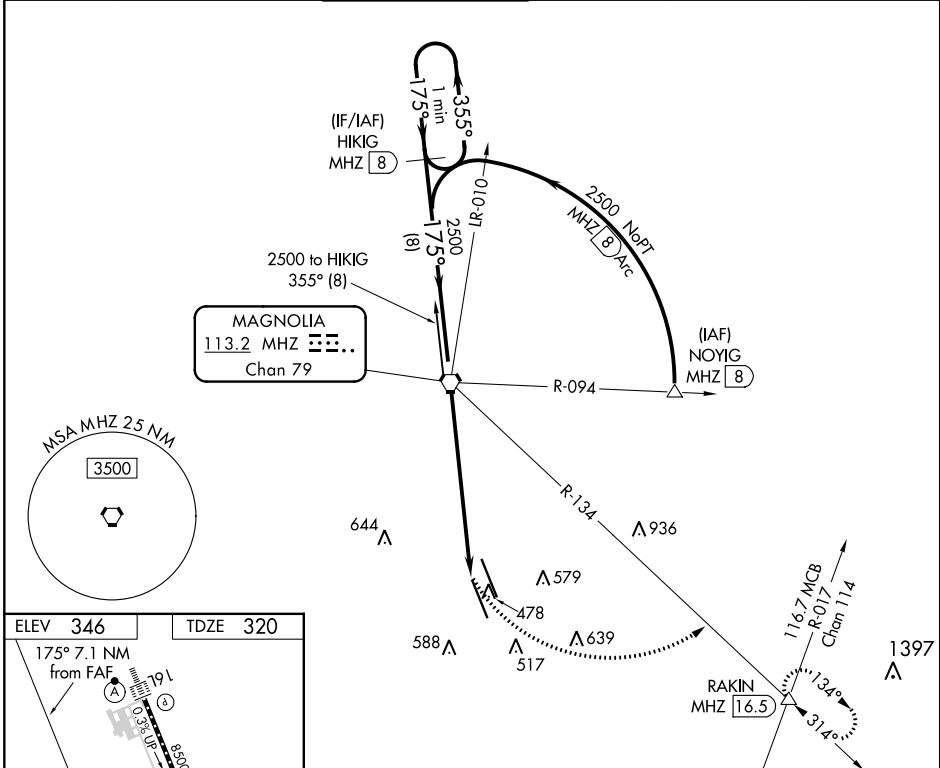
VOR/DME or TACAN RWY 16R

JACKSON-MEDGAR WILEY EVERS INTL (JAN)

▽ VDP NA with Hawkins Field altimeter setting. When local altimeter setting not received, use Hawkins Field altimeter setting and increase all MDA 20 feet; increase S-16R Cats C/D/E visibility 1/8 mile. Circling NA for Cat E SW of Rwy 16R-34L. Helicopter visibility reduction below 3/4 SM NA.

MISSED APPROACH: Climbing left turn to 3000 on heading 103° and MHZ VORTAC R-134 to RAKIN INT/ MHZ 16.5 DME and hold.

ATIS 121.05	JACKSON APP CON * 123.9 317.7	JACKSON TOWER * 120.9 (CTAF) 352.0	GND CON 121.7 348.6	120.7 0*	UNICOM 122.95
-----------------------	---	--	-------------------------------	-----------------	-------------------------



One Minute Holding Pattern	VGS and descent angles not coincident (VGS Angle 3.00/TCH 80).		3000	RAKIN	
	HIKIG MHZ 8	VORTAC	hdg 103°	MHZ R-134	
2500 ← 355° → 175° → 2500		MHZ 5.6 MHZ 7.1			
8 NM		5.5 NM 1.6			
CATEGORY	A	B	C	D	E
S-16R	880-1	560 (600-1)	880-1 5/8	560 (600-1 5/8)	
C CIRCLING	880-1	534 (600-1)	900-1 1/2 554 (600-1 1/2)	960-2 614 (700-2)	1040-2 1/2 694 (700-2 1/2)

VOR/DME or TACAN RWY 16R

SC-4, 10 OCT 2019 to 07 NOV 2019

SC-4, 10 OCT 2019 to 07 NOV 2019