

VORTAC MHZ 113.2 Chan 79	APP CRS 352°	Rwy Idg TDZE Apt Elev	8500 329 346
--	------------------------	-----------------------------	---

VOR/DME or TACAN RWY 34L

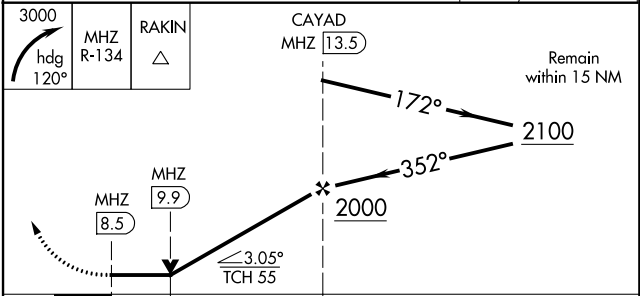
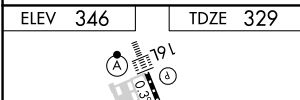
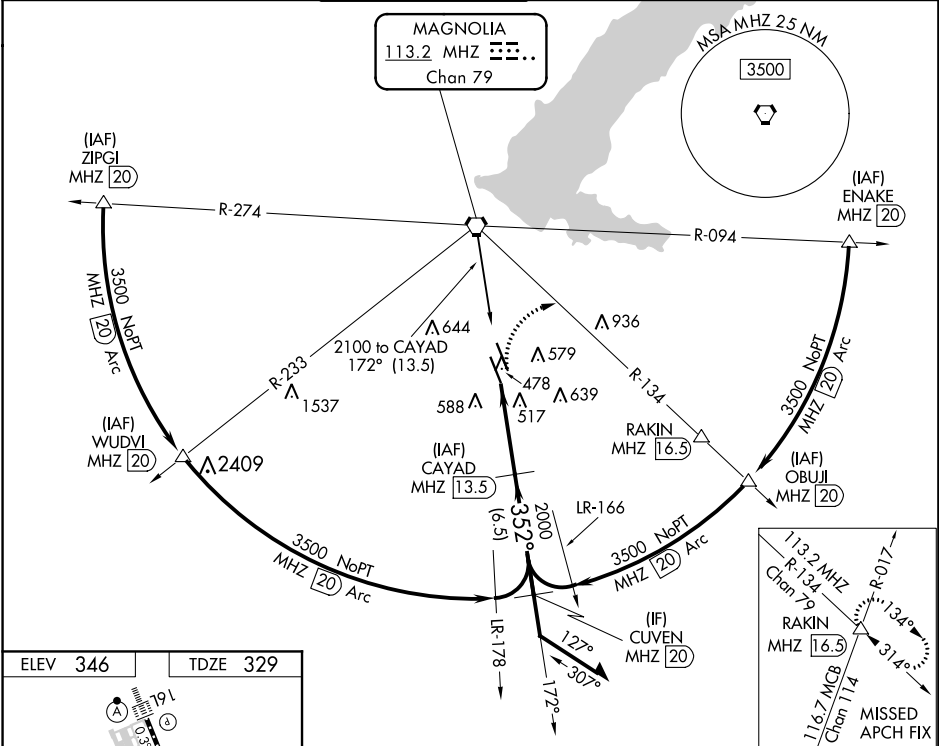
JACKSON-MEDGAR WILEY EVERS INTL (JAN)

⚠ When local altimeter setting not received, use Hawkins Field altimeter setting and increase all MDA 20 feet; increase S-34L Cats C/D/E visibility 1/8 mile.
⚠ Circling NA for Cat E southwest of Rwy 16R-34L. Helicopter visibility reduction below 3/4 SM NA.



MISSED APPROACH: Climbing right turn to 3000 on heading 120° and MHZ VORTAC R-134 to RAKIN INT/ MHZ 16.5 DME and hold.

ATIS 121.05	JACKSON APP CON* 123.9 317.7	JACKSON TOWER* 120.9 (CTAF) 352.0	GND CON 121.7 348.6	120.7 0*	UNICOM 122.95
-----------------------	--	---	-------------------------------	-----------------	-------------------------



CATEGORY	A	B	C	D	E
S-34L	840/55	511 (500-1)	840-1 3/8	511 (500-1 3/8)	
C CIRCLING	880-1	534 (600-1)	900-1 1/2 554 (600-1 1/2)	960-2 614 (700-2)	1040-2 1/2 694 (700-2 1/2)

SC-4, 10 OCT 2019 to 07 NOV 2019

SC-4, 10 OCT 2019 to 07 NOV 2019