

VORTAC MHZ 113.2 Chan 79	APP CRS 349°	Rwy Idg TDZE Apt Elev	8500 346 346
--	------------------------	-----------------------------	---

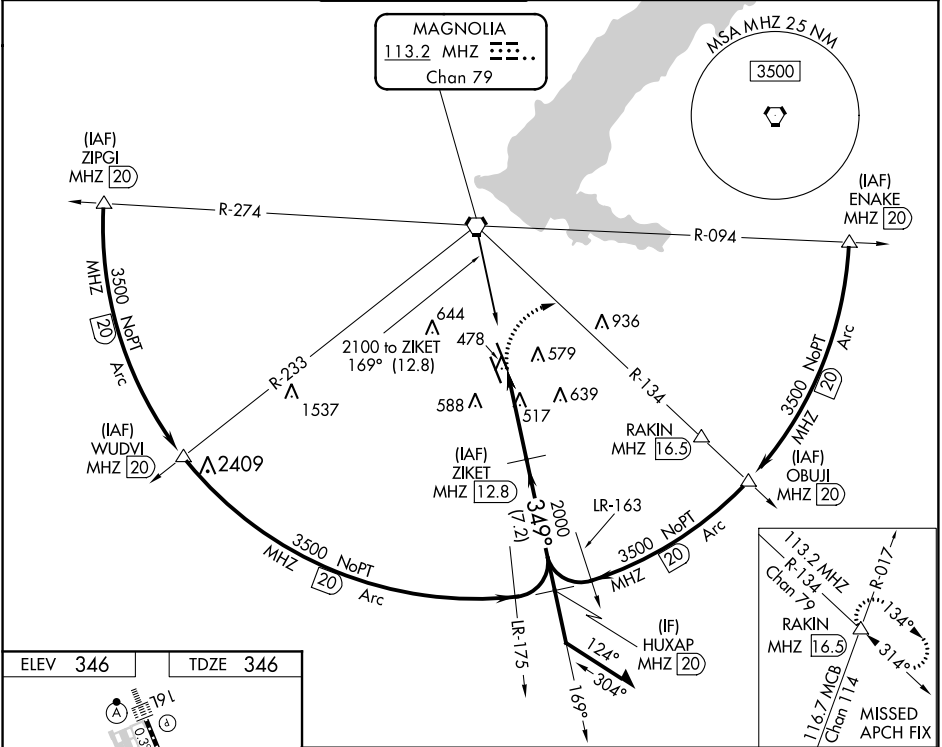
VOR/DME or TACAN RWY 34R

JACKSON-MEDGAR WILEY EVERS INTL (JAN)

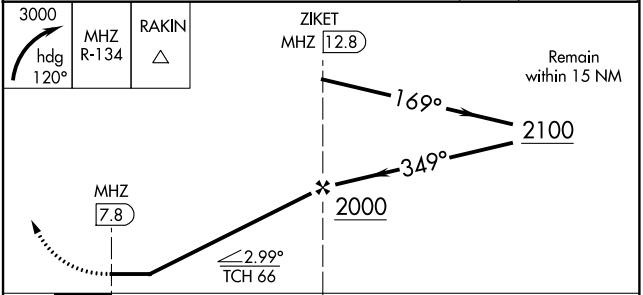
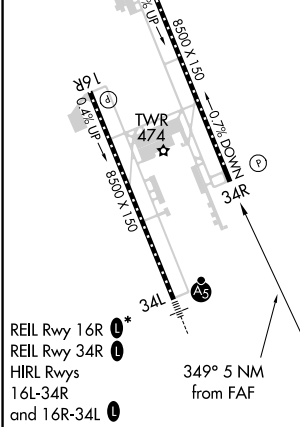
When local altimeter setting not received, use Hawkins Field altimeter setting and increase all MDA 20 feet; increase S-34R Cats C/D/E visibility $\frac{1}{8}$ mile. Circling NA for Cat E southwest of Rwy 16R-34L. Helicopter visibility reduction below $\frac{3}{4}$ SM NA.

MISSED APPROACH: Climbing right turn to 3000 on heading 120° and MHZ VORTAC R-134 to RAKIN INT/ MHZ 16.5 DME and hold.

ATIS 121.05	JACKSON APP CON* 123.9 317.7	JACKSON TOWER* 120.9 (CTAF) 352.0	GND CON 121.7 348.6	120.7 0*	UNICOM 122.95
-----------------------	--	---	-------------------------------	-----------------	-------------------------



ELEV 346	TDZE 346
-----------------	-----------------



CATEGORY	A	B	C	D	E
S-34R	920/55	574 (600-1)	920-1 $\frac{5}{8}$	574 (600-1 $\frac{5}{8}$)	
CIRCLING	920-1	574 (600-1)	920-1 $\frac{1}{2}$ 574 (600-1 $\frac{1}{2}$)	960-2 614 (700-2)	1040-2 $\frac{1}{2}$ 694 (700-2 $\frac{1}{2}$)

SC-4, 10 OCT 2019 to 07 NOV 2019

SC-4, 10 OCT 2019 to 07 NOV 2019