

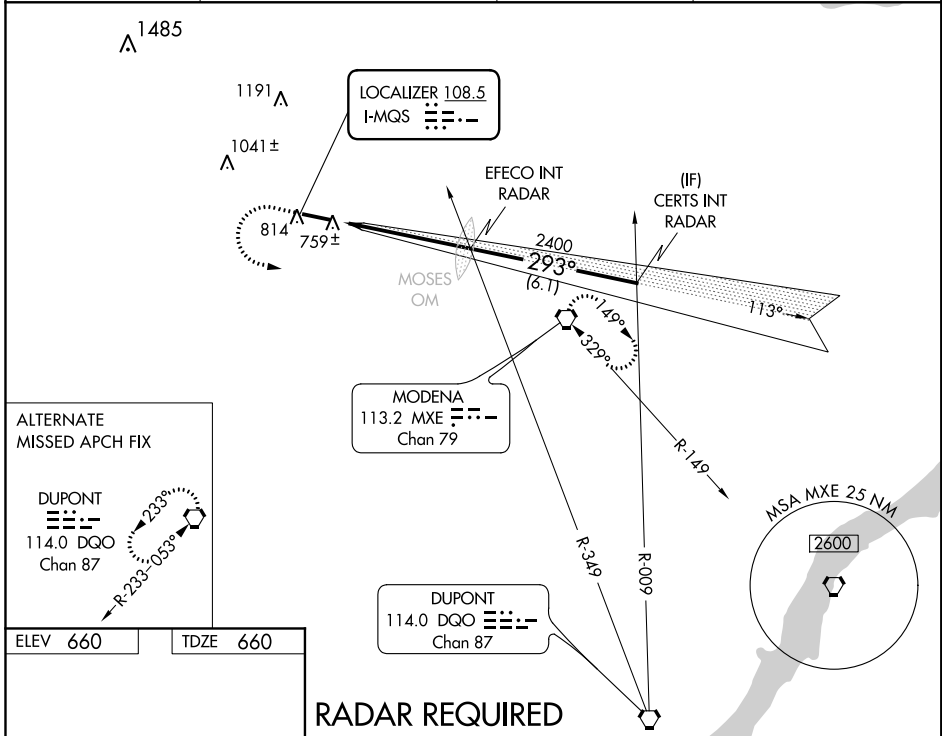
LOC I-MQS <b>108.5</b>	APP CRS <b>293°</b>	Rwy Idg 5400	TDZE 660
		Apt Elev 660	

**ILS or LOC RWY 29**  
CHESTER COUNTY G.O. CARLSON (MQS)

**⚠** Rwy 29 helicopter visibility reduction below 3/4 SM NA. When local altimeter setting not received, use Pottstown-Limerick altimeter setting and increase all DA 98 feet, and all MDA 100 feet, S-ILS 29 visibility 1/4 mile all Cats, S-LOC 29 visibility Cats C and D 1/4 mile, and Circling visibility Cat C and D 1/2 mile.

**⚠** MISSED APPROACH: Climb to 1300 then climbing left turn to 2400 direct MXE VORTAC and hold.

AWOS-3 <b>126.25</b>	PHILADELPHIA APP CON <b>124.35 319.15</b>	CLNC DEL <b>125.6</b>	UNICOM <b>122.7 (CTAF) 0</b>
-------------------------	--	--------------------------	---------------------------------



**ALTERNATE MISSED APCH FIX**

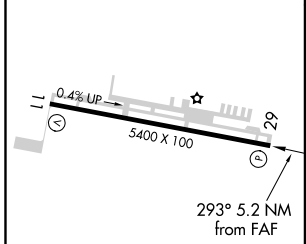
**DUPONT**  
114.0 DGO  
Chan 87

**MODENA**  
113.2 MXE  
Chan 79

**DUPONT**  
114.0 DGO  
Chan 87

**MSA MXE 25 NM**  
2600

ELEV 660	TDZE 660
----------	----------



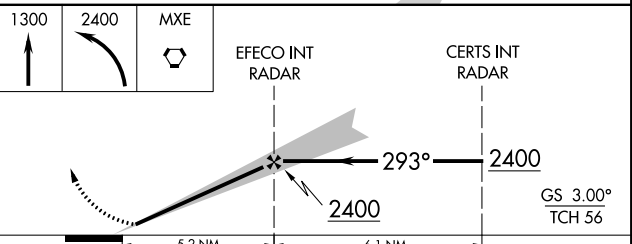
HIRL Rwy 11-29 0

REIL Rwy 11-29 0

FAF to MAP 5.2 NM

Knots	60	90	120	150	180
Min:Sec	5:12	3:28	2:36	2:05	1:44

**RADAR REQUIRED**



CATEGORY	A	B	C	D
S-ILS 29	919-1 259 (300-1)			
S-LOC 29	1040-1	380 (400-1)		1040-1 1/4 380 (400-1 1/4)
CIRCLING	1140-1	480 (500-1)	1220-1 1/2 560 (600-1 1/2)	1260-2 600 (600-2)

NE-4, 10 OCT 2019 to 07 NOV 2019

NE-4, 10 OCT 2019 to 07 NOV 2019