

WAAS CH <b>63006</b> <b>W11A</b>	APP CRS <b>113°</b>	Rwy Idg TDZE Apt Elev	<b>5400</b> <b>644</b> <b>660</b>
--	------------------------	-----------------------------	---

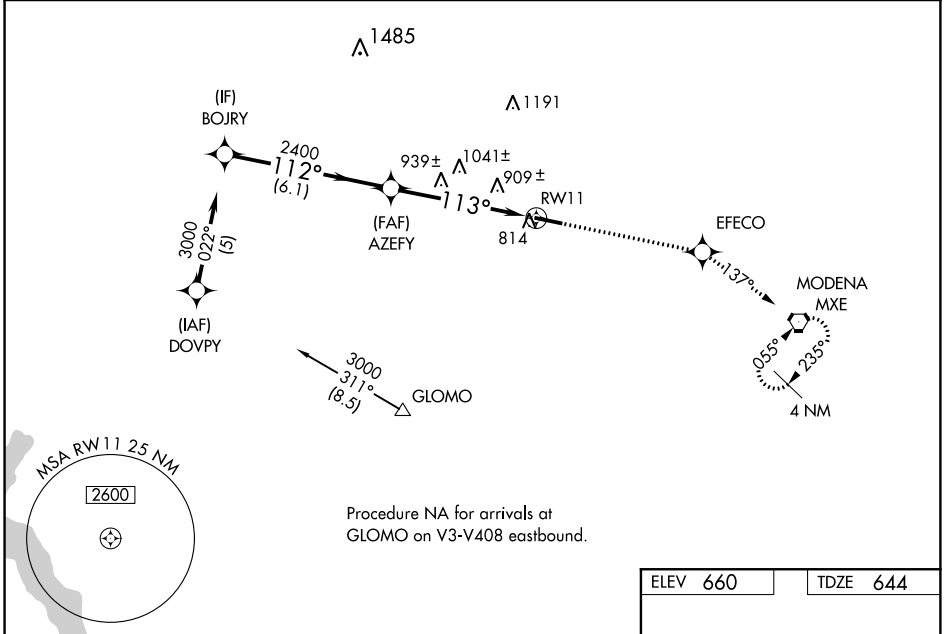
# RNAV (GPS) RWY 11

CHESTER COUNTY G.O. CARLSON (MQS)

**⚠** Baro-VNAV NA when using Heritage Field altimeter setting. For uncompensated Baro-VNAV systems, LNAV/VNAV NA below -16°C (4°F) or above 47°C (116°F). DME/DME RNP-0.3 NA. Rwy 11 helicopter visibility reduction below 3/4 SM NA. When local altimeter setting not received, use Heritage Field altimeter setting and increase all DA 98 feet and all MDA 100 feet, LPV visibility 1/2 mile all Cats, LNAV/VNAV visibility 1/2 mile all Cats, LNAV visibility Cats C and D 1/4 mile, and Circling visibility Cat C and D 1/4 mile.

**MISSED APPROACH:**  
Climb to 2400 direct EFECO and on 137° track to MXE VORTAC and hold.

AWOS-3 <b>126.25</b>	PHILADELPHIA APP CON <b>124.35 319.15</b>	CLNC DEL <b>125.6</b>	UNICOM <b>122.7 (CTAF) ①</b>
-------------------------	--	--------------------------	---------------------------------



NE-4, 10 OCT 2019 to 07 NOV 2019

NE-4, 10 OCT 2019 to 07 NOV 2019

BOJRY	3000	112°	AZEFY	2400	113°	RW11	EFECO	137° tr	MXE
6.1 NM		5.3 NM							
CATEGORY	A	B	C	D					
LPV DA	955-1		311 (300-1)						
LNAV/VNAV DA	1274-2 1/4		630 (700-2 1/4)						
LNAV MDA	1200-1	556 (600-1)	1200-1 1/2	556 (600-1 1/2)	1200-1 3/4	556 (600-1 3/4)			
CIRCLING	1200-1	540 (600-1)	1220-1 1/2	560 (600-1 1/2)	1260-2	600 (600-2)			

