

WAAS CH 69321 W17A	APP CRS 166°	Rwy Idg 4394 TDZE 478 Apt Elev 495
--	------------------------	---

RNAV (GPS) RWY 17

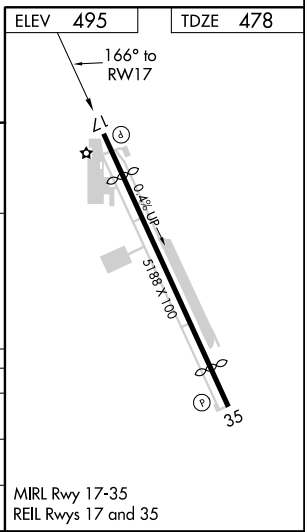
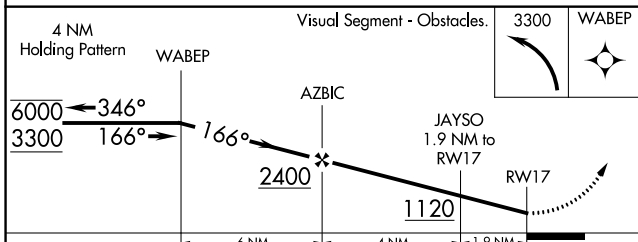
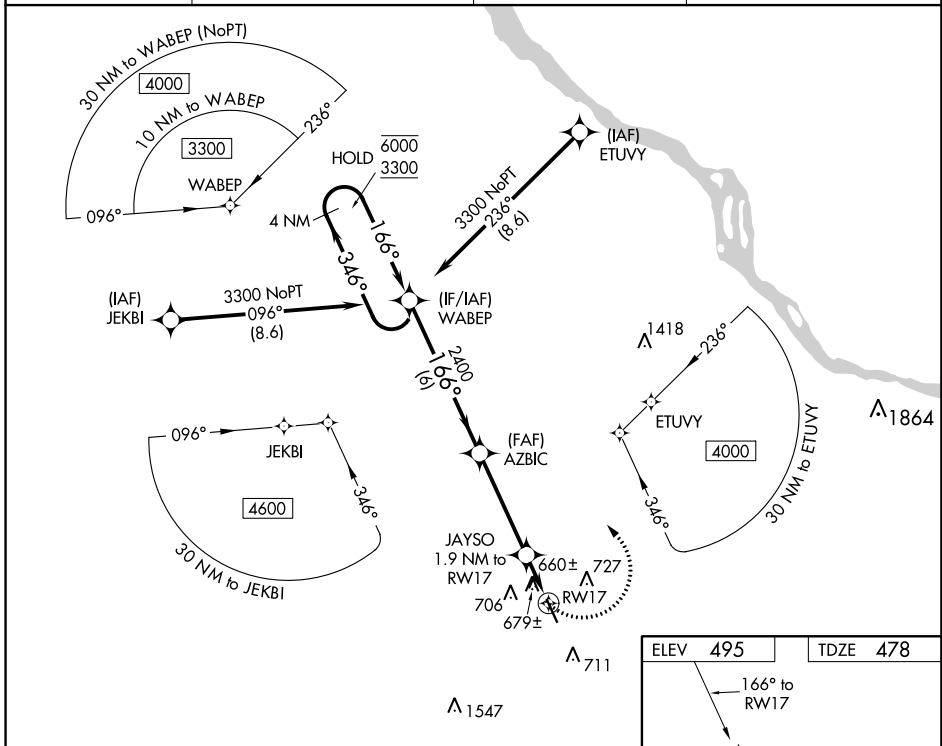
YORK (THV)

RNP APCH.

- ▼ Rwy 17 helicopter visibility reduction below 1 SM NA.
- ▲ Straight-in Rwy 17 NA at night, Circling Rwy 17 NA at night.

MISSED APPROACH: Climbing left turn to 3300 direct WABEP and hold.

ASOS 119.275	HARRISBURG APP CON 124.1 273.525	CLNC DEL 121.65	UNICOM 123.0 (CTAF)
------------------------	--	---------------------------	-------------------------------



CATEGORY	A	B	C	D
LP MDA	920-1	442 (500-1)	920-1 $\frac{3}{8}$	442 (500-1 $\frac{3}{8}$)
LNAV MDA	940-1	462 (500-1)	940-1 $\frac{3}{8}$	462 (500-1 $\frac{3}{8}$)
CIRCLING	1220-1 725 (800-1)	1240-1 745 (800-1)	1260-2 $\frac{1}{4}$ 765 (800-2 $\frac{1}{4}$)	1260-2 $\frac{1}{2}$ 765 (800-2 $\frac{1}{2}$)

MIRL Rwy 17-35
REIL Rwy 17 and 35

NE-4, 10 OCT 2019 to 07 NOV 2019

NE-4, 10 OCT 2019 to 07 NOV 2019