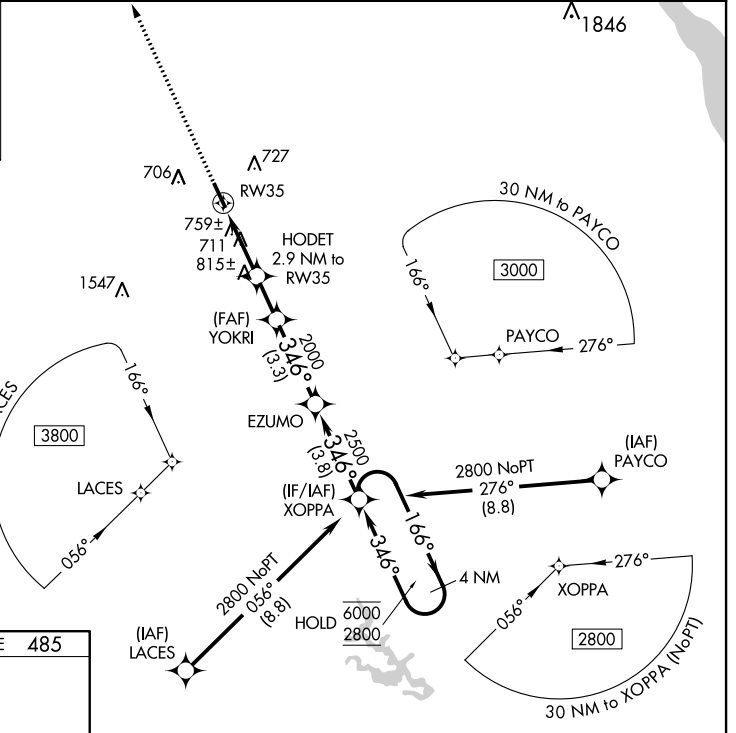
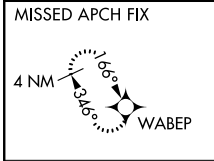


WAAS CH <b>72821</b> <b>W35A</b>	APP CRS <b>346°</b>	Rwy Idg <b>4449</b> TDZE <b>485</b> Apt Elev <b>495</b>
--	------------------------	---

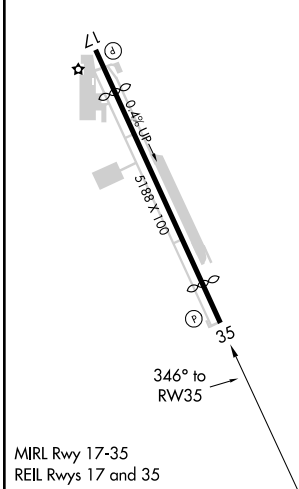
# RNAV (GPS) RWY 35

YORK (THV)

RNP APCH.		MISSED APPROACH: Climb to 3300 direct WABEP and hold.	
<p>▼ Circling Rwy 17 NA at night. ▲ Rwy 35 helicopter visibility reduction below ¾ SM NA.</p>		ASOS <b>119.275</b>	HARRISBURG APP CON <b>124.1 273.525</b>
		CLNC DEL <b>121.65</b>	UNICOM <b>123.0 (CTAF)</b>



ELEV <b>495</b>	TDZE <b>485</b>
-----------------	-----------------



Visual Segment - Obstacles.		XOPPA 4 NM Holding Pattern	
3300 WABEP	YOKRI	EZUMO	XOPPA
↑	HODET 2.9 NM to RW35	2500	6000 / 2800
1.3 NM to RW35	1.6 NM	1.7 NM	3.3 NM
1440	2000	2500	6000 / 2800
1.3 NM	1.6 NM	1.7 NM	3.3 NM
CATEGORY	A	B	C
LP MDA	1020-1	535 (600-1)	1020-1½ 535 (600-1½)
LNAV MDA	1080-1	595 (600-1)	1080-1¾ 595 (600-1¾)
CIRCLING	1220-1 725 (800-1)	1240-1 745 (800-1)	1260-2¼ 765 (800-2¼) 1260-2½ 765 (800-2½)

NE-4, 10 OCT 2019 to 07 NOV 2019

NE-4, 10 OCT 2019 to 07 NOV 2019