

LOC/DME I-GVT <b>110.5</b> Chan <b>42</b>	APP CRS <b>176°</b>	Rwy Idg TDZE Apt Elev	<b>8030</b> <b>534</b> <b>535</b>
---	------------------------	-----------------------------	---

# ILS Y or LOC Y RWY 17

MAJORS (GVT)

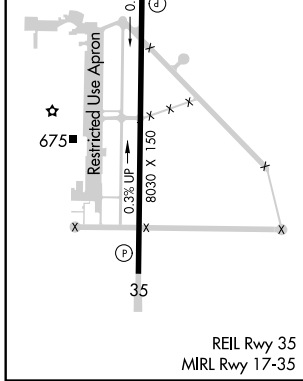
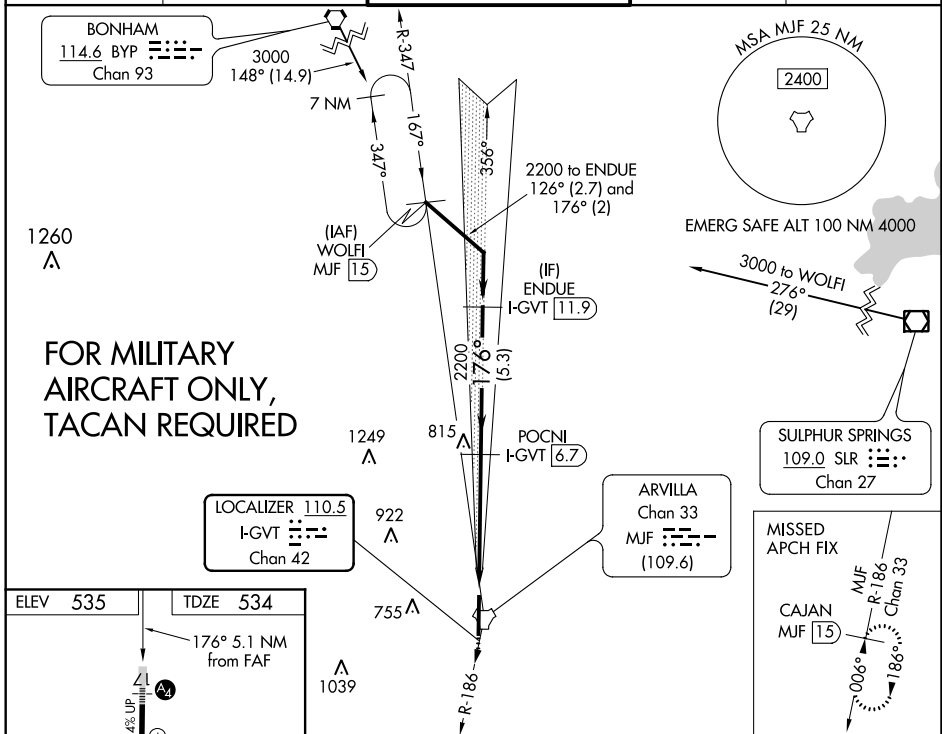
DME required.

**⚠** Inop table does not apply to S-LOC 17 Cats A/B. For inop ALS, increase S-LOC 17 Cats D/E visibility to 1½ SM. Autopilot coupled approach NA below 900 feet.

**MALS**  
**Ⓜ**

**MISSED APPROACH:** Climbing right turn to 3000 on MUF TACAN R-186 to CAJAN/MUF TACAN 1.5 DME and hold.

AWOS-3 <b>133.425</b>	FORT WORTH CENTER <b>132.025 360.75</b>	<b>MAJORS TOWER ★</b> <b>118.65 (CTAF) 0 385.425</b>	GND CON <b>121.7 335.8</b>	UNICOM <b>122.95</b>
--------------------------	--	---	-------------------------------	-------------------------



3000 MUF R-186 CAJAN MUF (1.5)

VGSI and ILS glidepath not coincident (VGSI Angle 3.00/TCH 74).

POCNI I-GVT (6.7) ENDUE I-GVT (11.9)

\* LOC only.

I-GVT (1.6) \* I-GVT (3)

2200 176° 2200

Use I-GVT DME when on localizer course.

GS 3.00° TCH 57

1.5 NM 3.6 NM 5.3 NM

CATEGORY	A	B	C	D	E
S-ILS 17	734-1		200 (200-1)		
S-LOC 17	1060-1	526 (600-1)	1060-1¼ 526 (600-1¼)		
<b>C</b> CIRCLING	1060-1	525 (600-1)	1060-1½ 525 (600-1½)	1240-2¼ 705 (800-2¼)	1300-2¾ 765 (800-2¾)

SC-2, 10 OCT 2019 to 07 NOV 2019

SC-2, 10 OCT 2019 to 07 NOV 2019