

WAAS CH 86205 W17A	APP CRS 176°	Rwy Idg TDZE Apt Elev	8030 534 535
--	------------------------	-----------------------------	---

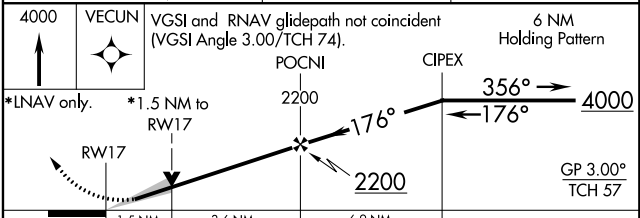
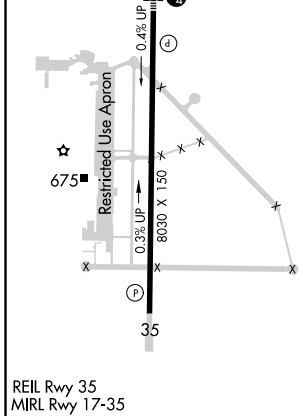
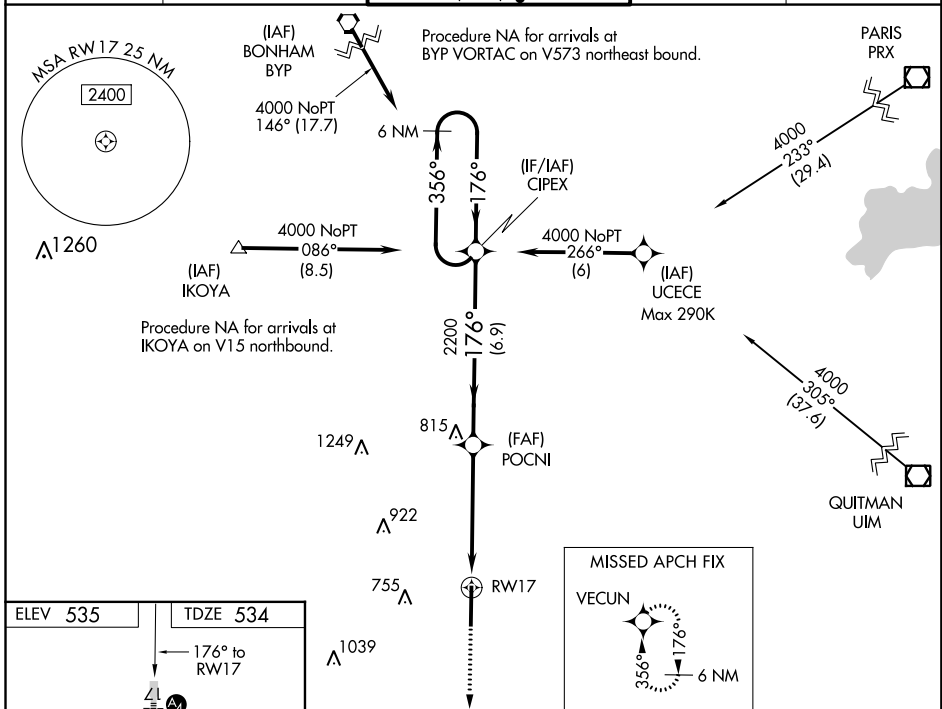
RNAV (GPS) RWY 17

MAJORS (GVT)

⚠ For uncompensated Baro-VNAV systems, LNAV/VNAV NA below -16°C (4°F) or above 54°C (130°F). DME/DME RNP-0.3 NA. VDP and Baro-VNAV NA when using Terrell altimeter setting. When local altimeter setting not received, use Terrell altimeter setting and increase all DA 64 feet and MDA 80 feet, increase LNAV and Circling Cats C/D/E visibility ¼ mile. Inop table does not apply to LNAV/VNAV Cats A/B/C and LNAV Cats A/B. For inop MALS, increase LNAV Cats D/E visibility to 1½ mile. When using Terrell altimeter setting inop table does not apply to LNAV Cats A/B. For inop MALS when using Terrell altimeter setting, increase LNAV/VNAV Cats D/E visibility to 1½ mile and LNAV Cats D/E visibility to 1¾ mile.

MALS
Ⓜ MISSED APPROACH: Climb to 4000 direct VECUN and hold, continue climb-in hold to 4000.

AWOS-3 133.425	FORT WORTH CENTER 132.025 360.75	MAJORS TOWER ★ 118.65 (CTAF) 385.425	GND CON 121.7 335.8	UNICOM 122.95
--------------------------	--	--	-------------------------------	-------------------------



CATEGORY	A	B	C	D	E
LPV DA		734-1	200 (200-1)		
LNAV/VNAV DA		832-1	298 (300-1)		
LNAV MDA	1060-1	526 (600-1)	1060-1½	526 (600-1½)	
C CIRCLING	1060-1	525 (600-1)	1060-1½ 525 (600-1½)	1240-2¼ 705 (800-2¼)	1300-2¾ 765 (800-2¾)