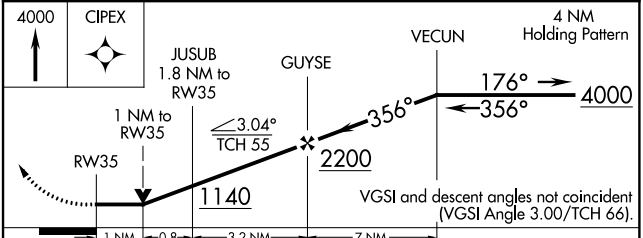
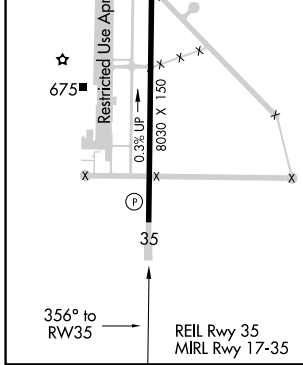
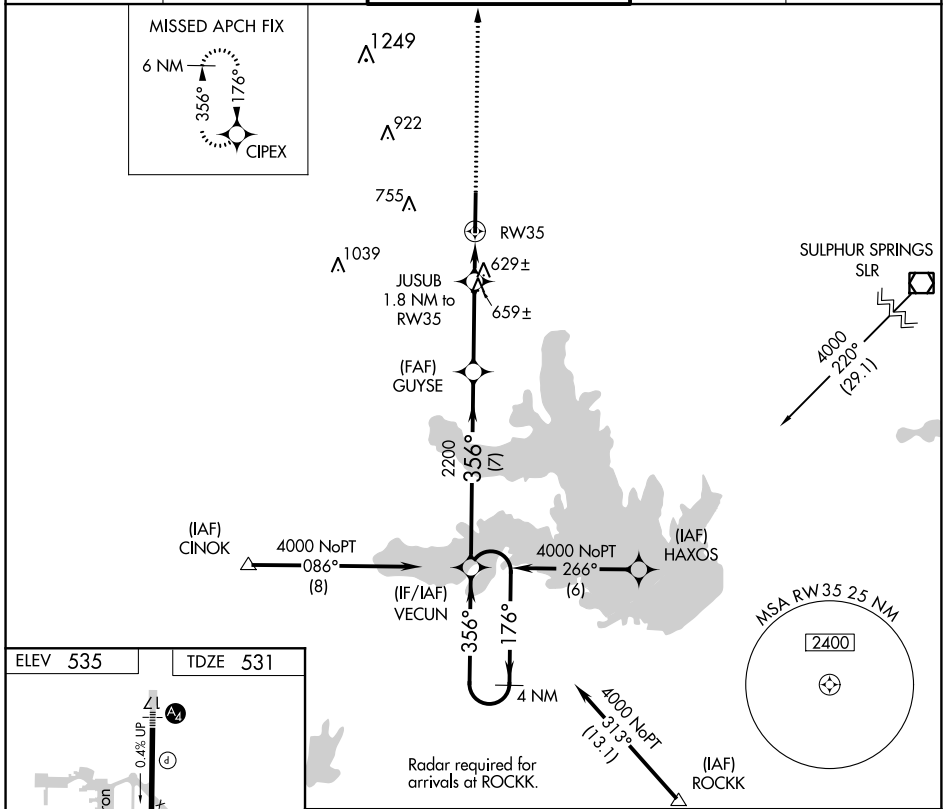


APP CRS <b>356°</b>	Rwy Idg <b>8030</b>
	TDZE <b>531</b>
	Apt Elev <b>535</b>

# RNAV (GPS) RWY 35

MAJORS (GVT)

<p><b>⚠</b> DME/DME RNP-0.3 NA. Visibility reduction by helicopters NA. VDP NA when using Terrell altimeter setting. When local altimeter setting not received, use Terrell altimeter setting and increase all MDA 80 feet and increase LNAV Cat C, D, and E visibility ¼ mile and circling Cat E visibility ¼ mile.</p>		<p><b>⚠</b> MISSED APPROACH: Climb to 4000 direct CIPEX and hold, continue climb-in-hold to 4000.</p>		
AWOS-3 <b>133.425</b>	FORT WORTH CENTER <b>132.025 360.75</b>	MAJORS TOWER ★ <b>118.65 (CTAF) 0 385.425</b>	GND CON <b>121.7 335.8</b>	UNICOM <b>122.95</b>



CATEGORY	A	B	C	D	E
LNAV MDA	900-1 369 (400-1)		900-1¼ 369 (400-1¼)		
CIRCLING	1040-1	505 (600-1)	1040-1½ 505 (600-1½)	1100-2 565 (600-2)	1280-2¾ 745 (800-2¾)

SC-2, 10 OCT 2019 to 07 NOV 2019

SC-2, 10 OCT 2019 to 07 NOV 2019