

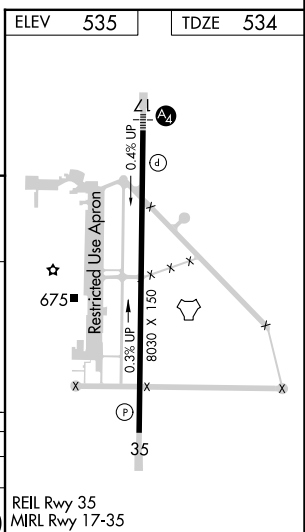
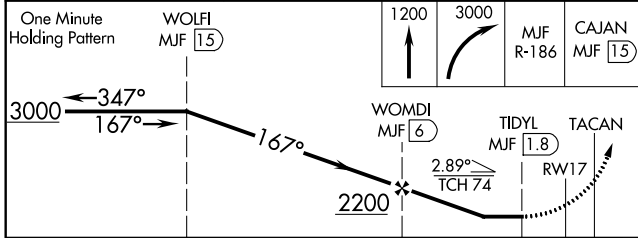
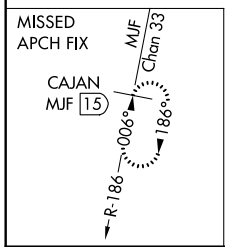
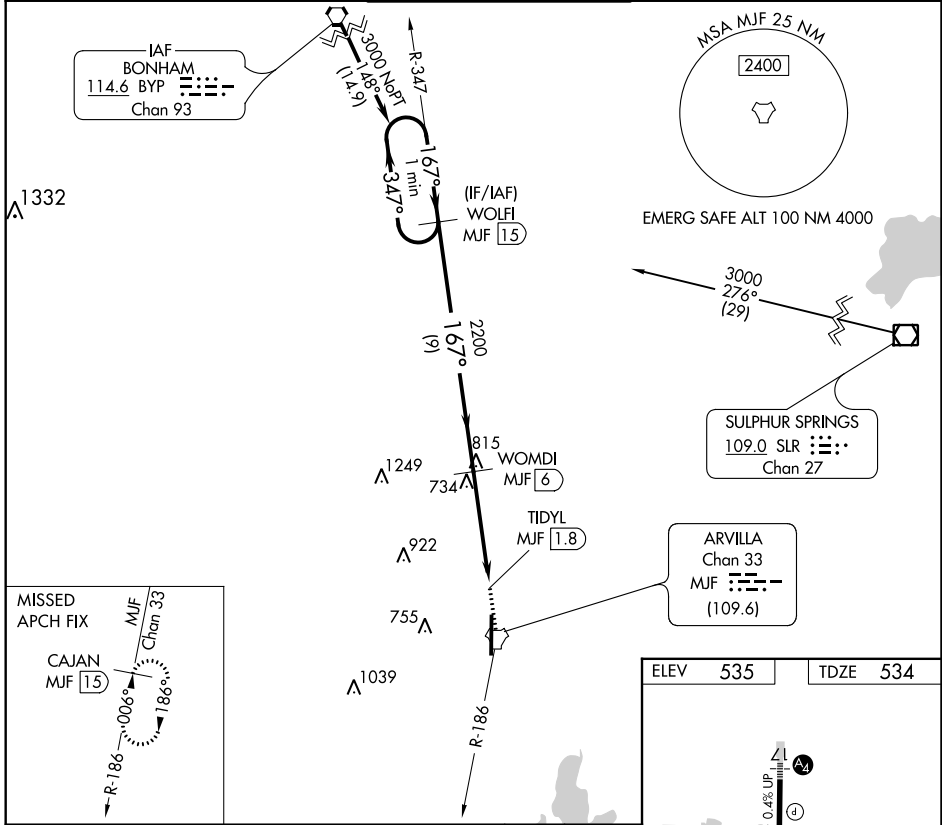
TACAN MJF Chan 33	APP CRS 167°	Rwy Idg TDZE Apt Elev	8030 534 535
-----------------------------	------------------------	-----------------------------	-----------------------------------------

TACAN RWY 17

MAJORS (GVT)

<p>▼ Visibility reduction by helicopters NA. When local altimeter setting not received, use Terrell altimeter setting; increase all MDA 80 feet, increase S-17 Cats C/D/E and Circling Cats C/E visibility ¼ mile. For inoperative MALSR, increase S-17 Cat E visibility ¼ mile.</p>	MALS	MISSED APPROACH: Climb to 1200 then climbing right turn to 3000 on MJF TACAN R-186 to CAJAN/MJF 15 DME and hold.

AWOS-3 133.425	FORT WORTH CENTER 132.025 360.75	MAJORS TOWER ★ 118.65 (CTAF) 0 385.425	GND CON 121.7 335.8	UNICOM 122.95
--------------------------	--------------------------------------------	--------------------------------------------------	-------------------------------	-------------------------



CATEGORY	A	B	C	D	E
S-17	1060-1	526 (600-1)	1060-1¼ 526 (600-1¼)		
CIRCLING	1060-1¼	525 (600-1¼)	1060-1½ 525 (600-1½)	1100-2 565 (600-2)	1280-2¾ 745 (800-2¾)

SC-2, 10 OCT 2019 to 07 NOV 2019

SC-2, 10 OCT 2019 to 07 NOV 2019