

TACAN MUF Chan <b>33</b>	APP CRS <b>006°</b>	Rwy Idg TDZE Apt Elev	<b>8030</b> <b>532</b> <b>535</b>
-----------------------------	------------------------	-----------------------------	---

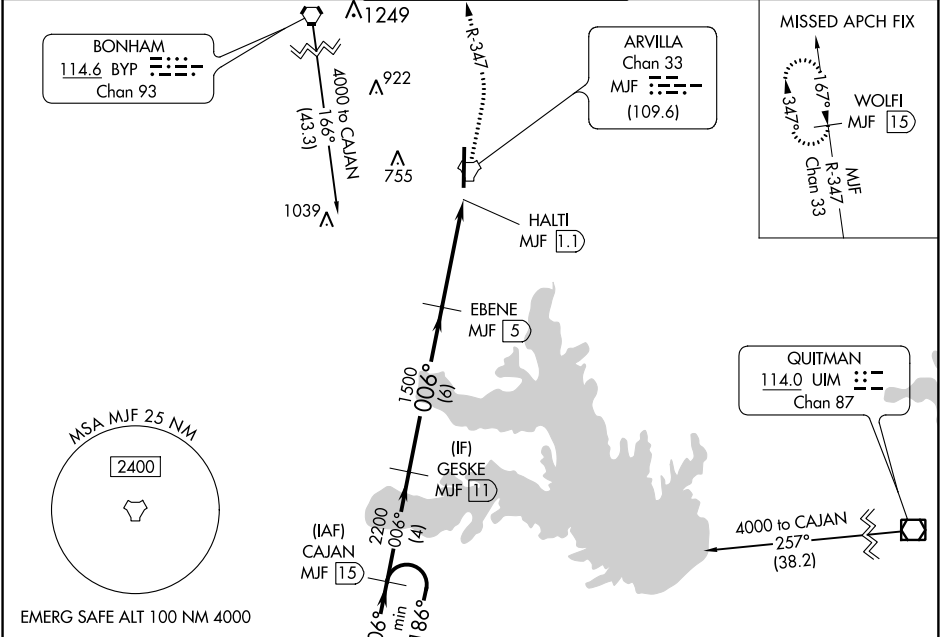
# TACAN RWY 35

MAJORS (GVT)

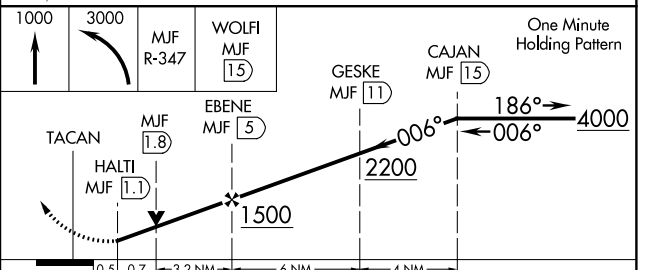
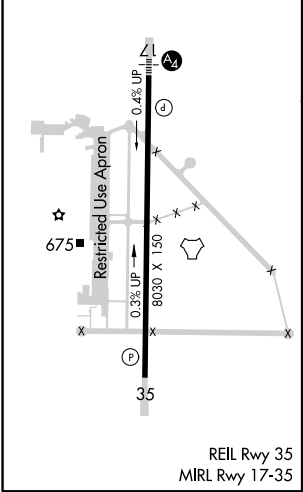
**Visibility reduction by helicopters NA. When local altimeter setting not received, use Terrell altimeter setting and increase all MDA 80 feet and increase S-35 Cats C, D, and E visibility 1/8 mile, increase Circling Cat E visibility 1/4 mile.**

**MISSED APPROACH:** Climb to 1000 then climbing left turn to 3000 on MUF TACAN R-347 to WOLFI/MUF 15 DME and hold.

AWOS-3 <b>133.425</b>	FORT WORTH CENTER <b>132.025 360.75</b>	MAJORS TOWER ★ <b>118.65 (CTAF) 0 385.425</b>	GND CON <b>121.7 335.8</b>	UNICOM <b>122.95</b>
--------------------------	--	--	-------------------------------	-------------------------



ELEV 535	TDZE 532
----------	----------



CATEGORY	A	B	C	D	E
S-35	980-1	448 (500-1)	980-1 3/8	448 (500-1 3/8)	
CIRCLING	1040-1	505 (600-1)	1040-1 1/2 505 (600-1 1/2)	1100-2 565 (600-2)	1280-2 3/4 745 (800-2 3/4)

SC-2, 10 OCT 2019 to 07 NOV 2019

SC-2, 10 OCT 2019 to 07 NOV 2019