

# RNAV (GPS) RWY 14L

CRYSTAL (MIC)

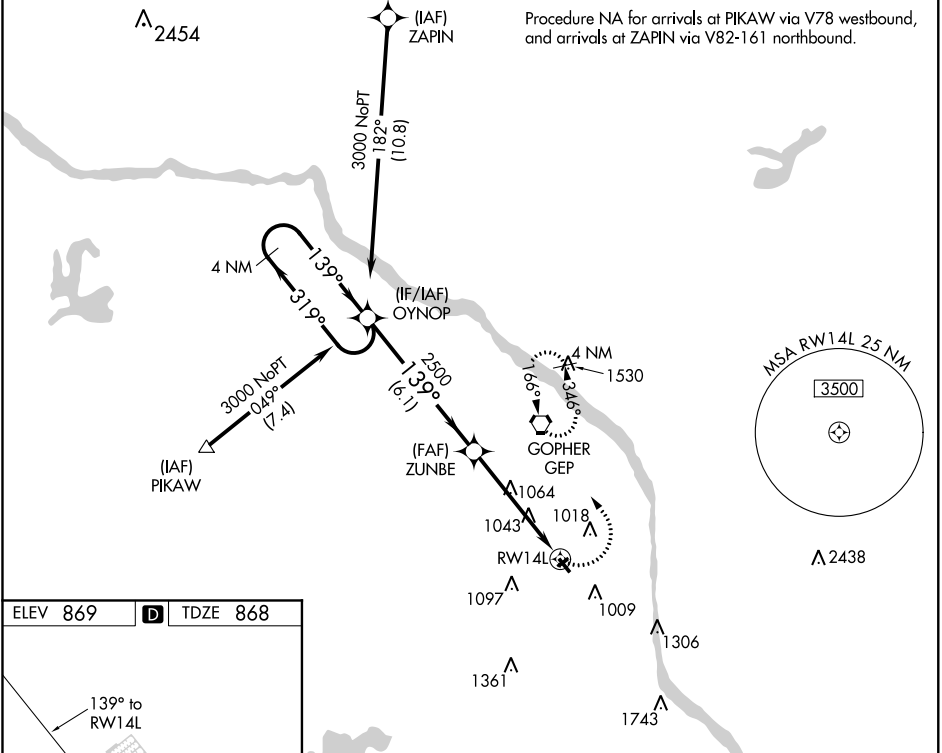
APP CRS	Rwy Idg	<b>3268</b>
<b>139°</b>	TDZE	<b>868</b>
	Apt Elev	<b>869</b>

RNP APCH:

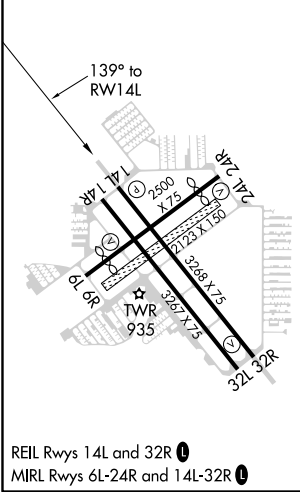
**⚠** When local altimeter setting not received, use Anoka County-Blaine (Janes Field) altimeter setting and increase all MDAs 40 feet and increase visibility Cat C ½ SM. Rwy 14L helicopter visibility reduction below ¾ SM NA. Circling NA to Rwys 6R and 24L. VDP NA when using Anoka County-Blaine (Janes Field) altimeter setting

**MISSED APPROACH:**  
Climbing left turn to 2700 direct GEP VORTAC and hold.

ATIS <b>124.475</b>	MINNEAPOLIS APP CON <b>126.5 335.65</b>	CRYSTAL TOWER * <b>120.7 (CTAF) 0</b>	GND CON <b>121.6</b>	CLNC DEL <b>121.6</b>	MINNEAPOLIS CLNC DEL <b>121.6</b> (When tower closed)	UNICOM <b>122.95</b>
------------------------	--	--	-------------------------	--------------------------	---	-------------------------



ELEV 869	<b>D</b>	TDZE 868
----------	----------	----------



4 NM Holding Pattern		VGSi and descent angles not coincident (VGSi Angle 4.00/TCH 30).		2700	GEP
3000 ← 319°		→ 139°		↙ 2700	
OYNOP		ZUNBE		↘ 2500	
← 6.1 NM		← 3.8 NM		↘ 1.1 NM to RWY 14L	
CATEGORY	A	B	C	D	
LNAV MDA	1380-1	512 (600-1)	1380-1½ 512 (600-1½)	1380-1¾ 512 (600-1¾)	
CIRCLING	1380-1	511 (600-1)	1380-1½ 511 (600-1½)	1460-2 591 (600-2)	

NC-1, 10 OCT 2019 to 07 NOV 2019

NC-1, 10 OCT 2019 to 07 NOV 2019