

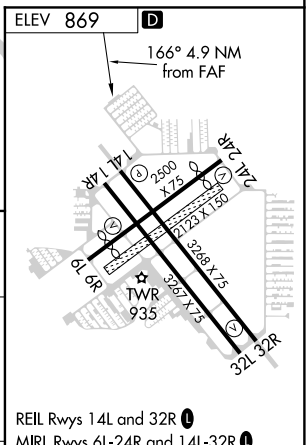
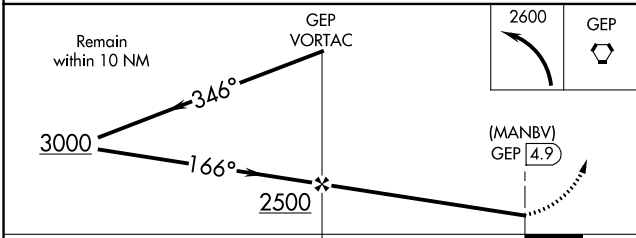
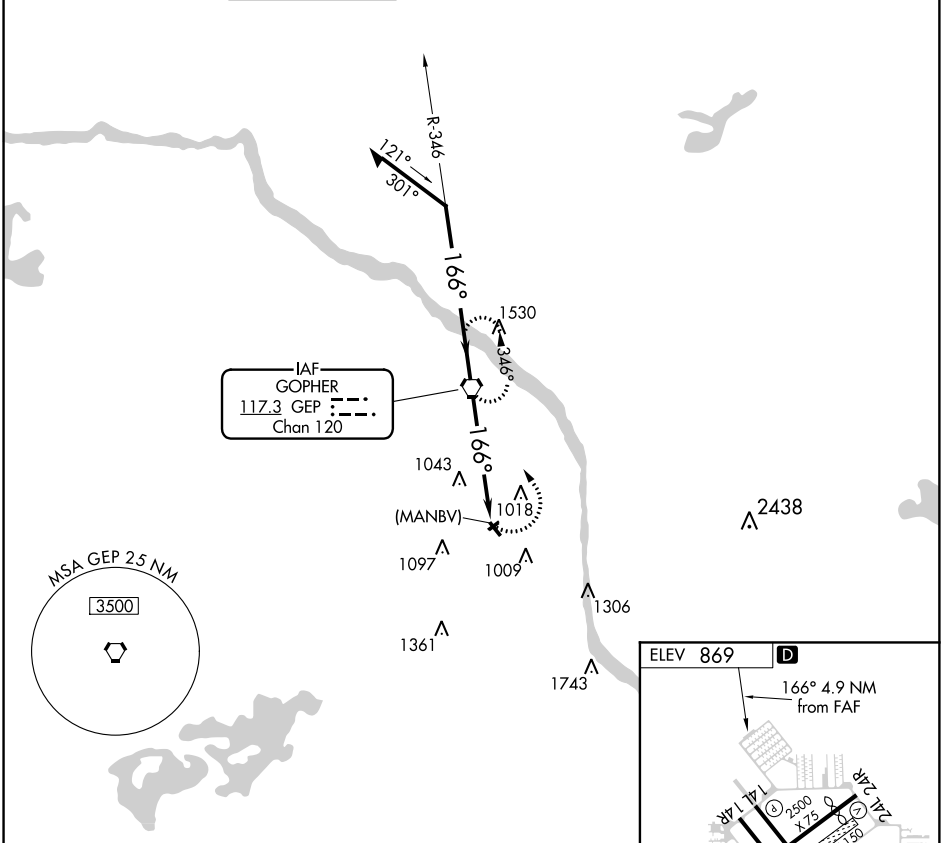
VORTAC GEP 117.3 Chan 120	APP CRS 166°	Rwy Idg TDZE Apt Elev N/A N/A 869
---	------------------------	---

VOR or GPS-A CRYSTAL (MIC)

▼ Circling NA to Rwy's 6R and 24L.
When local altimeter setting not received, use Anoka County-Blaine (Janes Field) altimeter setting and increase all MDA's 40 feet.

MISSED APPROACH: Climbing left turn to 2600 direct GEP VORTAC and hold.

ATIS 124.475	MINNEAPOLIS APP CON 126.5 335.65	CRYSTAL TOWER * 120.7 (CTAF) ①	GND CON 121.6	CLNC DEL 121.6	MINNEAPOLIS CLNC DEL 121.6 (When tower closed)	UNICOM 122.95
------------------------	--	---	-------------------------	--------------------------	---	-------------------------



CATEGORY	A	B	C	D	FAF to MAP 4.9 NM					
CIRCLING	1360-1	491 (500-1)	1360-1½ 491 (500-1½)	1460-2 591 (600-2)	Knots	60	90	120	150	180
					Min:Sec	4:54	3:16	2:27	1:58	1:38

NC-1, 10 OCT 2019 to 07 NOV 2019

NC-1, 10 OCT 2019 to 07 NOV 2019