

VORTAC RZC 116.4 Chan 111	APP CRS 356°	Rwy Idg TDZE Apt Elev	5302 1353 1353
--	------------------------	-----------------------------	---

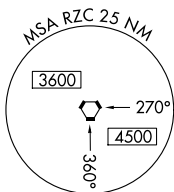
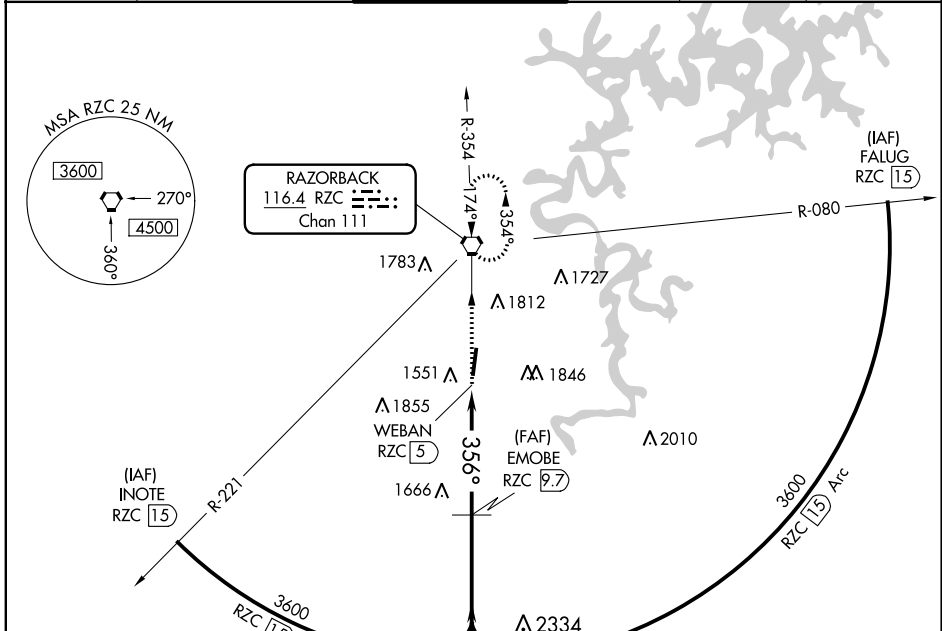
VOR/DME RWY 36

SPRINGDALE MUNI (ASG)

⚠ Circling NA east of Rwy 18-36. When local altimeter setting not received, use Fayetteville/Drake Field altimeter setting and increase all MDA 40 feet; increase visibility S-36 Cat C/D ½ mile and Circling Cat C/D ¼ mile. Helicopter visibility reduction below ¾ SM NA.

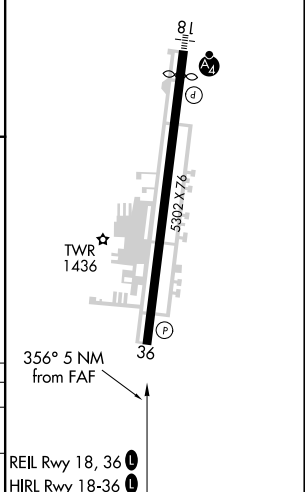
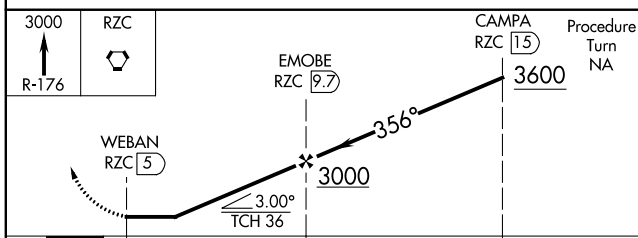
MISSED APPROACH: Climb to 3000 via R-176 to RZC VORTAC and hold.

AWOS-3 124.675	RAZORBACK APP CON* 126.6 305.2	SPRINGDALE TOWER* 118.2 (CTAF) 0	GND CON 121.6	REIL 18, 36 122.8 0	UNICOM 122.95
--------------------------	--	---	-------------------------	--------------------------------------	-------------------------



RAZORBACK
 116.4 RZC
 Chan 111

ELEV 1353	TDZE 1353
-----------	-----------



CATEGORY	A	B	C	D
S-36	1980-1	627 (700-1)	1980-1¾	627 (700-1¾)
C CIRCLING	1980-1	2000-1	2020-1¾	2220-2¾
	627 (700-1)	647 (700-1)	667 (700-1¾)	867 (700-2¾)

SC-1, 10 OCT 2019 to 07 NOV 2019

SC-1, 10 OCT 2019 to 07 NOV 2019