


LOC I-TIW 109.1	APP CRS 167°	Rwy Idg 5002
		TDZE 294
		Apt Elev 295

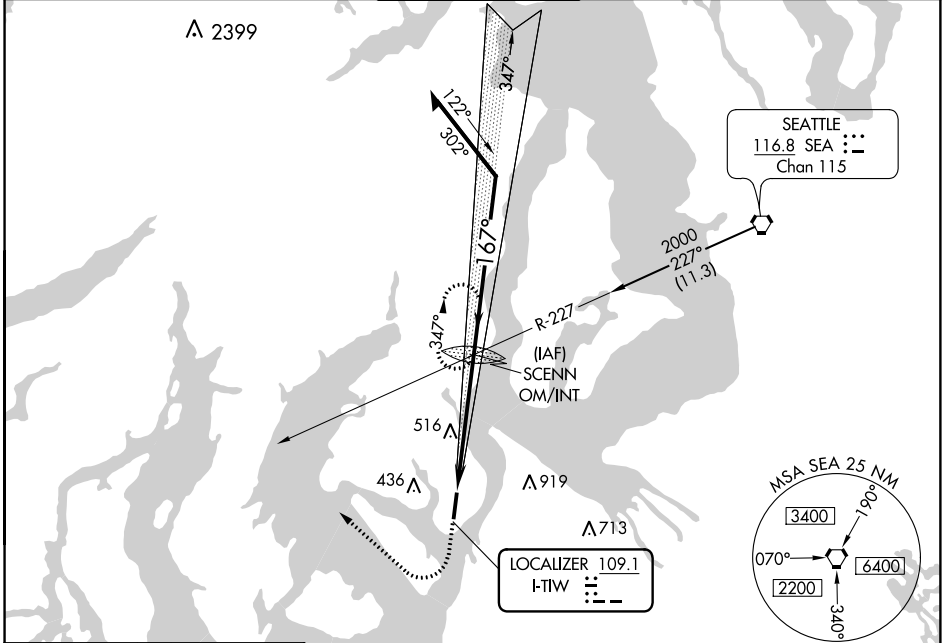
ILS or LOC RWY 17

TACOMA NARROWS (TIW)

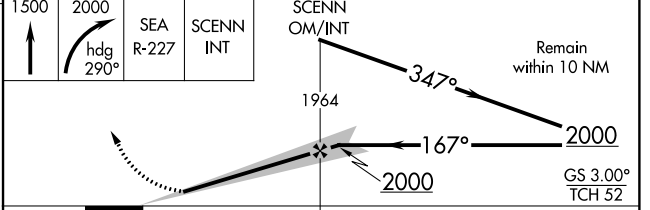
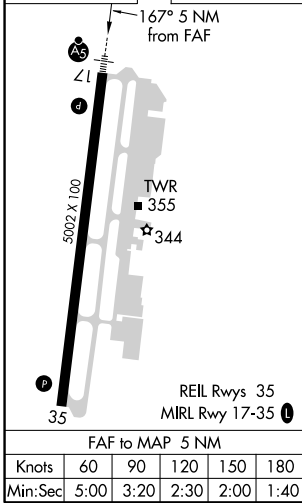
⚠ When control tower closed, obtain local altimeter setting on UNICOM, when not received, use McChord Field altimeter setting minimums. Circling not authorized east of Rwy 17-35.

MALSRS  MISSED APPROACH: Climb to 1500, then climbing right turn to 2000 via heading 290° and SEA VORTAC R-227 to SCENN INT and hold.

ATIS 124.05	SEATTLE APP CON 120.1 290.9	TACOMA TOWER* 118.5 (CTAF) 0 253.5	GND CON 121.8	UNICOM 122.95
-----------------------	---------------------------------------	--	-------------------------	-------------------------



ELEV 295	TDZE 294
----------	----------



CATEGORY	A	B	C	D
S-ILS 17	494-½ 200 (200-½)			
S-LOC 17	760-½	466 (500-½)	466 (500-¾)	466 (500-1)
CIRCLING	760-1	465 (500-1)	760-1½	860-2
McCHORD FIELD ALTIMETER SETTING MINIMUMS				
S-ILS 17	519-½ 225 (300-½)			
S-LOC 17	780-½	486 (500-½)	780-¾	486 (500-1)
CIRCLING	780-1	485 (500-1)	780-1½	860-2

NW-1, 10 OCT 2019 to 07 NOV 2019

NW-1, 10 OCT 2019 to 07 NOV 2019