

WAAS CH <b>82608</b> <b>W17A</b>	APP CRS <b>167°</b>	Rwy Idg TDZE Apt Elev	<b>5002</b> <b>294</b> <b>295</b>
--	------------------------	-----------------------------	---

# RNAV (GPS) RWY 17

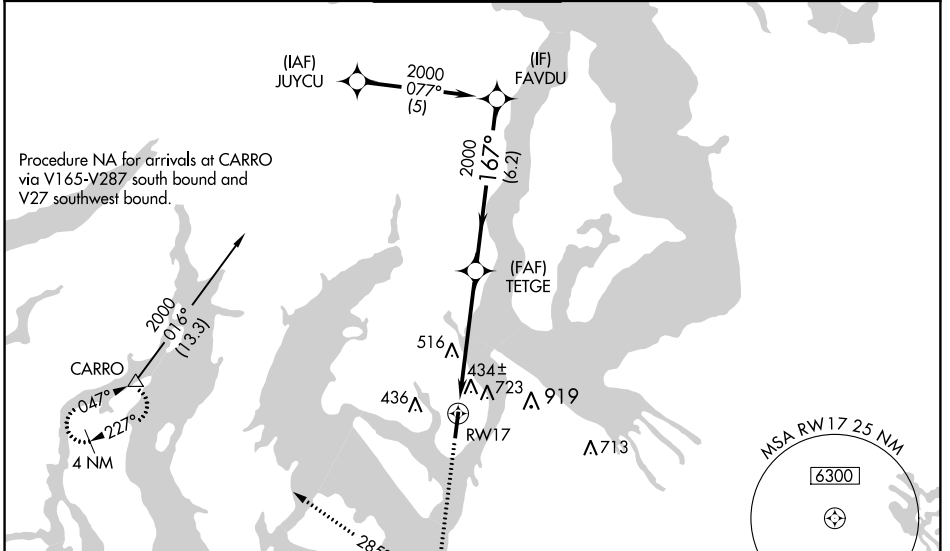
TACOMA NARROWS (TIW)

**▽** VDP NA with McChord Field altimeter setting. For inoperative MALSRS, increase LPV all Cats visibility to 1½ mile. Circling NA east of Rwy 17/35.  
**▲** Baro-VNAV NA when using McChord Field altimeter setting. For uncompensated Baro-VNAV systems, LNAV/VNAV NA below -15°C (5°F) or above 48°C (118°F). DME/DME RNP-0.3 NA. When local altimeter setting not received, use McChord Field altimeter setting and increase all DA 25 feet, all MDA 40 feet, and increase LPV all Cats visibility ½ mile.



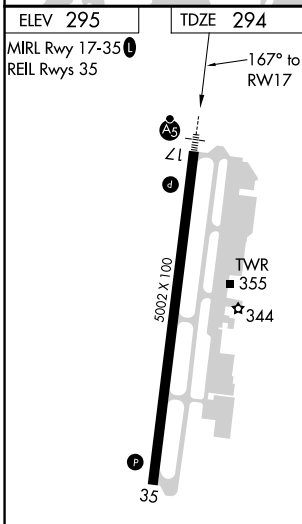
**MALSRS**  
**MISSED APPROACH:** Climb to 4000 direct WAPGI and right turn via 285° track to CARRO and hold, continue climb-in-hold to 4000.

ATIS <b>124.05</b>	SEATTLE APP CON <b>120.1 290.9</b>	<b>TACOMA TOWER ★</b> <b>118.5 (CTAF) 0 253.5</b>	GND CON <b>121.8</b>	UNICOM <b>122.95</b>
-----------------------	---------------------------------------	--	-------------------------	-------------------------



NW-1, 10 OCT 2019 to 07 NOV 2019

NW-1, 10 OCT 2019 to 07 NOV 2019



ELEV 295	TDZE 294	MIRL Rwy 17-35 REIL Rwy 35		4000 WAPGI CARRO		TETGE FAVDU		Procedure Turn NA
167° to RWY 17		*2 NM to RWY 17		*LNAV only.		2000		GP 3.00° TCH 52
2 NM		3.1 NM		6.2 NM		285° tr		
CATEGORY	A	B	C	D				
LPV DA		638-5/8	344 (400-5/8)					
LNAV/VNAV DA		992-2	698 (700-2)					
LNAV MDA	980-1/2	686 (700-1/2)	980-1 1/2	686 (700-1 1/2)				
CIRCLING	980-1	685 (700-1)	980-2	685 (700-2)	980-2 1/4	685 (700-2 1/4)		