

WAAS CH 50312 W35A	APP CRS 347°	Rwy ldg 5002 TDZE 295 Apt Elev 295
--	------------------------	---

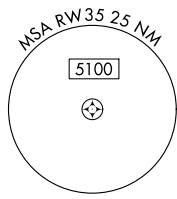
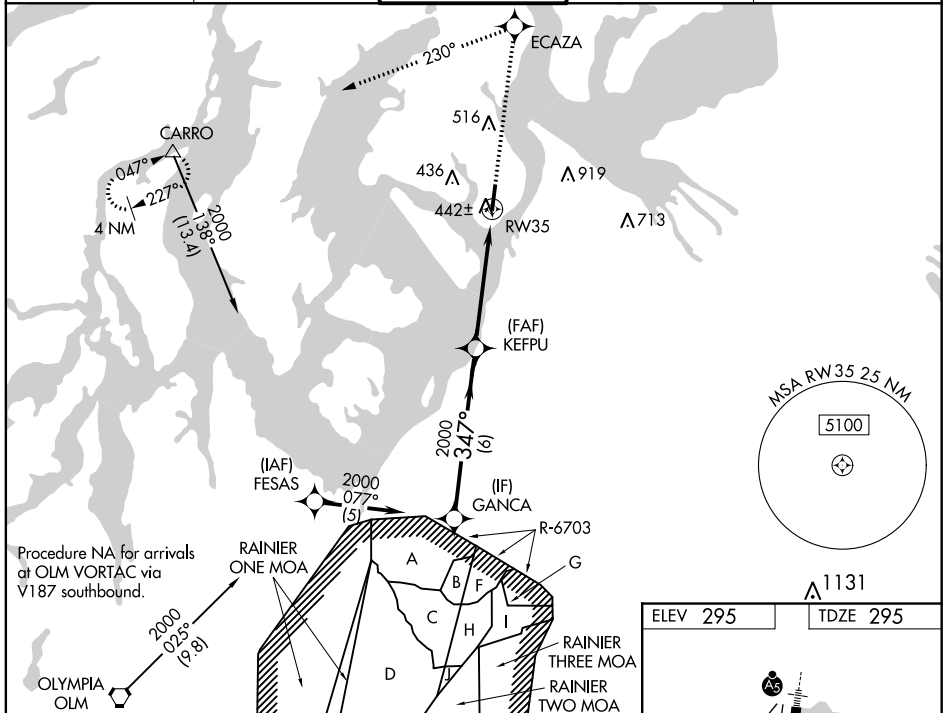
RNAV (GPS) RWY 35

TACOMA NARROWS (TIW)

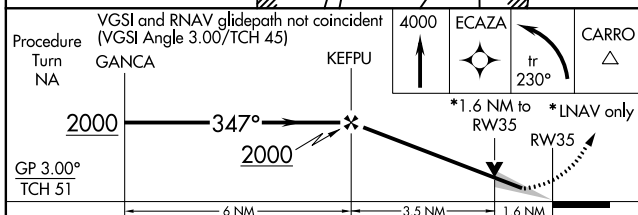
⚠ Baro-VNAV NA when using McCord Field altimeter setting. For uncompensated Baro-VNAV systems, LNAV/VNAV NA below -1.5°C (5°F) or above 48°C (118°F). DME/DME RNP-0.3 NA. Circling NA east of Rwy 17-35. When local altimeter setting not received, use McCord Field altimeter setting and increase all DA 25 feet and all MDA 40 feet.

MISSED APPROACH: Climb to 4000 direct ECAZA and left turn via 230° track to CARRO and hold, continue climb-in-hold to 4000.

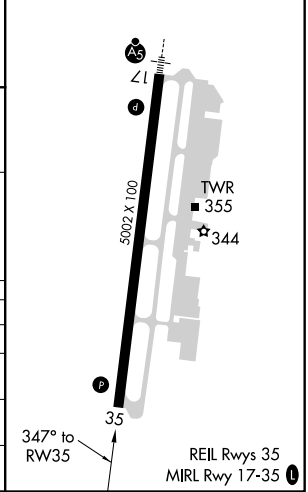
ATIS 124.05	SEATTLE APP CON 120.1 290.9	TACOMA TOWER * 118.5 (CTAF) 0 253.5	GND CON 121.8	UNICOM 122.95
-----------------------	---------------------------------------	--	-------------------------	-------------------------



ELEV 295	TDZE 295
----------	----------



CATEGORY	A	B	C	D
LPV DA	561-7/8 266 (300-7/8)			
LNAV/VNAV DA	769-1 3/4 474 (500-1 3/4)			
LNAV MDA	840-1 545 (600-1)	840-1 1/2 545 (600-1 1/2)	840-1 3/4 545 (600-1 3/4)	
CIRCLING	980-1 685 (700-1)	980-2 685 (700-2)	980-2 1/4 685 (700-2 1/4)	



NW-1, 10 OCT 2019 to 07 NOV 2019

NW-1, 10 OCT 2019 to 07 NOV 2019