


LOC/DME I-GFK 109.1 Chan 28	APP CRS 354°	Rwy Idg TDZE Apt Elev	7351 845 845
------------------------------------------	------------------------	-----------------------------	-----------------------------------------

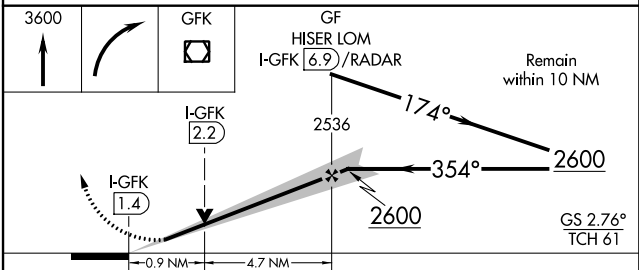
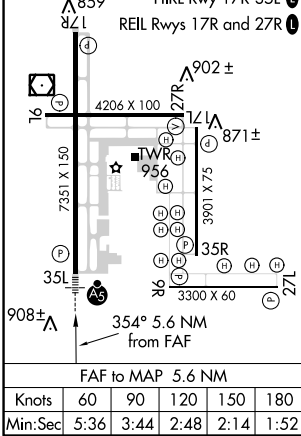
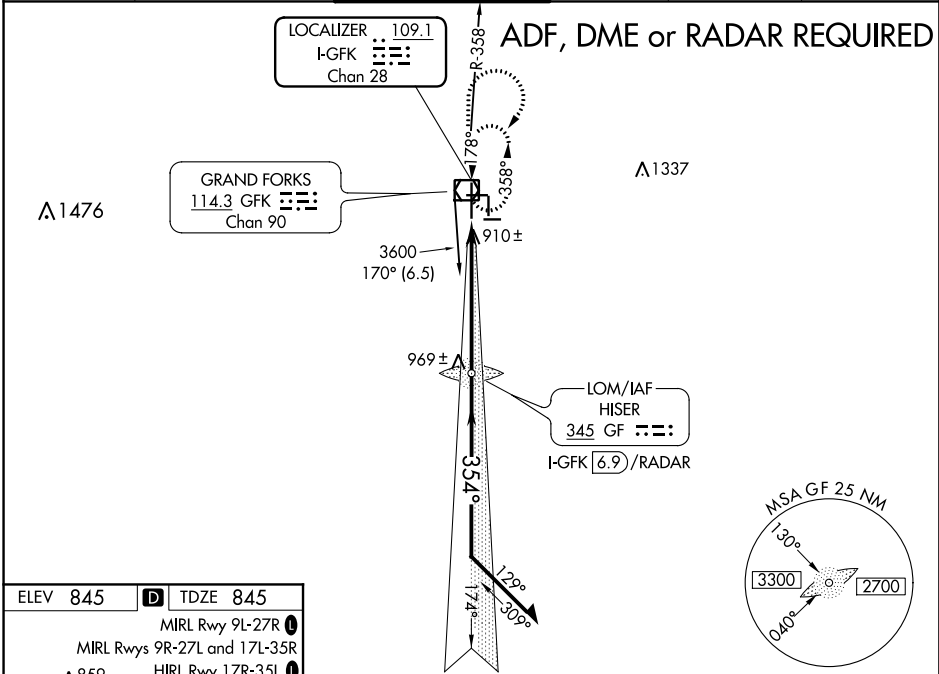
ILS or LOC RWY 35L

GRAND FORKS INTL (GFK)

⚠ When local altimeter setting not received, use Crookston altimeter setting and increase all DA/MDA 80 feet; increase S-LOC 35L Cats C/D/E visibility 1/8 mile, and Circling Cat E visibility 1/4 mile. Procedure turn NA for Cat E aircraft, RADAR required. VDP NA with Crookston altimeter setting. For inop MALSRS, increase S-ILS 35L Cat E visibility to RVR 4000 and S-LOC 35L Cats C/D/E visibility to RVR 4500. For inop MALSRS when using Crookston altimeter setting, increase S-ILS 35L all Cats visibility to RVR 4500 and S-LOC 35L Cat E visibility to RVR 6000.

MALSRS

MISSED APPROACH:
 Climb to 3600 then right turn direct GFK VOR/DME and hold.

ATIS 119.4	GRAND FORKS APP CON 118.1 318.1	GRAND FORKS TOWER* 118.4(CTAF) 350.35	GND CON 124.575	CLNC DEL 135.725	UNICOM 122.95
----------------------	-------------------------------------------	-------------------------------------------------	---------------------------	----------------------------	-------------------------



CATEGORY	A	B	C	D	E
S-ILS 35L	1045/24 200 (200-1/2)				
S-LOC 35L	1180/24	335 (400-1/2)	1180/26	335 (400-1/2)	
CIRCLING	1280-1 435 (500-1)	1300-1 455 (500-1)	1300-1 1/2 455 (500-1 1/2)	1400-2 555 (600-2)	1520-2 1/2 675 (700-2 1/2)

NC-1, 10 OCT 2019 to 07 NOV 2019

NC-1, 10 OCT 2019 to 07 NOV 2019