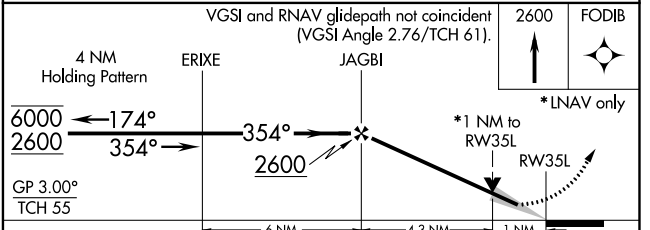
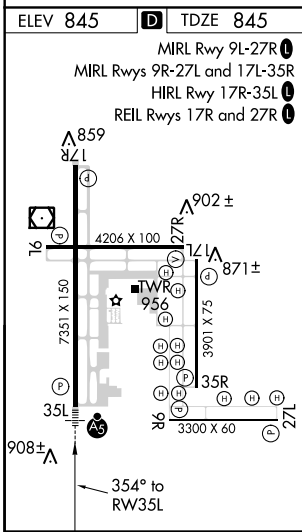
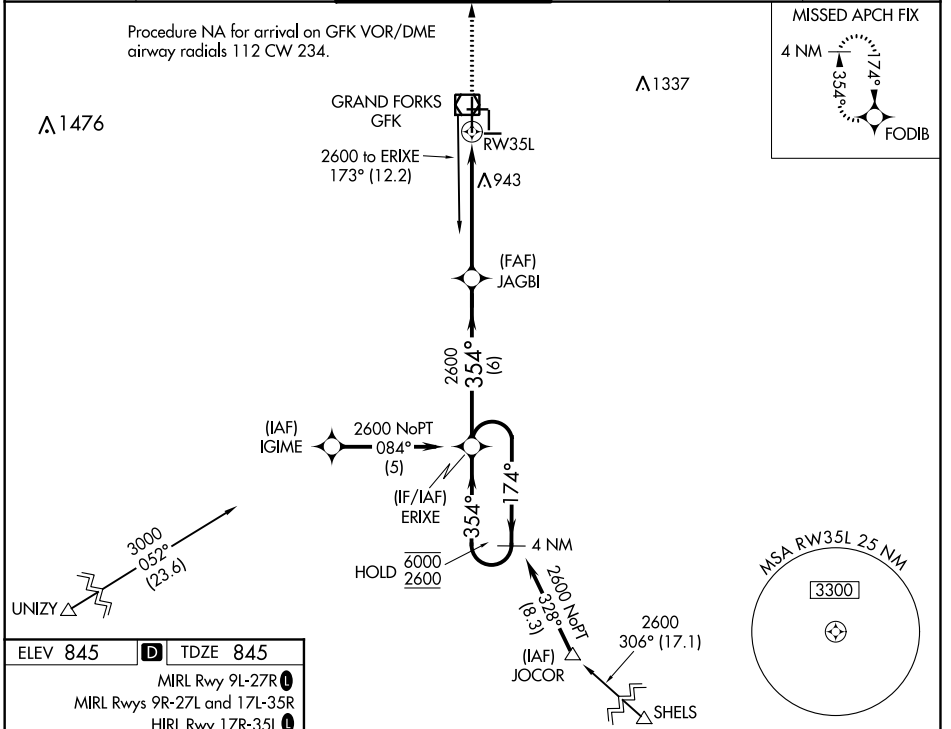


WAAS CH <b>70313</b> <b>W35A</b>	APP CRS <b>354°</b>	Rwy Idg TDZE Apt Elev	<b>7351</b> <b>845</b> <b>845</b>
--	------------------------	-----------------------------	---

# RNAV (GPS) RWY 35L

GRAND FORKS INTL (GFK)

RNP APCH.		MALSR		MISSED APPROACH: Climb to 2600 direct FODIB and hold.	
<p>▼ Inop table does not apply to LNAV Cat D. For uncompensated Baro-VNAV systems, LNAV/VNAV NA below -16°C or above 54°C.</p>					
ATIS <b>119.4</b>	GRAND FORKS APP CON <b>118.1 318.1</b>	GRAND FORKS TOWER★ <b>118.4(CTAF) 350.35</b>	GND CON <b>124.575</b>	CLNC DEL <b>135.725</b>	UNICOM <b>122.95</b>



CATEGORY	A	B	C	D
LPV DA	1095/24 250 (300-½)			
LNAV/VNAV DA	1174/26 329 (400-½)			1174/40 329 (400-¾)
LNAV MDA	1200/24	355 (400-½)	1200/30 355 (400-¾)	1200/50 355 (400-1)
CIRCLING	1280-1 435 (500-1)	1300-1 455 (500-1)	1300-1½ 455 (500-1½)	1400-2 555 (600-2)

NC-1, 10 OCT 2019 to 07 NOV 2019

NC-1, 10 OCT 2019 to 07 NOV 2019