

VOR/DME GFK 114.3 Chan 90	APP CRS 183°	Rwy Idg TDZE 843 Apt Elev 845	7351
---	------------------------	---	-------------

VOR RWY 17R

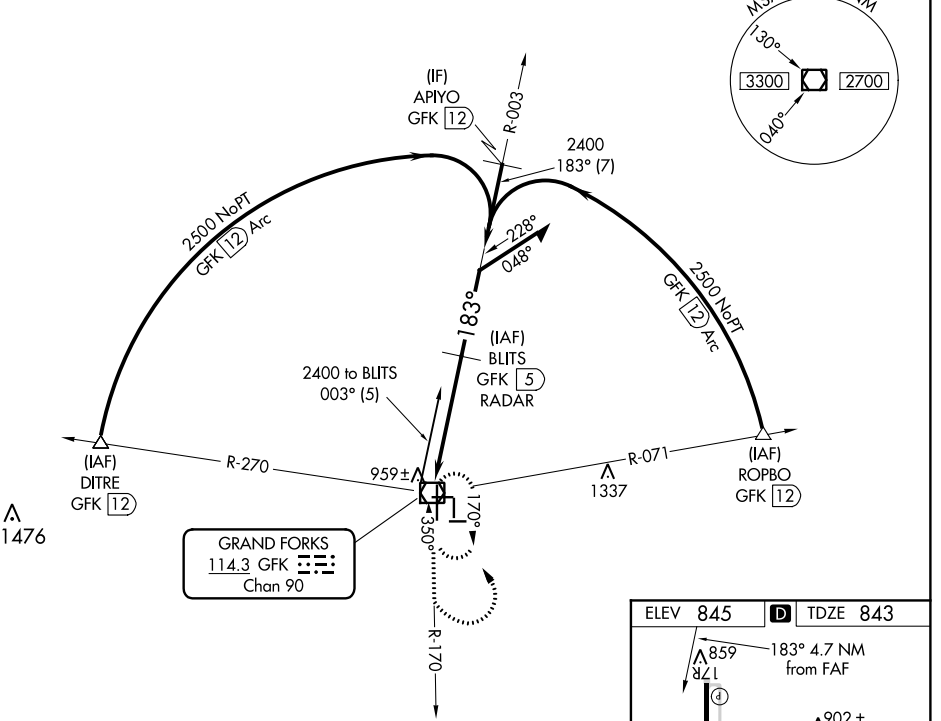
GRAND FORKS INTL (GFK)

⚠ If local altimeter setting not received, use Crookston altimeter setting and increase all MDAs 80 feet.
⚠ VDP NA with Crookston altimeter setting.

MISSED APPROACH: Climb to 3600 via GFK R-170 then left turn direct GFK VOR/DME and hold.

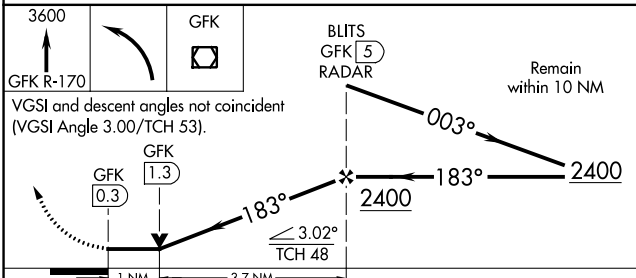
ATIS 119.4	GRAND FORKS APP CON 118.1 318.1	GRAND FORKS TOWER* 118.4(CTAF) 350.35	GND CON 124.575	CLNC DEL 135.725	UNICOM 122.95
----------------------	---	---	---------------------------	----------------------------	-------------------------

DME or RADAR REQUIRED



NC-1, 10 OCT 2019 to 07 NOV 2019

NC-1, 10 OCT 2019 to 07 NOV 2019



ELEV 845	D TDZE 843
-----------------	--------------------------

Knots	60	90	120	150	180
Min:Sec	4:42	3:08	2:21	1:53	1:34

CATEGORY	A	B	C	D
S-17R	1220-1	377 (400-1)		1220-1 1/4 377 (400-1 1/4)
CIRCLING	1280-1 435 (500-1)	1300-1 455 (500-1)	1300-1 1/2 455 (500-1 1/2)	1400-2 555 (600-2)