

COULT SEVEN DEPARTURE

61.0Z AON Z 01 07 OCT 2019 11:01:11-CN

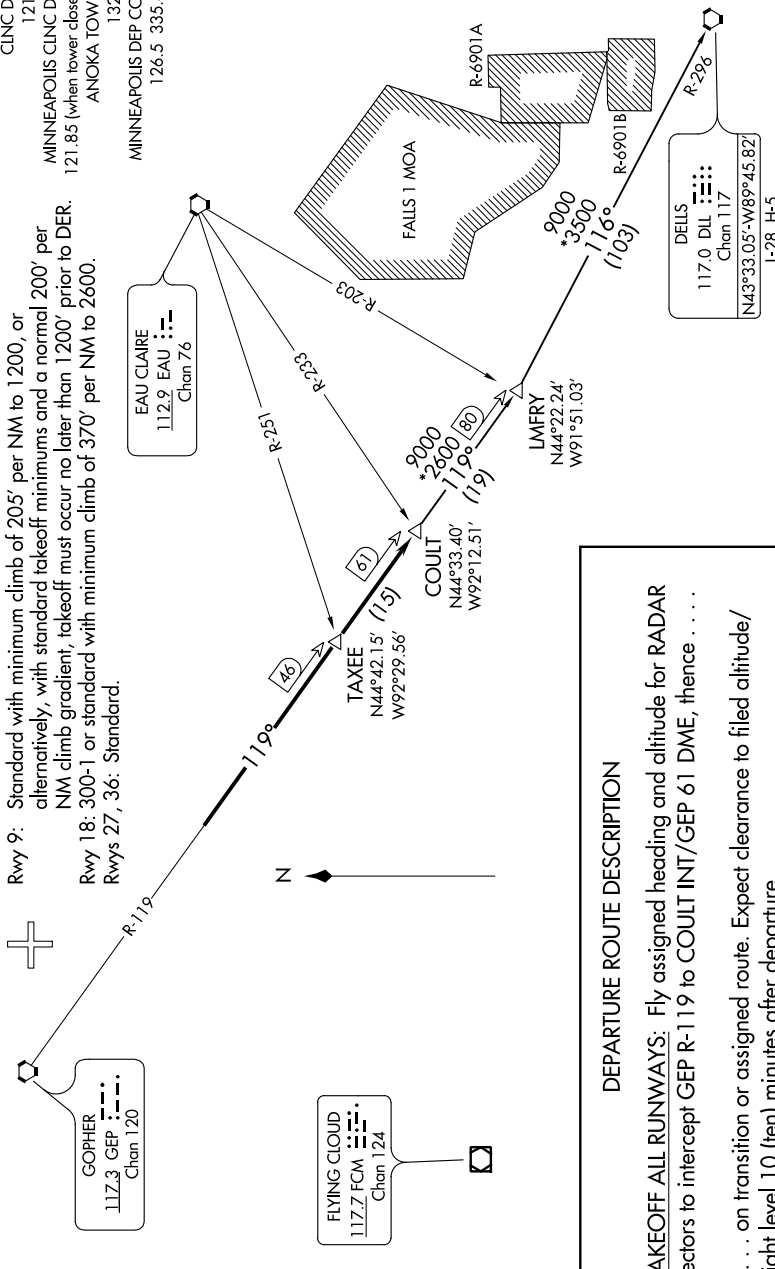
TAKEOFF MINIMUMS

Rwy 9: Standard with minimum climb of 205' per NM to 1200, or alternatively, with standard takeoff minimums and a normal 200' per NM climb gradient; takeoff must occur no later than 1200' prior to DER.

Rwy 18: 300-1 or standard with minimum climb of 370' per NM to 2600.

Rwys 27, 36: Standard.

ATIS 120.625
 CLNC DEL 121.3
 MINNEAPOLIS CLNC DEL 121.85 (when tower closed)
 ANOKA TOWER * 132.4
 MINNEAPOLIS DEP CON 126.5 335.65



DEPARTURE ROUTE DESCRIPTION

TAKEOFF ALL RUNWAYS: Fly assigned heading and altitude for RADAR vectors to intercept GEP R-119 to COULT INT/GEF 61 DME, then

. . . . on transition or assigned route. Expect clearance to filed altitude/flight level 10 (ten) minutes after departure.

DELLS TRANSITION (COULT7.DLL): From over COULT INT on GEP R-119 to LMFRY INT, then on DLL R-296 to DLL DME.

NOTE: RADAR required.
 NOTE: Chart not to scale.

COULT SEVEN DEPARTURE

NC-1, 10 OCT 2019 to 07 NOV 2019