

LOC/DME I-ANE 111.15 Chan 48 (Y)	APP CRS 269°	Rwy Idg TDZE Apt Elev	5000 910 912
---	------------------------	-----------------------------	---

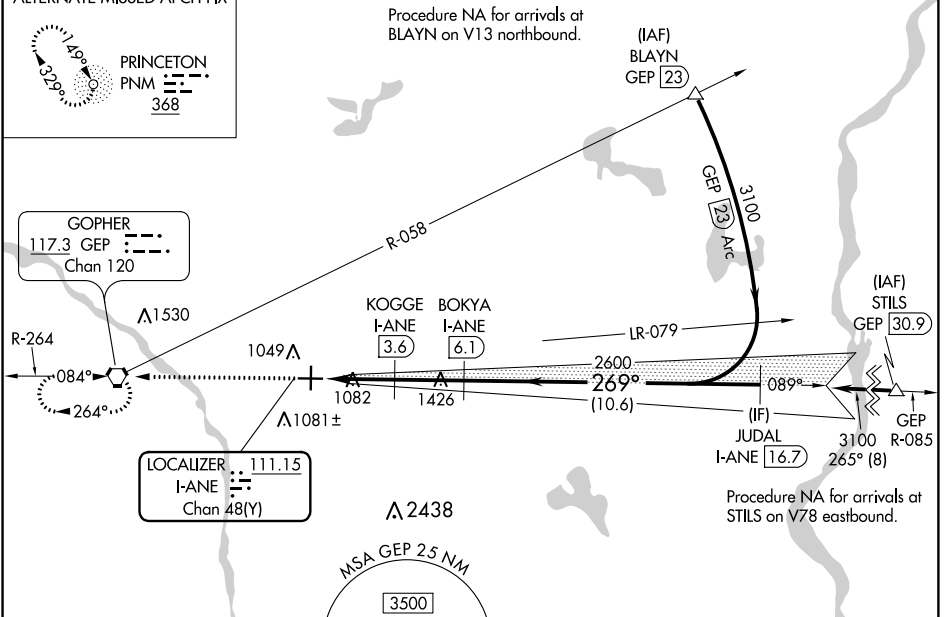
ILS or LOC RWY 27
ANOKA COUNTY-BLAINE (JANES FIELD) (A.N.E.)

DME required.		MALSRR 	MISSED APPROACH: Climb to 2700 direct GEP VORTAC and hold.			
ATIS 120.625	MINNEAPOLIS APP CON 126.5 335.65	ANOKA TOWER* 132.4 (CTAF)	GND CON 121.85	CLNC DEL 121.3	MINNEAPOLIS CLNC DEL 121.85 (When tower closed)	UNICOM 122.95

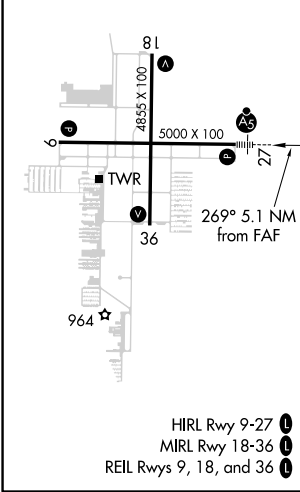
ALTERNATE MISSED APCH FX

PRINCETON
PNM
368

GOPHER
117.3 GEP
Chan 120



ELEV 912	TDZE 910
----------	----------



DME REQUIRED

2700 GEP

Use I-ANE DME when on the localizer course.

BOKYA I-ANE 6.1

JUDAL I-ANE 16.7

KOGGE I-ANE 3.6

2600

269°

3100

1780*

2600

GS 3.00° TCH 49

1.2 NM

1.4 NM

2.5 NM

10.6 NM

CATEGORY	A	B	C	D
S-ILS 27	1110-½ 200 (200-½)			
S-LOC 27	1340-½ 430 (500-½)	1340-¾ 430 (500-¾)	1460-1½ 548 (600-1½)	1340-1 430 (500-1)
CIRCLING	1400-1 488 (500-1)			1580-2 668 (700-2)

NC-1, 10 OCT 2019 to 07 NOV 2019

NC-1, 10 OCT 2019 to 07 NOV 2019