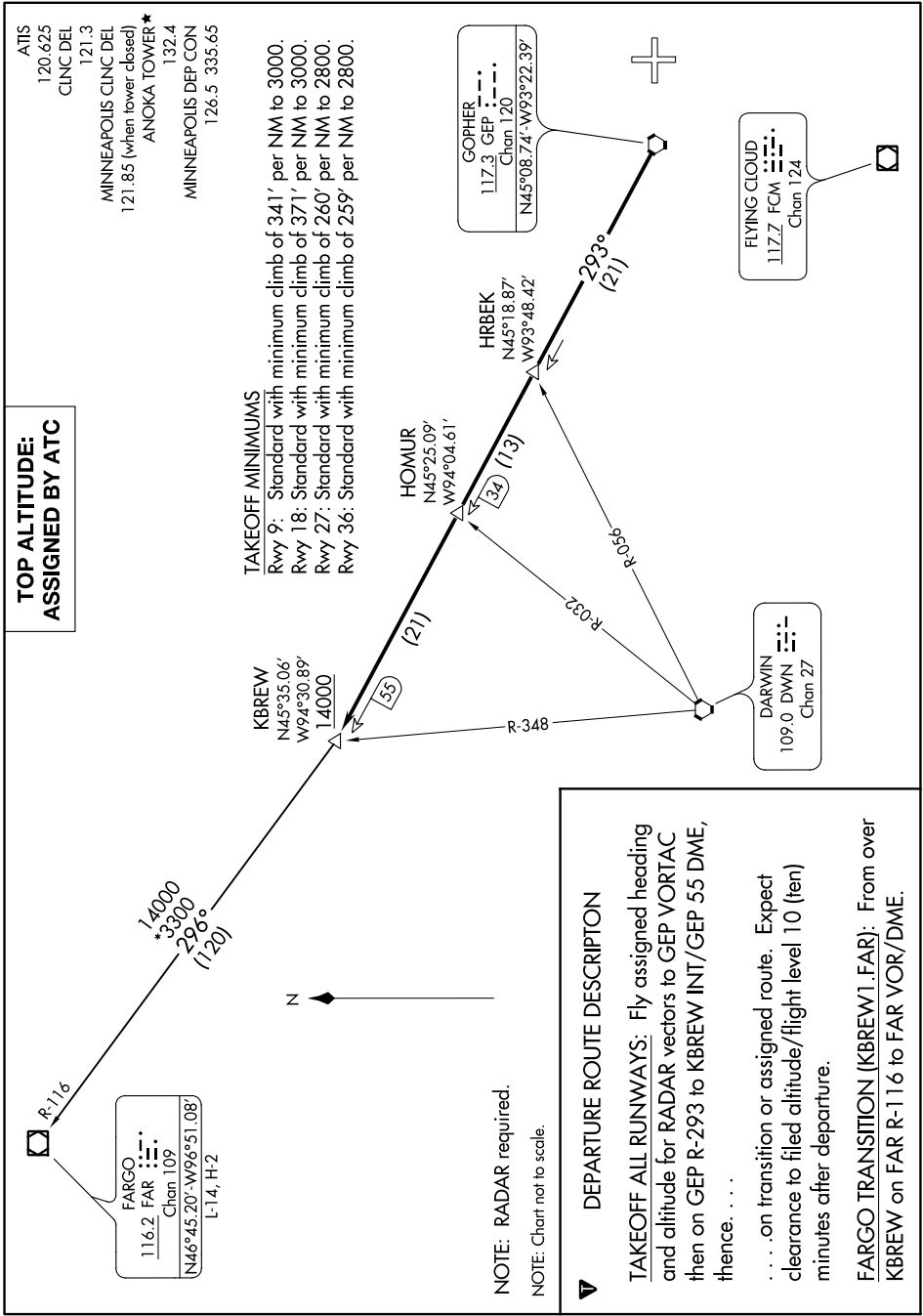


(KBREW1.KBREW) 18032
KBREW ONE DEPARTURE

ANOKA COUNTY-BLAINE (JANES FIELD) (ANE)
 AL-5202 (FAA) MINNEAPOLIS, MINNESOTA

16.10.2019 10:07:10 NC-1



**TOP ALTITUDE:
 ASSIGNED BY ATC**

TAKEOFF MINIMUMS

Rwy 9: Standard with minimum climb of 341' per NM to 3000.
 Rwy 18: Standard with minimum climb of 371' per NM to 3000.
 Rwy 27: Standard with minimum climb of 260' per NM to 2800.
 Rwy 36: Standard with minimum climb of 259' per NM to 2800.

NOTE: RADAR required.
 NOTE: Chart not to scale.

DEPARTURE ROUTE DESCRIPTOR

TAKEOFF ALL RUNWAYS: Fly assigned heading and altitude for RADAR vectors to GEP VORTAC then on GEP R-293 to KBREW INT/GEP 55 DME, thence. . . .
 . . . on transition or assigned route. Expect clearance to filed altitude/flight level 10 (ten) minutes after departure.
FARGO TRANSITION (KBREW1.FAR): From over KBREW on FAR R-116 to FAR VOR/DME.

KBREW ONE DEPARTURE
 (KBREW1.KBREW) 01FEB18

MINNEAPOLIS, MINNESOTA
 ANOKA COUNTY-BLAINE (JANES FIELD) (ANE)

16.10.2019 07:07:10 NC-1