

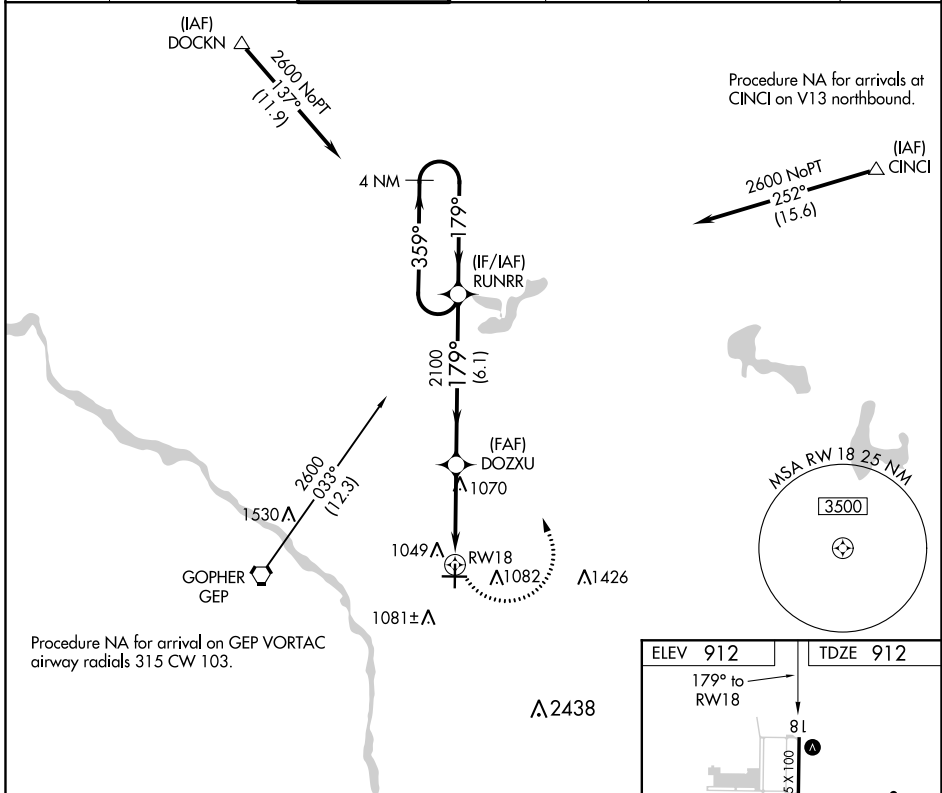
APP CRS	Rwy Idg	4855
179°	TDZE	912
	Apt Elev	912

RNAV (GPS) RWY 18

ANOKA COUNTY-BLAINE (JANES FIELD) (A.N.E.)

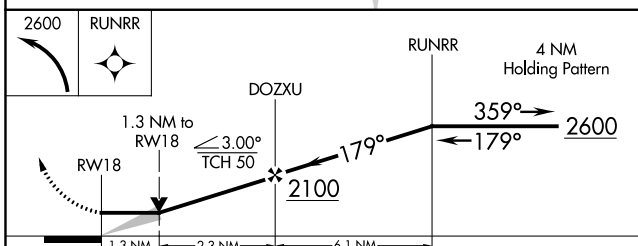
DME/DME RNP-0.3 NA.			MISSED APPROACH: Climbing left turn to 2600 direct RUNRR and hold.			
---------------------	--	--	--	--	--	--

ATIS	MINNEAPOLIS APP CON	ANOKA TOWER*	GND CON	CLNC DEL	MINNEAPOLIS CLNC DEL	UNICOM
120.625	126.5 335.65	132.4 (CTAF) 0	121.85	121.3	121.85 (When tower closed)	122.95



NC-1, 10 OCT 2019 to 07 NOV 2019

NC-1, 10 OCT 2019 to 07 NOV 2019



ELEV 912	TDZE 912
----------	----------

The AIC shows RWY 18 (5000 x 100 ft) and RWY 36 (5000 x 100 ft). It also indicates the Tower (TWR) at 912 ft, Tower Light (TL) at 964 ft, and other taxiway lights. The chart includes a 5000 x 100 ft runway layout and a 4855 x 100 ft taxiway.

CATEGORY	A	B	C	D
LNNAV MDA	1380-1 468 (500-1)		1380-1 ³ / ₈ 468 (500-1 ³ / ₈)	1380-1 ¹ / ₂ 468 (500-1 ¹ / ₂)
C CIRCLING	1400-1 488 (500-1)		1460-1 ¹ / ₂ 548 (600-1 ¹ / ₂)	1580-2 668 (700-2)

- HIRL Rwy 9-27 **0**
- MIRL Rwy 18-36 **0**
- REIL Rws 9, 18 and 36 **0**