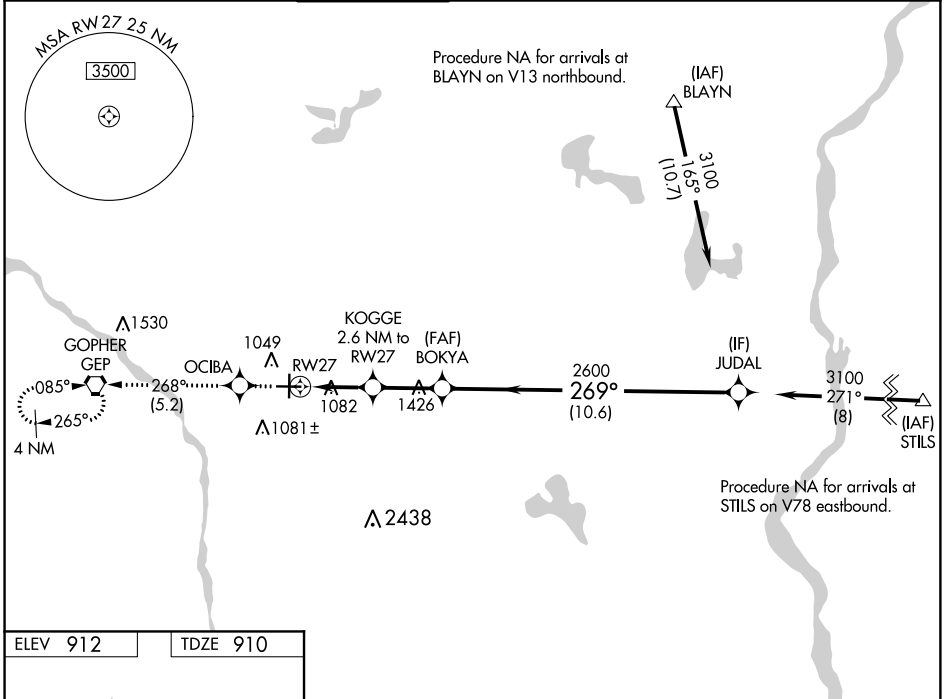


WAAS CH 78300 W27A	APP CRS 269°	Rwy Idg 5000 TDZE 910 Apt Elev 912
--	------------------------	---

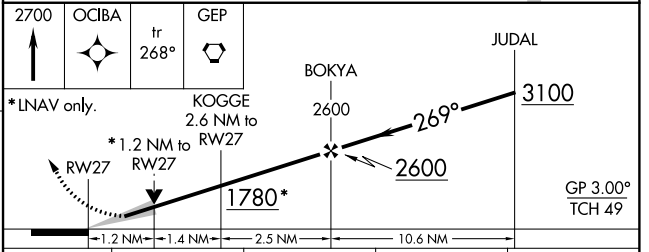
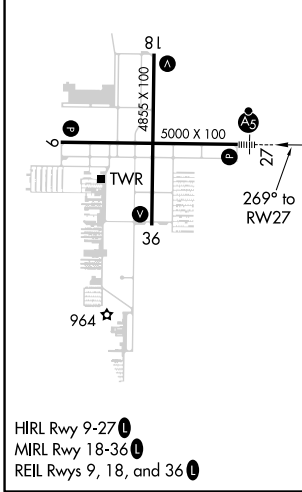
RNAV (GPS) RWY 27

ANOKA COUNTY-BLAINE (JANES FIELD) (A.N.E.)

<p>▽ For uncompensated Baro-VNAV systems, LNAV/VNAV NA below -16°C (4°F) or above 54°C (130°F). DME/DME RNP-0.3 NA. For inop ALS, increase LNAV/VNAV all Cats visibility to 1 3/8 SM.</p>		<p>MALSR</p>	<p>MISSED APPROACH: Climb to 2700 direct OCIBA and track 268° to GEP VORTAC and hold.</p>			
<p>ATIS 120.625</p>	<p>MINNEAPOLIS APP CON 126.5 335.65</p>	<p>ANOKA TOWER* 132.4 (CTAF) 0</p>	<p>GND CON 121.85</p>	<p>CLNC DEL 121.3</p>	<p>MINNEAPOLIS CLNC DEL 121.85 (When tower closed)</p>	<p>UNICOM 122.95</p>



ELEV 912	TDZE 910
----------	----------



CATEGORY	A	B	C	D
LPV DA	1160-1/2 250 (300-1/2)			
LNAV/VNAV DA	1371-1 461 (500-1)			
LNAV MDA	1340-1/2	430 (500-1/2)	1340-3/4 430 (500-3/4)	1340-1 430 (500-1)
C CIRCLING	1400-1	488 (500-1)	1460-1/2 548 (600-1/2)	1580-2 668 (700-2)

NC-1, 10 OCT 2019 to 07 NOV 2019

NC-1, 10 OCT 2019 to 07 NOV 2019