

SCHEP NINE DEPARTURE

6102 AON ZO of 6102 ICO 01 '1'-CN

TOP ALTITUDE: ASSIGNED BY ATC



MINNEAPOLIS
115.3 MSP
Chan. 100
N44°53.79'-W93°14.19'

FARMINGTON
115.7 FGT
Chan. 104

HALFWAY
111.2 FOW
Chan. 49

NOTE: RADAR required.
NOTE: Chart not to scale.

DEPARTURE ROUTE DESCRIPTION

TAKEOFF ALL RUNWAYS: Fly assigned heading and altitude for RADAR vectors to MSP VOR/DME then on MSP R-232 to SCHEP INT/MSP 66 DME, thence
. . . . on transition or assigned route. Expect clearance to filed altitude/flight level 10 (ten) minutes after departure.

O'NEILL TRANSITION (SCHEP9.ONL): From over SCHEP INT on MSP R-232 and OTG R-045 to OTG VOR/DME, then on OTG R-236 and ONL R-052 to ONL VORTAC.
WOLBACH TRANSITION (SCHEP9.OBH): From over SCHEP INT on MSP R-232 and OTG R-045 to OTG VOR/DME, then on OTG R-215 and OBH R-034 to OBH VORTAC.

TAKEOFF MINIMUMS

- Rwy 9: Standard with minimum climb of 341' per NM to 3000.
- Rwy 18: Standard with minimum climb of 371' per NM to 3000.
- Rwy 27: Standard with minimum climb of 259' per NM to 2800.
- Rwy 36: Standard with minimum climb of 259' per NM to 2800.

- ATIS 120.625
- CLNC DEL 121.3
- MINNEAPOLIS CLNC DEL 121.85 (when tower closed)
- ANOKA TOWER * 132.4
- MINNEAPOLIS DEP CON 126.5 335.65

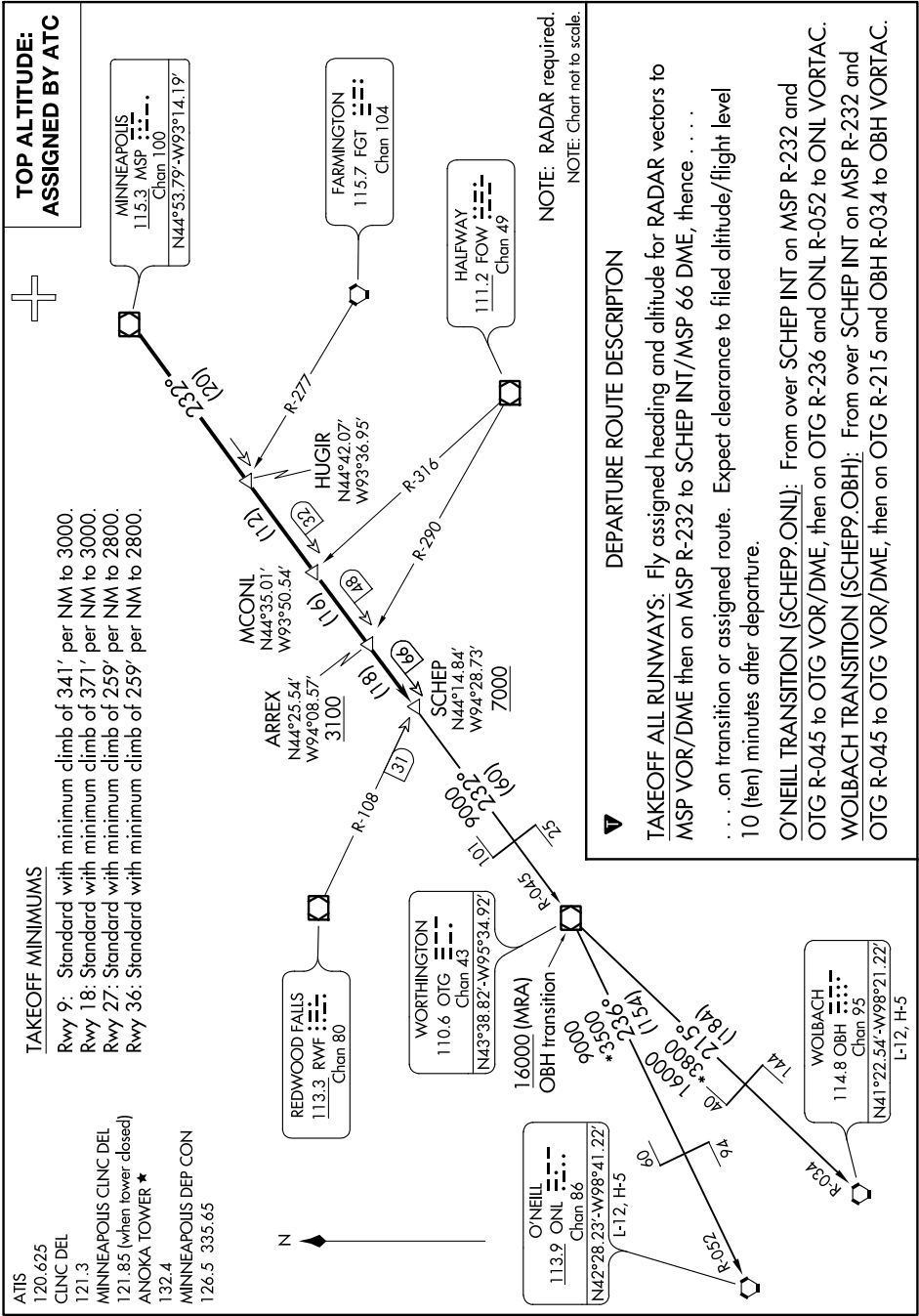
(when tower closed)

ANOKA TOWER *

MINNEAPOLIS DEP CON

126.5 335.65

SCHEP NINE DEPARTURE (SCHEP9.SCHEP) 17AUG17



NC-1. 10 OCT 2019 to 07 NOV 2019