

WAAS CH <b>45934</b> <b>W06A</b>	APP CRS <b>054°</b>	Rwy Idg TDZE Apt Elev	<b>3757</b> <b>1430</b> <b>1444</b>
--	------------------------	-----------------------------	---

# RNAV (GPS) RWY 6

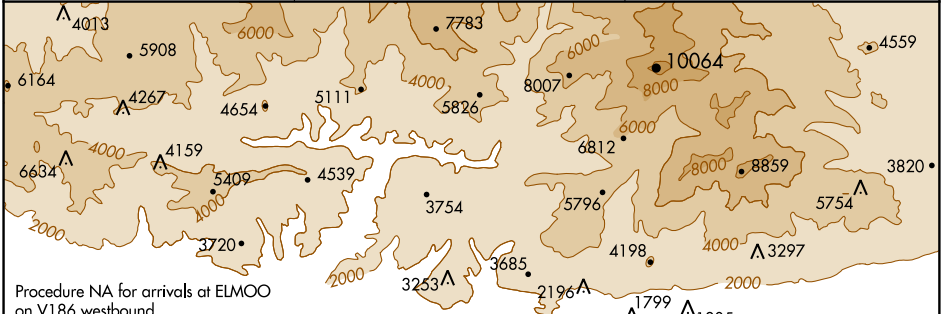
CABLE (CCB)

**RNP APCH.**

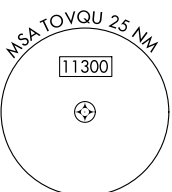
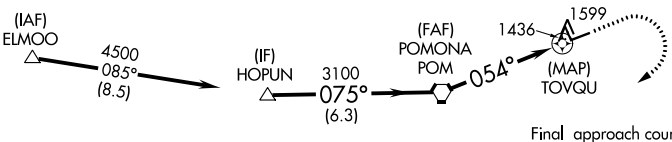
**NA** Circling NA northwest of Rwy 6-24. Rwy 6 helicopter visibility reduction below 3/4 SM NA. Circling Rwy 24 NA at night. When local altimeter setting not received, use Ontario altimeter setting and increase all MDA 100 feet.

**MISSED APPROACH:** Climb to 1900 then climbing right turn to 5500 direct ADAMM and hold, continue climb-in-hold to 5500.

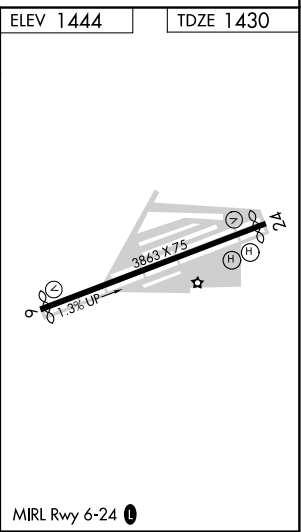
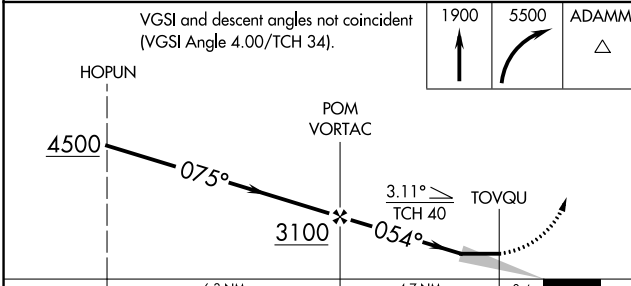
<b>AWOS-3P</b> <b>119.525</b>	<b>SOCAL APP CON</b> <b>125.5 349.0</b>	<b>UNICOM</b> <b>123.0 (CTAF)</b>
----------------------------------	--	--------------------------------------



Procedure NA for arrivals at ELMOO on V186 westbound.



<b>ELEV 1444</b>	<b>TDZE 1430</b>
------------------	------------------



CATEGORY	A	B	C	D
LP MDA	1780-1	350 (400-1)	1780-1 1/8 350 (400-1 1/8)	NA
LNAV MDA	1940-1	510 (500-1)	1940-1 1/8 510 (500-1 1/8)	NA
<b>CIRCLING</b>	2020-1	576 (600-1)	2140-2 696 (700-2)	NA

MIRL Rwy 6-24

SW-3, 10 OCT 2019 to 07 NOV 2019

SW-3, 10 OCT 2019 to 07 NOV 2019