

APP CRS <b>114°</b>	Rwy Idg <b>3000</b>
	TDZE <b>150</b>
	Apt Elev <b>150</b>

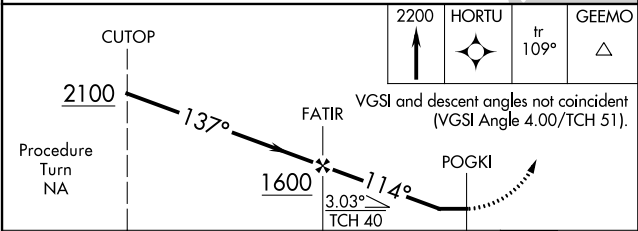
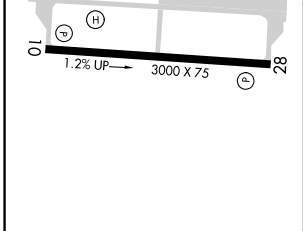
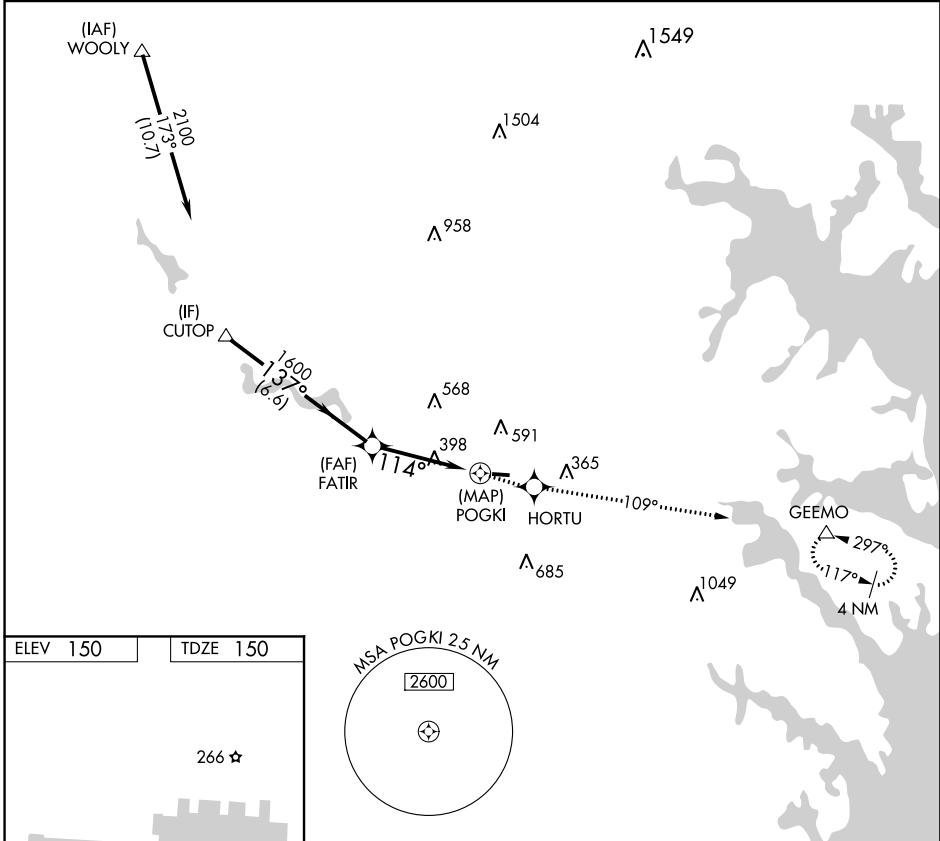
# RNAV (GPS) RWY 10

TIPTON (FME)

**⚠** DME/DME RNP-0.3 NA. Night landing: Rwy 10 NA. When local altimeter setting not received, use Baltimore-Washington Intl Thurgood Marshall altimeter setting and increase all MDA 20 feet. Helicopter visibility reduction below 1 SM NA.

**MISSED APPROACH:** Climb to 2200 direct HORTU and via 109° track to GEEMO and hold.

AWOS-3 <b>123.925</b>	POTOMAC APP CON <b>119.7 290.475</b>	UNICOM <b>123.05 (CTAF) 0</b>
--------------------------	---	----------------------------------



REIL Rwy 10 and 28 <b>0</b>			
MIRL Rwy 10-28 <b>0</b>			
CATEGORY	A	B	D
LNAV MDA	800-1	650 (700-1)	NA
CIRCLING	840-1	690 (700-1)	NA

NE-3, 10 OCT 2019 to 07 NOV 2019

NE-3, 10 OCT 2019 to 07 NOV 2019