

APP CRS 284°	Rwy Idg TDZE Apt Elev	3000 150 150
------------------------	-----------------------------	---

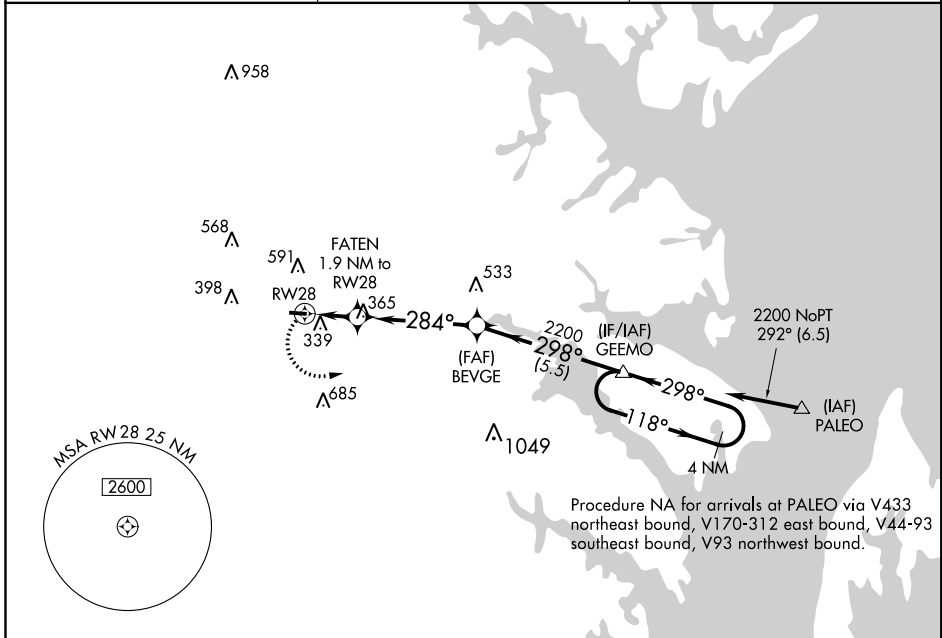
RNAV (GPS) RWY 28

TIPTON (FME)

⚠ DME/DME RNP-0.3 NA. Night landing: Rwy 10 NA. Helicopter visibility reduction below ¼ SM NA. When local altimeter setting not received, use Baltimore-Washington Intl Thurgood Marshall altimeter setting and increase all MDA 20 feet.

⚠ MISSED APPROACH: Climbing left turn to 2200 direct GEEMO and hold.

AWOS-3 123.925	POTOMAC APP CON 119.7 290.475	UNICOM 123.05 (CTAF) 0
--------------------------	---	----------------------------------

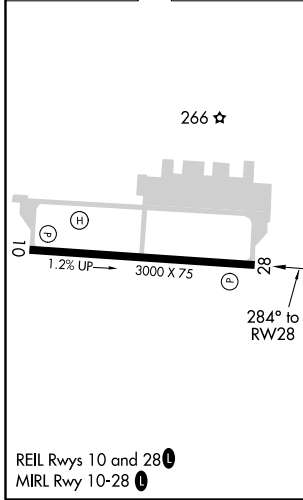


Procedure NA for arrivals at PALEO via V433 northeast bound, V170-312 east bound, V44-93 southeast bound, V93 northwest bound.

NE-3, 10 OCT 2019 to 07 NOV 2019

NE-3, 10 OCT 2019 to 07 NOV 2019

ELEV 150	TDZE 150
----------	----------



2200	GEEMO	VGSI and descent angles not coincident (VGSI Angle 4.00/TCH 57).		
<p>4 NM Holding Pattern</p>				
<p>FATEN 1.9 NM to RW28</p> <p>BEVGE</p> <p>GEEMO</p> <p>2200</p> <p>284°</p> <p>298°</p> <p>118°</p> <p>298°</p> <p>2200</p> <p>800</p> <p>≤ 3.05°</p> <p>TCH 40</p> <p>1.9 NM</p> <p>4.3 NM</p> <p>5.5 NM</p>				
CATEGORY	A	B	C	D
LNAV MDA	600-1	450 (500-1)		NA
CIRCLING	820-1	670 (700-1)		NA