

WAAS CH 86813 W07A	APP CRS 067°	Rwy Idg TDZE Apt Elev	5600 3793 3793
--	------------------------	-----------------------------	---

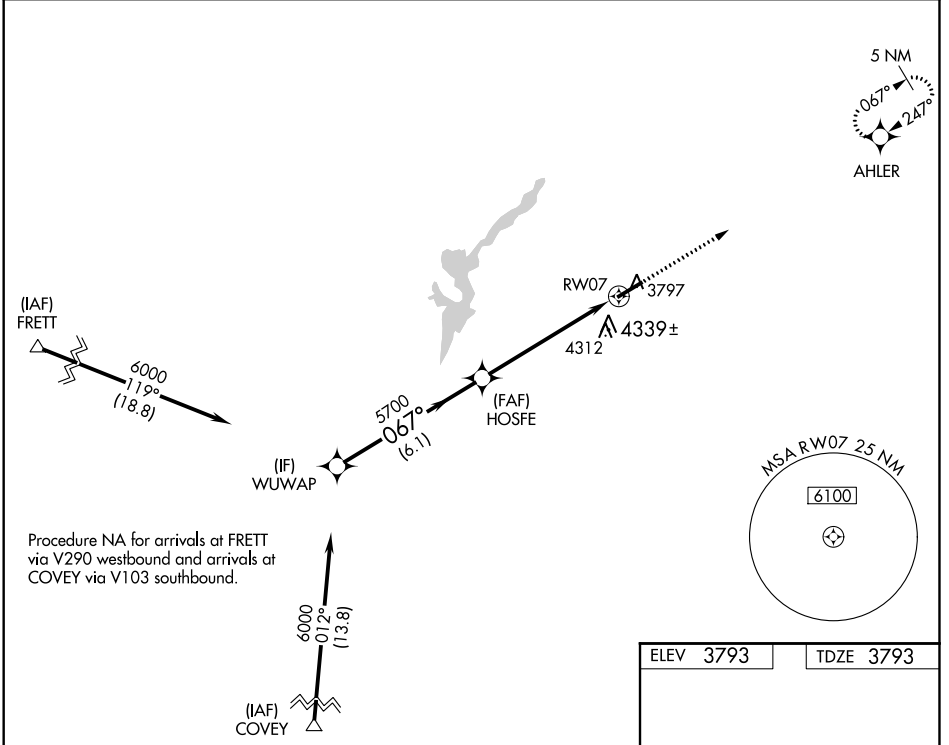
RNAV (GPS) RWY 7

INGALLS FIELD (HSP)

⚠ Circling NA southeast of Rwy 7-25. Baro-VNAV NA.
⚠ DME/DME RNP-0.3 NA. Visibility reduction by helicopters NA.
 When local altimeter setting not received, procedure NA.

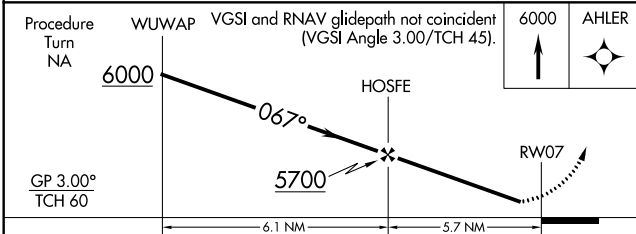
MISSED APPROACH: Climb to 6000 direct AHLER and hold.

AWOS-3 118.8	WASHINGTON CENTER 134.4 353.9	UNICOM 123.0 (CTAF) 0
------------------------	---	---------------------------------



NE-3, 10 OCT 2019 to 07 NOV 2019

NE-3, 10 OCT 2019 to 07 NOV 2019



ELEV 3793	TDZE 3793
-----------	-----------

REIL Rwy 25 0
HIRL Rwy 7-25 0

CATEGORY	A	B	C	D
LPV DA	4143-1¼		350 (400-1¼)	
LNNAV/VNAV DA	4619-3		826 (900-3)	
LNNAV MDA	4700-1¼ 907 (1000-1¼)		4700-2¾ 907 (1000-2¾)	4700-3 907 (1000-3)
CIRCLING	4700-1¼ 907 (1000-1¼)		4700-2¾ 907 (1000-2¾)	4700-3 907 (1000-3)