

LOC/DME I-SFZ	APP CRS	Rwy Idg	<b>5000</b>
<b>111.9</b>	<b>047°</b>	TDZE	<b>429</b>
Chan <b>56</b>		Apt Elev	<b>441</b>

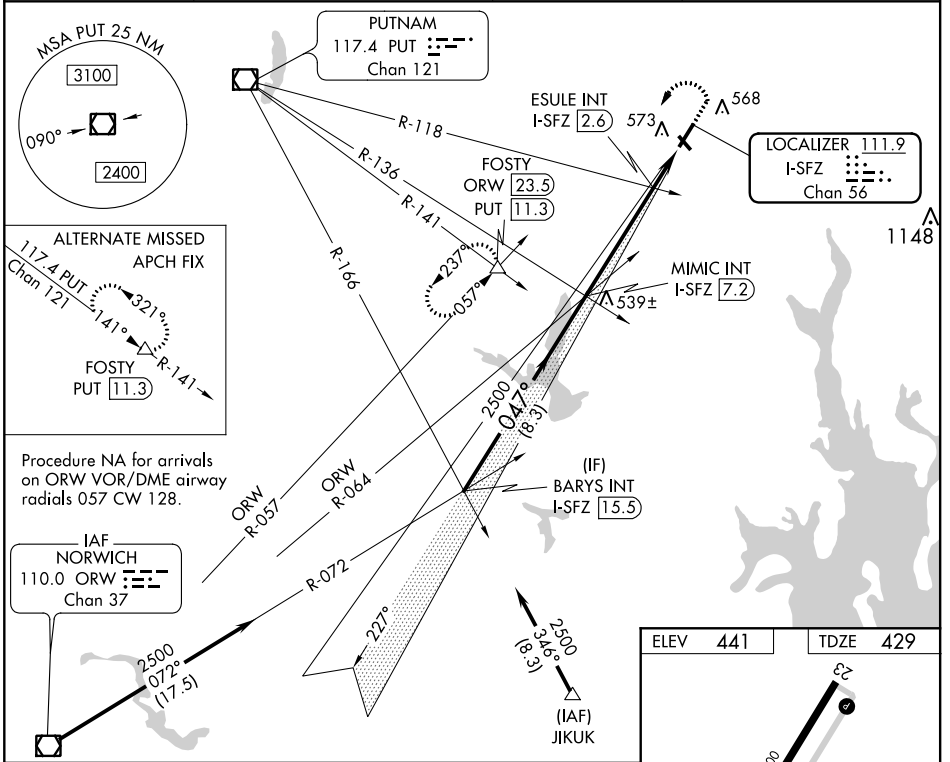
# LOC RWY 5

NORTH CENTRAL STATE (SF/Z)

**NA** Circling Rwy 15, 33 NA at night. VDP NA with Providence altimeter setting. When local altimeter setting not received, use Providence altimeter setting and increase all MDA 100 feet; increase S-5 Cat C and Circling Cat C visibility 1/4 mile, and ESULE fix minimums S-5 Cat C visibility 1/4 mile.

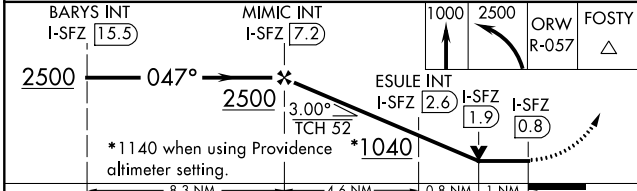
**MALS** MISSED APPROACH: Climb to 1000 then climbing left turn to 2500 on ORW VOR/DME R-057 to FOSTY INT/ ORW 23.5 DME and hold.

AWOS-3PT	PROVIDENCE APP CON *	CINC DEL	UNICOM
<b>120.775</b>	<b>123.675 244.875</b>	<b>124.35</b>	<b>123.075 (CTAF) 0</b>



Procedure NA for arrivals on ORW VOR/DME airway radials 057 CW 128.

IAF NORWICH 110.0 ORW Chan 37



CATEGORY	A	B	C	D
S-5	1040-3/4 611 (600-3/4)		1040-1 1/2 611 (600-1 1/2)	NA
CIRCLING	1040-1 599 (600-1)		1040-1 3/4 599 (600-1 3/4)	NA
ESULE FIX MINIMUMS (DUAL VOR RECEIVERS OR DME REQUIRED)				
S-5	800-3/4 371 (400-3/4)		800-7/8 371 (400-7/8)	NA
CIRCLING	900-1 459 (500-1)		900-1 1/2 459 (500-1 1/2)	NA

ELEV 441	TDZE 429
----------	----------

HIRL Rwy 5-23  
MIRL Rwy 15-33  
REIL Rwy 15, 23 and 33

FAF to MAP 6.4 NM					
Knots	60	90	120	150	180
Min:Sec	6:24	4:16	3:12	2:34	2:08

NE-1, 10 OCT 2019 to 07 NOV 2019

NE-1, 10 OCT 2019 to 07 NOV 2019