

WAAS CH <b>50231</b> <b>W05A</b>	APP CRS <b>047°</b>	Rwy Idg TDZE <b>429</b> Apt Elev <b>441</b>	<b>5000</b>
--	------------------------	---	-------------

# RNAV (GPS) RWY 5

NORTH CENTRAL STATE (SFZ)

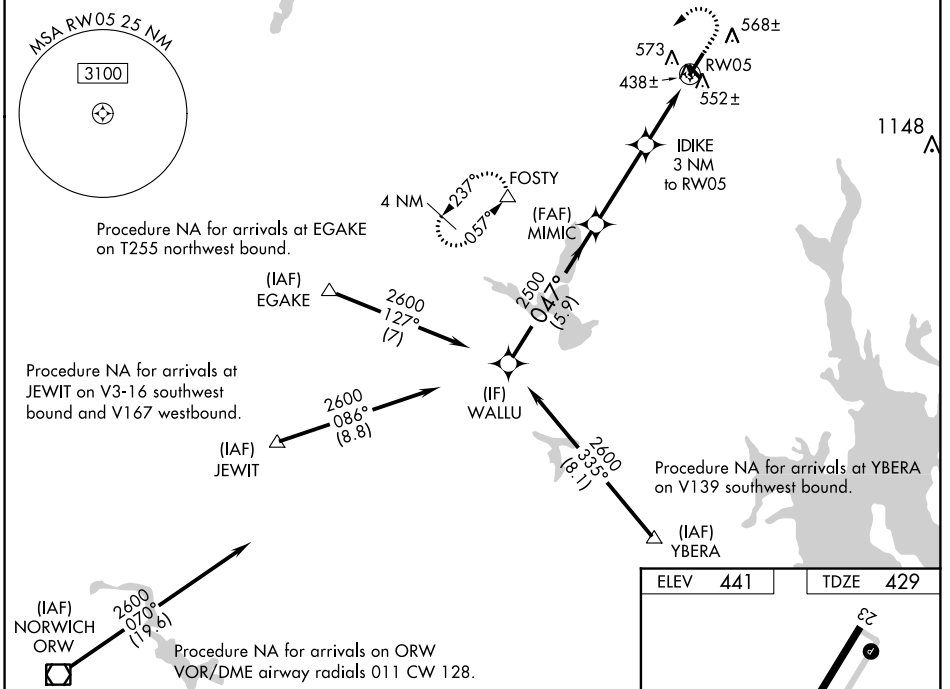
**⚠** Circling Rwy 15, 33 NA at night. Baro-VNAV NA when using Providence altimeter setting. For uncompensated Baro-VNAV systems, LNAV/VNAV NA below -15°C (4°F) or above 54°C (130°F). For inoperative MALS, increase LPV all Cats visibility to 7/8 mile. DME/DME RNP-0.3 NA. VDP NA with Providence altimeter setting. When local altimeter setting not received, use Providence altimeter setting and increase all DA 82 feet and all MDA 100 feet; increase LPV all Cats visibility 1/8 mile, increase LNAV/VNAV all Cats and LNAV Cat C visibility 1/4 mile. For inoperative MALS, when using Providence altimeter setting increase LPV all Cats visibility to 1 mile.

MALS



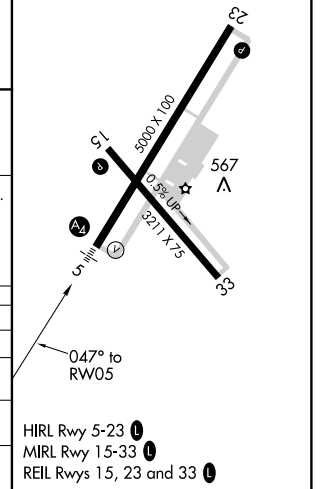
**MISSED APPROACH:**  
Climb to 2000 then climbing left turn to 2500 direct FOSTY and hold.

AWOS-3PT <b>120.775</b>	PROVIDENCE APP CON ★ <b>123.675 244.875</b>	CLNC DEL <b>124.35</b>	UNICOM <b>123.075 (CTAF) 0</b>
----------------------------	--	---------------------------	-----------------------------------



ELEV 441	TDZE 429
----------	----------

WALLU		MIMIC		IDIKE		FOSTY	
2600		2500		2500		2000	
0.47°		0.47°		3 NM to RW05		1 NM to RW05	
GP 3.00°		*1420		*1 NM to RW05		*NAV only.	
TCH 52		5.9 NM		3.4 NM		2 NM	
						1 NM	
CATEGORY	A	B	C	D			
LPV DA	700-3/4		271 (300-3/4)	NA			
LNAV/VNAV DA	835-1 1/8		406 (400-1 1/8)	NA			
LNAV MDA	800-3/4		371 (400-3/4)	800-7/8	371 (400-7/8)		
CIRCLING	900-1		459 (500-1)	900-1 1/2	459 (500-1 1/2)		



NE-1, 10 OCT 2019 to 07 NOV 2019

NE-1, 10 OCT 2019 to 07 NOV 2019