

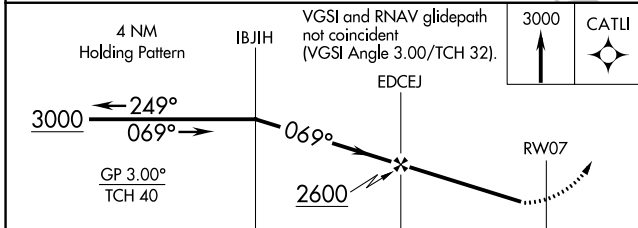
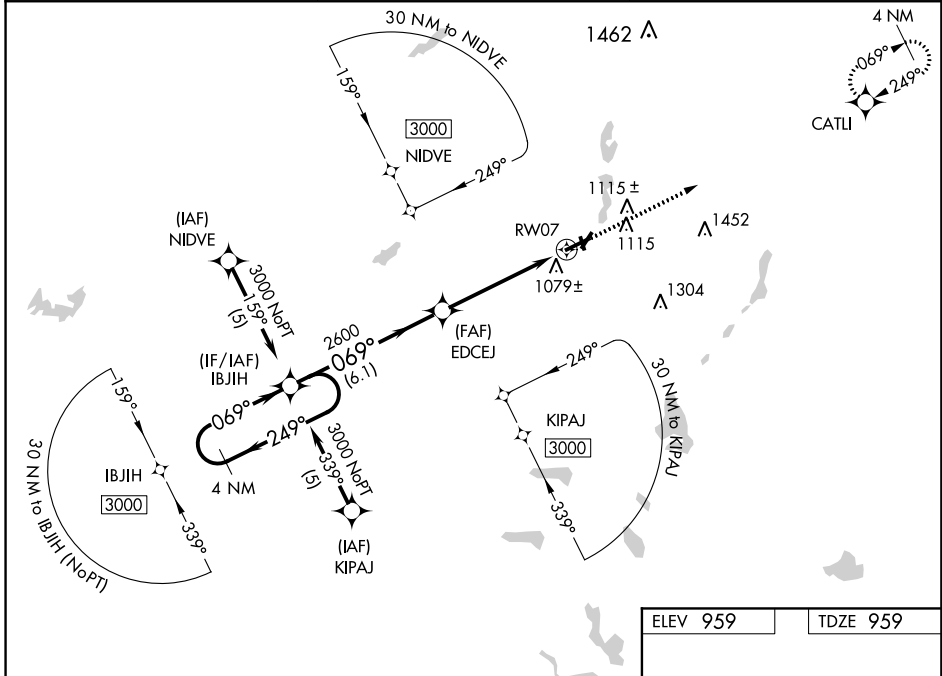
WAAS CH 56506 W07A	APP CRS 069°	Rwy Idg TDZE Apt Elev	5350 959 959
--	------------------------	-----------------------------	---

RNAV (GPS) RWY 7
BRANCH COUNTY MEMORIAL (O/E/B)

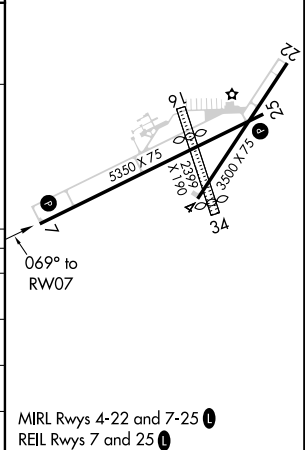
⚠ Baro-VNAV NA when using Sturgis altimeter setting. For uncompensated Baro-VNAV systems, LNAV/VNAV NA below -16°C (4°F) or above 54°C (130°F). DME/DME RNP-0.3 NA.
⚠ Visibility reduction by helicopters NA. Circling to Rwy 16-34 NA. When local altimeter setting not received, use Sturgis altimeter setting and increase all DAs 48 feet and LPV visibility ¼ mile all Cats and all MDAs 60 feet and LNAV Cat C visibility ¼ mile.

MISSED APPROACH: Climb to 3000 direct CATLI and hold.

AWOS-3 118.125	GREAT LAKES APP CON * 121.2 239.25	UNICOM 122.7 (CTAF) 0
--------------------------	--	---------------------------------



ELEV 959	TDZE 959
----------	----------



CATEGORY	A	B	C	D
LPV DA	1307-1¼	348 (400-1¼)		NA
LNAV/VNAV DA	1418-1¾	459 (500-1¾)		NA
LNAV MDA	1420-1	461 (500-1)	1420-1¼ 461 (500-1¼)	NA
CIRCLING	1420-1	461 (500-1)	1480-1½ 521 (600-1½)	NA

MIRA Rwy 4-22 and 7-25 0
REIL Rwy 7 and 25 0

EC-1, 10 OCT 2019 to 07 NOV 2019

EC-1, 10 OCT 2019 to 07 NOV 2019