

VOR/DME LFD <b>111.2</b> Chan <b>49</b>	APP CRS <b>064°</b>	Rwy ldg <b>5350</b> TDZE <b>959</b> Apt Elev <b>959</b>
---	------------------------	---

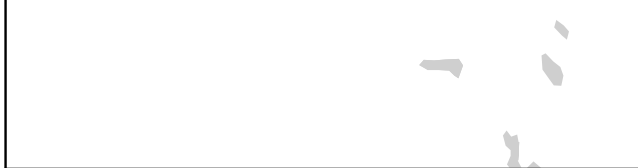
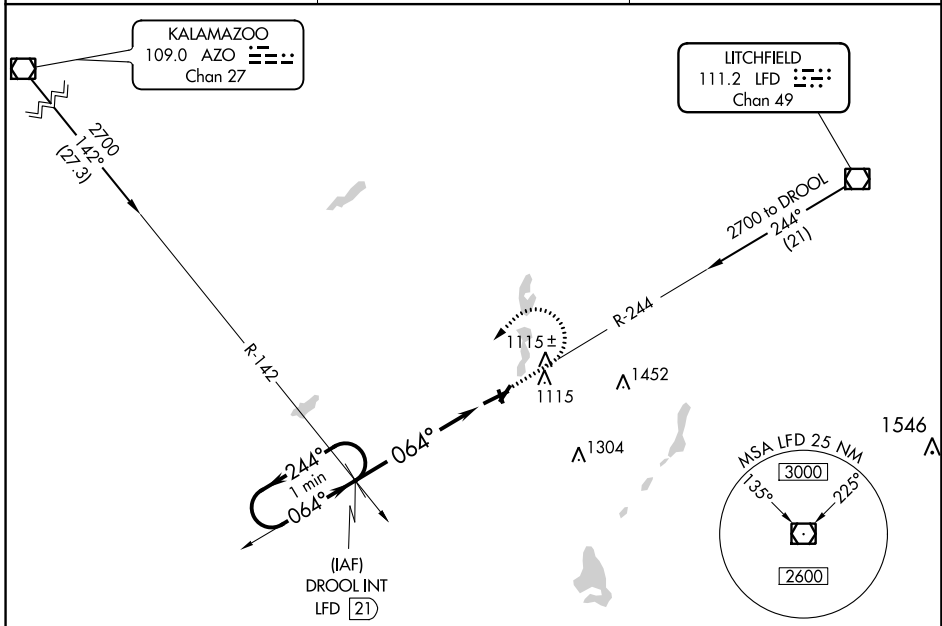
# VOR RWY 7

BRANCH COUNTY MEMORIAL (O/E/B)

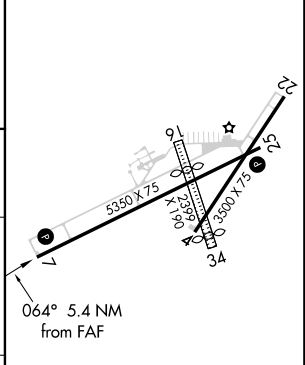
**⚠** When local altimeter setting not received, use Sturgis altimeter setting and increase all MDAs 60 feet and S-7 Cat C visibility ¼ mile.  
**⚠** Circling to Rwy 16-34 NA. Visibility reduction by helicopters NA.

**MISSED APPROACH:** Climb to 2000 then climbing left turn to 2700 via heading 205° and LFD R-244 to DROOL INT/LFD 21 DME and hold.

AWOS-3 <b>118,125</b>	GREAT LAKES APP CON * <b>121.2 239.25</b>	UNICOM <b>122.7 (CTAF) 0</b>
--------------------------	--	---------------------------------



ELEV 959	TDZE 959
----------	----------



One Minute Holding Pattern	DROOL INT LFD 21	2000	2700	LFD R-244	DROOL INT
2700	←244°	→064°			
VGSI and descent angles not coincident. (VGSI Angle 3.00/TCH 32)			2.96°	LFD 15.6	
			TCH 40		
		5.4 NM			

CATEGORY	A	B	C	D
S-7	1440-1	481 (500-1)	1440-1¼ 481 (500-1¼)	NA
CIRCLING	1440-1	481 (500-1)	1480-1½ 521 (600-1½)	NA

MIRL Rwy 4-22 and 7-25 0  
 REIL Rwy 7 and 25 0  
 FAF to MAP 5.4 NM

Knots	60	90	120	150	180
Min:Sec	5:24	3:36	2:42	2:10	1:48

EC-1, 10 OCT 2019 to 07 NOV 2019

EC-1, 10 OCT 2019 to 07 NOV 2019