

VOR/DME LFD 111.2 Chan 49	APP CRS 244°	Rwy Idg 5350 TDZE 959 Apt Elev 959
---	------------------------	---

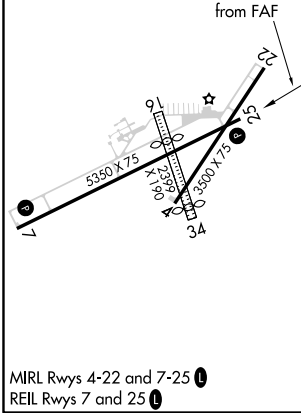
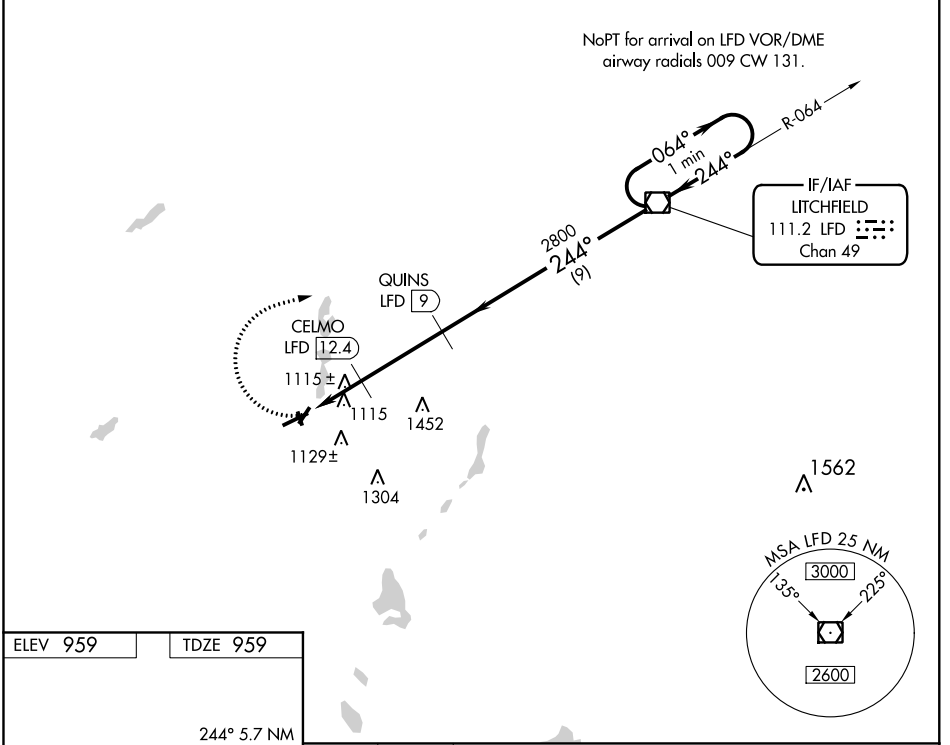
VOR/DME RWY 25

BRANCH COUNTY MEMORIAL (O.E.B)

⚠ When local altimeter setting not received, use Sturgis altimeter setting and increase all MDAs 60 feet and S-25 Cat C visibility 1/4 mile. Circling to Rwy 16-34 NA. Visibility reduction by helicopters NA.

MISSED APPROACH: Climbing right turn to 2800 direct LFD VOR/DME and hold.

AWOS-3 118,125	GREAT LAKES APP CON ★ 121.2 239.25	UNICOM 122.7 (CTAF) 0
--------------------------	--	---------------------------------



ELEV 959	TDZE 959															
2800	LFD															
<table border="1"> <thead> <tr> <th>CATEGORY</th> <th>A</th> <th>B</th> <th>C</th> <th>D</th> </tr> </thead> <tbody> <tr> <td>S-25</td> <td>1420 - 1</td> <td>461 (500-1)</td> <td>1420 - 1½ 461 (500-1½)</td> <td>NA</td> </tr> <tr> <td>CIRCLING</td> <td>1420 - 1</td> <td>461 (500-1)</td> <td>1480 - 1½ 521 (600-1½)</td> <td>NA</td> </tr> </tbody> </table>		CATEGORY	A	B	C	D	S-25	1420 - 1	461 (500-1)	1420 - 1½ 461 (500-1½)	NA	CIRCLING	1420 - 1	461 (500-1)	1480 - 1½ 521 (600-1½)	NA
CATEGORY	A	B	C	D												
S-25	1420 - 1	461 (500-1)	1420 - 1½ 461 (500-1½)	NA												
CIRCLING	1420 - 1	461 (500-1)	1480 - 1½ 521 (600-1½)	NA												

EC-1, 10 OCT 2019 to 07 NOV 2019

EC-1, 10 OCT 2019 to 07 NOV 2019