

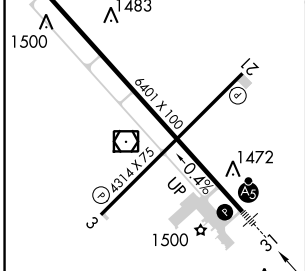
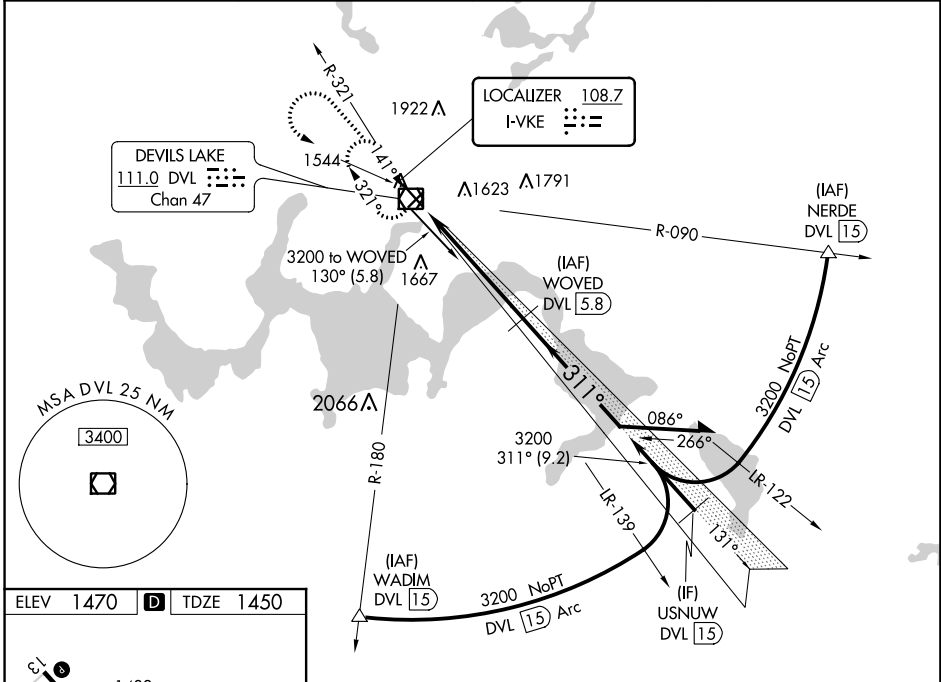
LOC I-VKE <b>108.7</b>	APP CRS <b>311°</b>	Rwy Idg TDZE Apt Elev	<b>6401</b> <b>1450</b> <b>1470</b>
---------------------------	------------------------	-----------------------------	---

# ILS or LOC/DME RWY 31

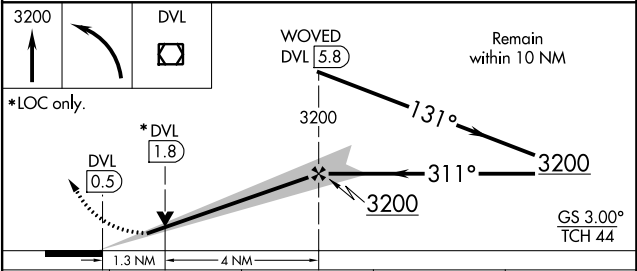
DEVILS LAKE RGNL (DVL)

<p><b>NA</b> When local altimeter setting not received, use Cando altimeter setting and increase all DA 63 feet and all MDA 80 feet and increase S-LOC 31 Cat C/D and Circling Cat C/D visibility ¼ mile. For inop MALSRS when using Cando altimeter setting, increase S-ILS 31 all Cats visibility to ¾ mile and S-LOC 31 Cat C/D to 1½ mile. DME from DVL VOR/DME. Simultaneous reception of I-VKE and DVL DME required.</p>	<p>MALSRS</p>	<p>MISSED APPROACH: Climb to 3200 then left turn direct DVL VOR/DME and hold.</p>
--	---------------	---

AWOS-3PT <b>125.875</b>	MINNEAPOLIS CENTER <b>124.2 270.3</b>	GRAND FORKS RADIO <b>122.3</b>	UNICOM <b>122.8 (CTAF)</b>
----------------------------	--	-----------------------------------	-------------------------------



ELEV 1470	TDZE 1450
<p>HIRL Rwy 13-31</p> <p>REIL Rwy 3, 13 and 21</p> <p>MIRL Rwy 3-21</p>	



CATEGORY	A	B	C	D
S-ILS 31		1650-½	200 (200-½)	
S-LOC 31		1780-½	330 (400-½)	
<b>C</b> CIRCLING	2000-1	530 (600-1)	2240-2¼ 770 (800-2¼)	2240-2½ 770 (800-2½)