

WAAS CH 78417 W21A	APP CRS 218°	Rwy Idg TDZE 1449 Apt Elev 1470	4314
--	------------------------	---	-------------

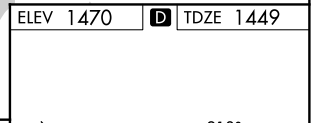
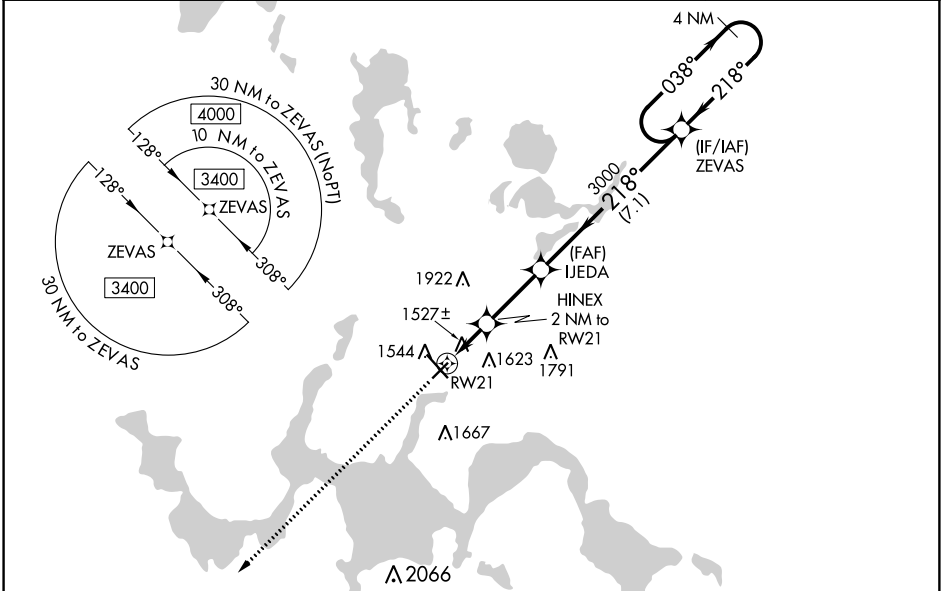
RNAV (GPS) RWY 21

DEVILS LAKE RGNL (DVL)

⚠ For uncompensated Baro-VNAV systems, LNAV/VNAV NA below -17°C (2°F) or above 54°C (130°F). DME/DME RNP-0.3 NA. Helicopter visibility reduction below 3/4 SM NA. Baro-VNAV NA when using Cando altimeter setting. VDP NA with Cando altimeter setting. When local altimeter setting not received, use Cando altimeter setting and increase all DA 63 feet, and all MDA 80 feet, increase LNAV and Circling Cats C and D visibility 1/4 mile.

MISSED APPROACH: Climb to 3400 direct ZIKID and hold.

AWOS-3PT 125.875	MINNEAPOLIS CENTER 124.2 270.3	GRAND FORKS RADIO 122.3	UNICOM 122.8 (CTAF)
----------------------------	--	-----------------------------------	-------------------------------



3400	ZIKID	VGS1 and RNAV glidepath not coincident (VGS1 Angle 3.00/TCH 25).	ZEVAS	4 NM Holding Pattern
*LNAV only.	HINEX 2 NM to RWY 21	IJEDA 3000	3000	038° → 3400
1.1 NM to RWY 21			2120	← 218°
			3000	GP 3.00° TCH 50

CATEGORY	A	B	C	D
LPV DA		1699-1	250 (300-1)	
LNAV/VNAV DA		1699-1	250 (300-1)	
LNAV MDA		1800-1	351 (400-1)	
C CIRCLING	2000-1	530 (600-1)	2240-2 ¹ / ₄ 770 (800-2 ¹ / ₄)	2240-2 ¹ / ₂ 770 (800-2 ¹ / ₂)

ELEV 1470 **D** TDZE 1449

HIRL Rwy 13-31 **D**
REIL Rwy 3, 13 and 21 **D**
MIRL Rwy 3-21 **D**

NC-1, 10 OCT 2019 to 07 NOV 2019

NC-1, 10 OCT 2019 to 07 NOV 2019