

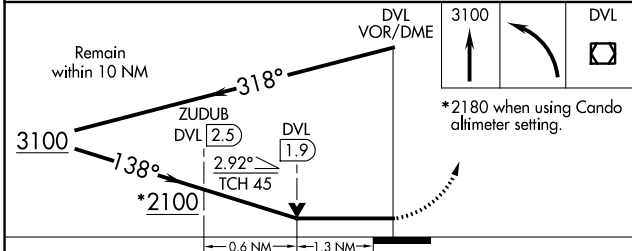
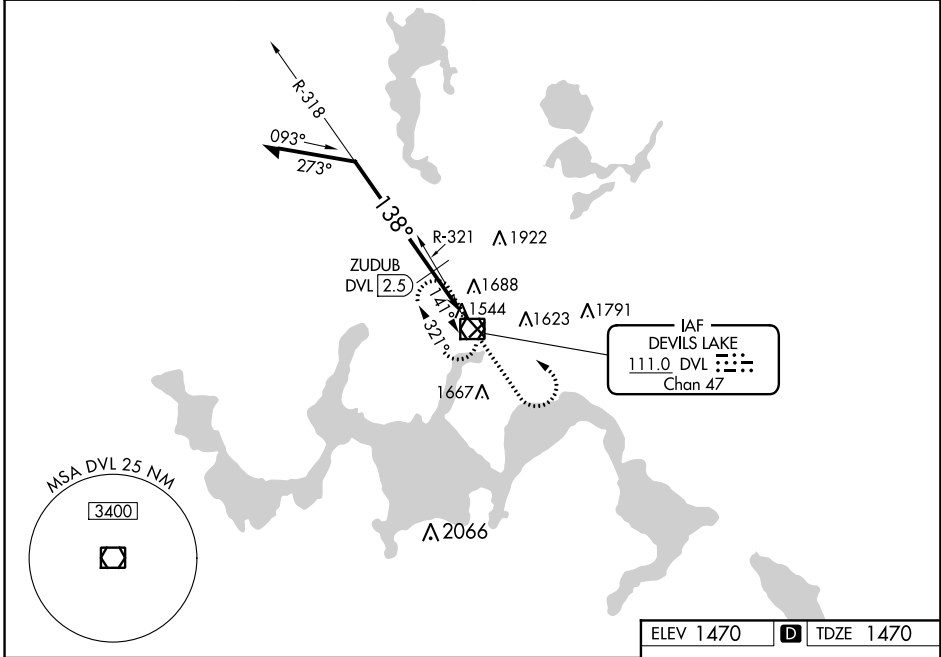
VOR/DME DVL 111.0 Chan 47	APP CRS 138°	Rwy Idg TDZE 1470 Apt Elev 1470
---	------------------------	---

VOR RWY 13
DEVILS LAKE RGNL (DVL)

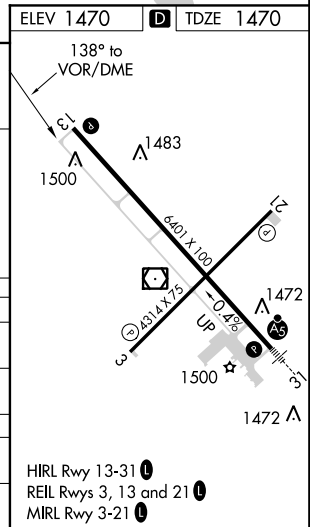
⚠ VDP NA with Cando altimeter setting. When local altimeter setting not received, use Cando altimeter setting and increase all MDA 80 feet, and increase S-13 and Circling Cats C and D visibility ¼ mile, increase ZUDUB fix minimums S-13 and Circling Cats C and D visibility ¼ mile.

MISSED APPROACH: Climb to 3100 then left turn direct DVL VOR/DME and hold.

AWOS-3PT 125.875	MINNEAPOLIS CENTER 124.2 270.3	GRAND FORKS RADIO 122.3	UNICOM 122.8 (CTAF)
----------------------------	--	-----------------------------------	-------------------------------



CATEGORY	A	B	C	D
S-13	2100-1	630 (700-1)	2100-1¾	630 (700-1¾)
C CIRCLING	2100-1	630 (700-1)	2240-2¼ 770 (800-2¼)	2240-2½ 770 (800-2½)
ZUDUB FIX MINIMUMS (DME REQUIRED)				
S-13	1940-1	470 (500-1)	1940-1¾	470 (500-1¾)
C CIRCLING	2000-1	530 (600-1)	2240-2¼ 770 (800-2¼)	2240-2½ 770 (800-2½)



HIRL Rwy 13-31
REIL Rws 3, 13 and 21
MIRL Rwy 3-21

NC-1, 10 OCT 2019 to 07 NOV 2019

NC-1, 10 OCT 2019 to 07 NOV 2019