

VOR/DME DVL <b>111.0</b> Chan 47	APP CRS <b>030°</b>	Rwy Idg <b>4314</b> TDZE <b>1450</b> Apt Elev <b>1470</b>
--	------------------------	---

# VOR RWY 3

DEVILS LAKE RGNL (DVL)

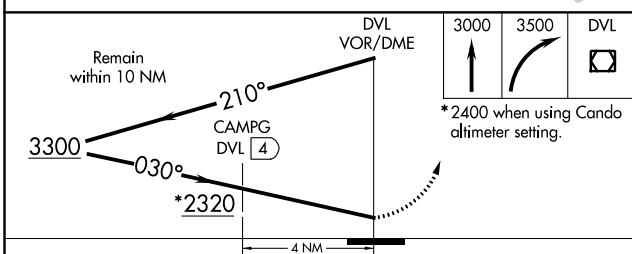
**⚠** When local altimeter setting not received, use Cando altimeter setting and increase all MDA 80 feet, increase S-3 Cat A and Circling Cats C/D visibility ¼ SM, CAMPG fix minimums S-3 Cats C/D visibility ⅓ SM and Circling Cats C/D visibility ¼ SM. Helicopter visibility reduction below 1 SM NA.

**MISSED APPROACH:** Climb to 3000 then climbing right turn to 3500 direct DVL VOR/DME and hold.

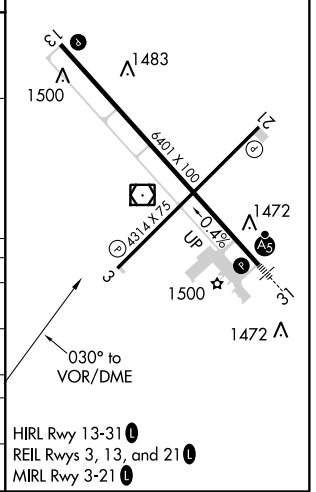
AWOS-3PT <b>125.875</b>	MINNEAPOLIS CENTER <b>124.2 270.3</b>	GRAND FORKS RADIO <b>122.3</b>	UNICOM <b>122.8 (CTAF)</b>
----------------------------	--	-----------------------------------	-------------------------------



ELEV 1470	<b>D</b> TDZE 1450
-----------	--------------------



CATEGORY	A	B	C	D
S-3	2320-1 870 (900-1)	2320-1¼ 870 (900-1¼)	2320-2½ 870 (900-2½)	870 (900-2½)
<b>C</b> CIRCLING	2320-1¼	850 (900-1¼)	2320-2½ 850 (900-2½)	2320-2¾ 850 (900-2¾)
CAMPG FIX MINIMUMS				
S-3	1820-1 370 (400-1)			
<b>C</b> CIRCLING	2000-1 530 (600-1)	2240-2¼ 770 (800-2¼)	2240-2½ 770 (800-2½)	



NC-1, 10 OCT 2019 to 07 NOV 2019

NC-1, 10 OCT 2019 to 07 NOV 2019