

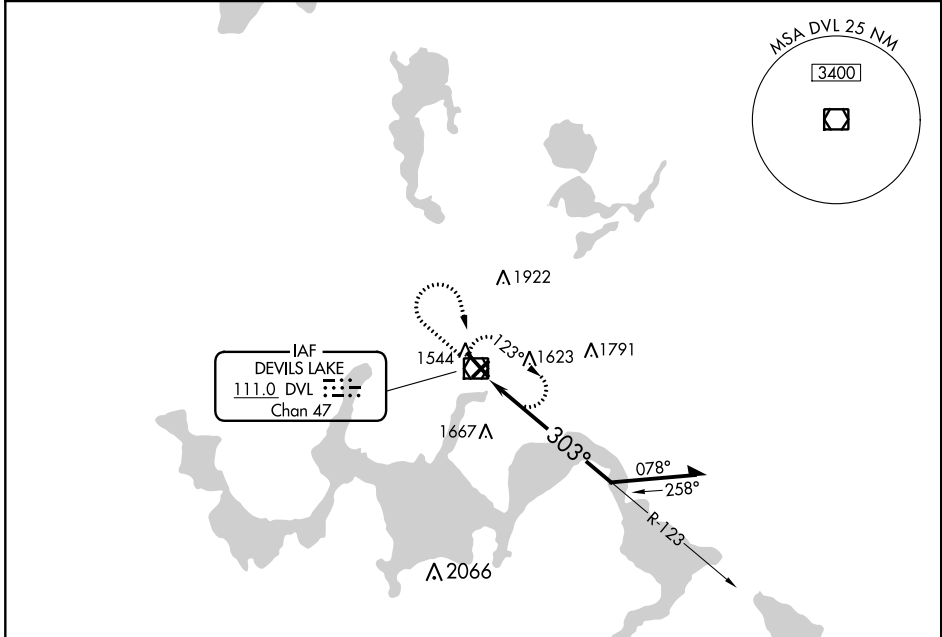
VOR/DME DVL 111.0 Chan 47	APP CRS 303°	Rwy Idg TDZE 1450 Apt Elev 1470
---	------------------------	---

VOR RWY 31

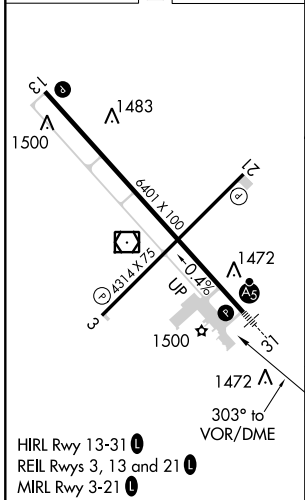
DEVILS LAKE RGNL (DVL)

⚠ When local altimeter setting not received, use Cando altimeter setting and increase all MDA 80 feet, increase S-31 Cats C and D visibility 1/8 mile, and Circling Cats C and D visibility 1/4 mile.	MALSR 	MISSED APPROACH: Climb to 3200 then right turn direct DVL VOR/DME and hold.
--	-----------	---

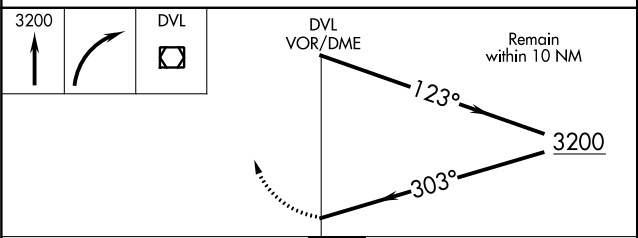
AWOS-3PT 125.875	MINNEAPOLIS CENTER 124.2 270.3	GRAND FORKS RADIO 122.3	UNICOM 122.8 (CTAF)
----------------------------	--	-----------------------------------	-------------------------------



ELEV 1470	D	TDZE 1450
-----------	----------	-----------



3200 ↑	DVL 	DVL VOR/DME Remain within 10 NM
-----------	---------	------------------------------------



CATEGORY	A	B	C	D
S-31	2020-1/2 570 (600-1/2)		2020-1/4 570 (600-1/4)	
C CIRCLING	2020-1 550 (600-1)		2240-2 1/4 770 (800-2 1/4)	2240-2 1/2 770 (800-2 1/2)

NC-1, 10 OCT 2019 to 07 NOV 2019

NC-1, 10 OCT 2019 to 07 NOV 2019