

BUCHANAN TWO DEPARTURE

AL-5320 (FAA)

BUCHANAN FIELD (CCR)
CONCORD, CALIFORNIA

GND CON
121.9
CONCORD TOWER *
119.7 (CTAF) 257.8
TRAVIS DEP CON
119.9 322.325

**TOP ALTITUDE:
ASSIGNED BY ATC**

SACRAMENTO
115.2 SAC
Chan 99

SCAGGS ISLAND
112.1 SGD
Chan 58
N38°10.76'-W122°22.39'
L-2-3

CONCORD
117.0 CCR
Chan 117
N38°02.70'-W122°02.71'

REJOY
N38°09.99'
W121°46.25'
L-2-3

CROIT
N38°03.37'
W122°11.66'
L-2-3

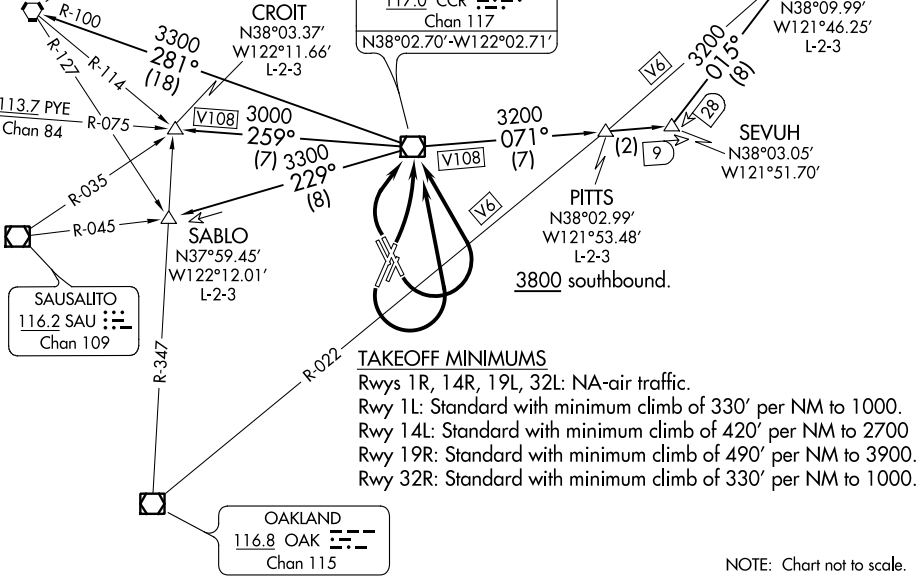
113.7 PYE
Chan 84

SABLO
N37°59.45'
W122°12.01'
L-2-3

SAUSALITO
116.2 SAU
Chan 109

TAKEOFF MINIMUMS
Rwys 1R, 14R, 19L, 32L: NA-air traffic.
Rwy 1L: Standard with minimum climb of 330' per NM to 1000.
Rwy 14L: Standard with minimum climb of 420' per NM to 2700
Rwy 19R: Standard with minimum climb of 490' per NM to 3900.
Rwy 32R: Standard with minimum climb of 330' per NM to 1000.

OAKLAND
116.8 OAK
Chan 115



SW-2, 10 OCT 2019 to 07 NOV 2019

SW-2, 10 OCT 2019 to 07 NOV 2019

DEPARTURE ROUTE DESCRIPTION

TAKEOFF RUNWAYS 1L, 14L, 19R: Climbing left turn direct CCR VOR/DME, thence. . . .
TAKEOFF RUNWAY 32R: Climbing right turn direct CCR VOR/DME, thence. . . .
. . . .on (transition) or (assigned route).

CROIT TRANSITION (BCHN2.CROIT): From over CCR VOR/DME on CCR R-259 to CROIT INT.

PITTS TRANSITION (BCHN2.PITTS): From over CCR VOR/DME on CCR R-071 to PITTS INT.

REJOY TRANSITION (BCHN2.REJOY): From over CCR VOR/DME on CCR R-071 and SAC R-195 to REJOY INT.

SABLO TRANSITION (BCHN2.SABLO): From over CCR VOR/DME on CCR R-229 to SABLO INT.

SCAGGS ISLAND TRANSITION (BCHN2.SGD): From over CCR VOR/DME on CCR R-281 and SGD R-100 to SGD VORTAC.

BUCHANAN TWO DEPARTURE