

LOC/DME I-CCR 108.5 Chan 22	APP CRS 185°	Rwy Idg TDZE Apt Elev	4400 22 26
--	------------------------	-----------------------------	---------------------------------------

LDA RWY 19R

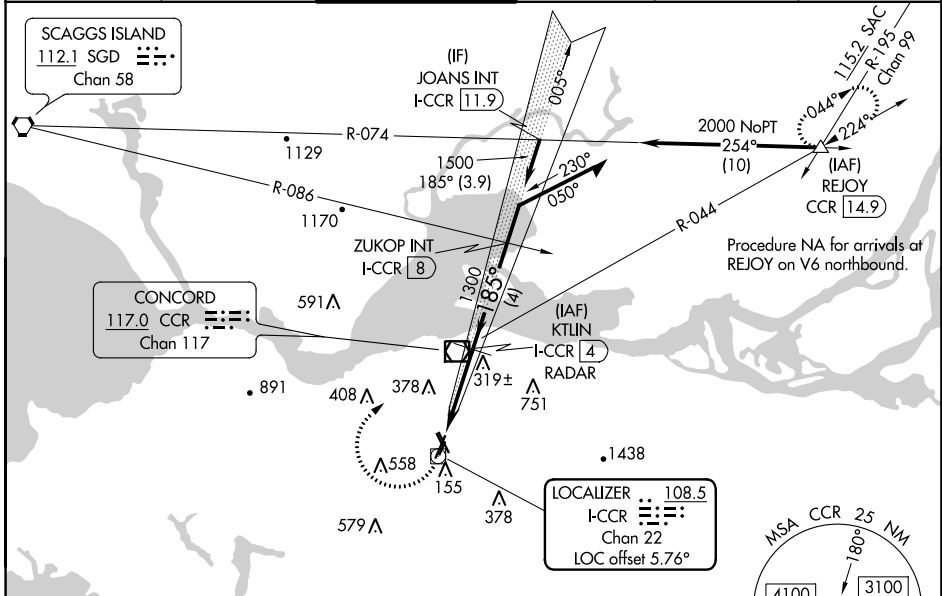
BUCHANAN FIELD (CCR)

DME or RADAR required.

⚠ Circling NA west of Rwy 1L-19R. Circling Rwy 1L, 19L, 32R NA at night. Rwy 19R helicopter visibility reduction below 3/4 SM NA. For inop ALS, increase S-19R Cats C/D visibility to 2 SM. *For inop ALS, increase S-19R Cats C/D visibility to 1 1/2 SM.

MALS MISSED APPROACH: Climbing right turn to 3000 direct CCR VOR/DME then on CCR VOR/DME R-044 to REJOY INT/CCR 14.9 DME and hold. *Missed approach requires minimum climb of 282 feet per NM to 1800.

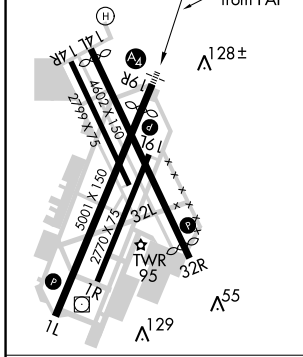
ATIS 124.7	TRAVIS APP CON 119.9 322.325	CONCORD TOWER* 119.7 (CTAF) 0257.8	GND CON 121.9	CLNC DEL 118.75	UNICOM 122.95
----------------------	--	--	-------------------------	---------------------------	-------------------------



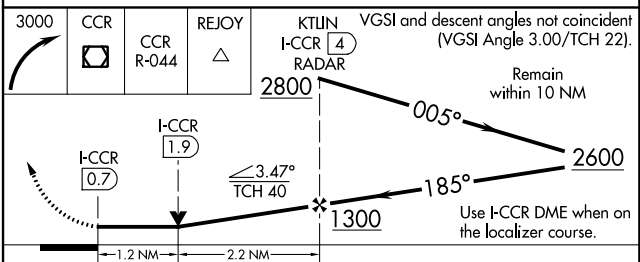
SW-2, 10 OCT 2019 to 07 NOV 2019

SW-2, 10 OCT 2019 to 07 NOV 2019

ELEV 26	TDZE 22
HIRL Rwy 1L-19R REIL Rwys 1L and 32R MIRL Rwy 14L-32R	
185° 3.4 NM from FAF	



Knots	60	90	120	150	180
Min:Sec	3:24	2:16	1:42	1:22	1:08



CATEGORY	A	B	C	D
S-19R*	440-3/4 418 (500-3/4)		440-1 418 (500-1)	
S-19R	780-3/4 758 (800-3/4)	780-1 758 (800-1)	780-1 7/8 758 (800-1 7/8)	
CIRCLING	780-1 754 (800-1)	780-1 1/4 754 (800-1 1/4)	960-2 3/4 934 (1000-2 3/4)	1300-3 1274 (1300-3)