


# RNAV (GPS) RWY 19R

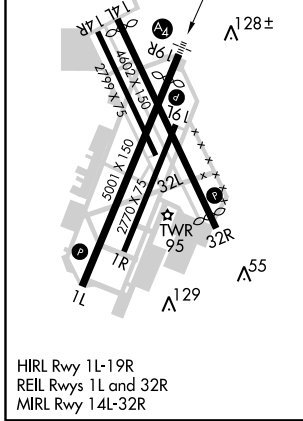
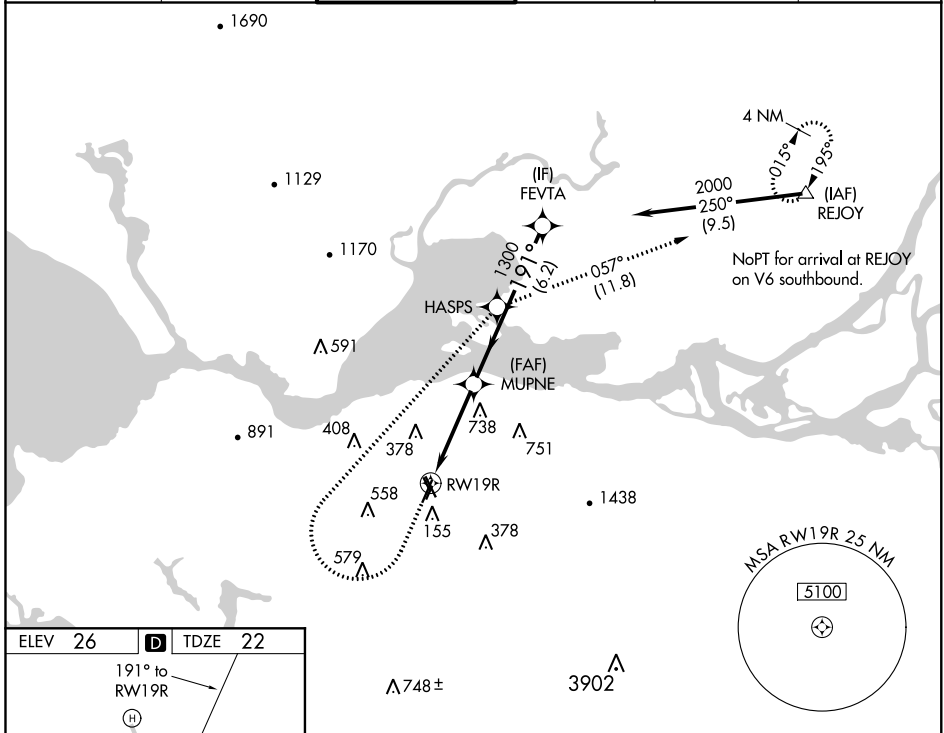
BUCHANAN FIELD (CCR)

WAAS CH <b>86424</b> <b>W19A</b>	APP CRS <b>191°</b>	Rwy Idg <b>4400</b> TDZE <b>22</b> Apt Elev <b>26</b>
--	------------------------	---

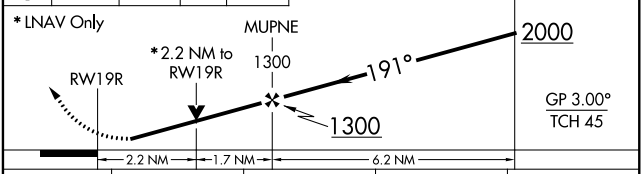
**⚠** Circling to Rwy's 1L, 1R, 32L, 32R and 19L NA at night. Circling NA west of Rwy's 1L and 19R. Rwy 19R helicopter visibility reduction below ¾ SM NA. DME/DME RNP-0.3 NA. Inop table does not apply to LPV. For inop ALS, increase LNAV Cat C and D visibility to 3 SM.

**MALS**  MISSED APPROACH: (Do not exceed 190K until HASPS) Climb to 500 then climbing right turn to 3000 direct HASPS then on track 057° direct REJOY and hold.

ATIS <b>124.7</b>	TRAVIS APP CON <b>119.9 322.325</b>	CONCORD TOWER* <b>119.7 (CTAF) 257.8</b>	GND CON <b>121.9</b>	CLNC DEL <b>118.75</b>	UNICOM <b>122.95</b>
----------------------	--	---	-------------------------	---------------------------	-------------------------



ELEV 26	<b>D</b>	TDZE 22
---------	----------	---------



CATEGORY	A	B	C	D
LPV DA	272-¾		250 (300-¾)	
LNAV MDA	980-1 958 (1000-1)	980-1¼ 958 (1000-1¼)	980-2½	958 (1000-2½)
<b>C</b> CIRCLING	980-1¼ 954 (1000-1¼)	980-1½ 954 (1000-1½)	980-3 954 (1000-3)	1300-3 1274 (1300-3)

SW-2, 10 OCT 2019 to 07 NOV 2019

SW-2, 10 OCT 2019 to 07 NOV 2019