

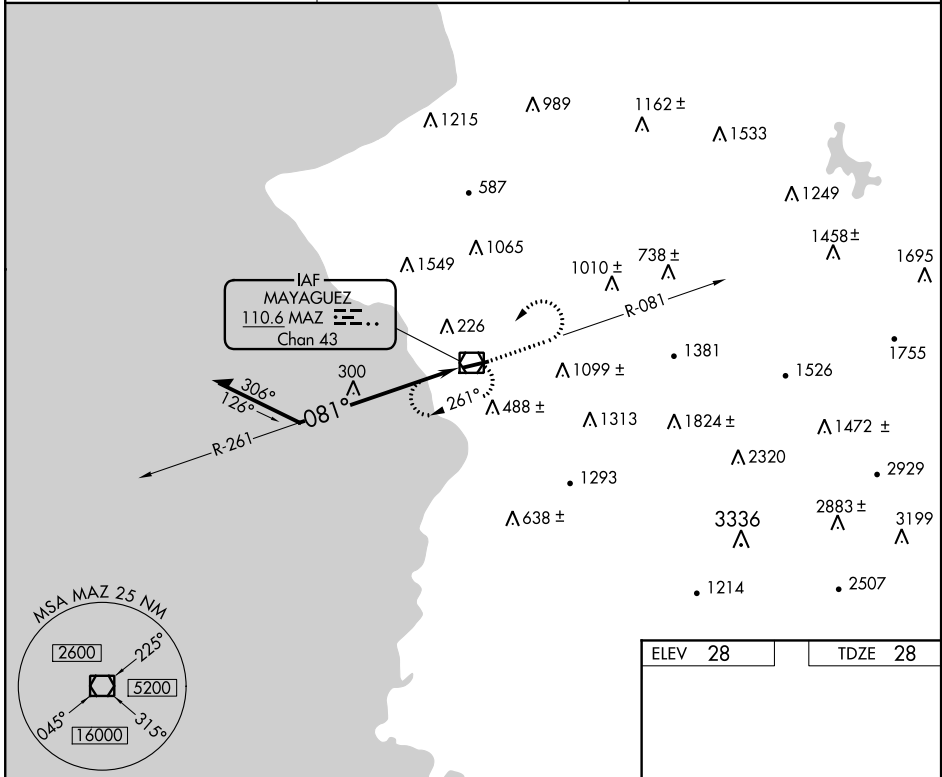
VOR/DME MAZ 110.6 Chan 43	APP CRS 081°	Rwy Idg 4998 TDZE 28 Apt Elev 28
---	------------------------	---

VOR RWY 9
EUGENIO MARIA DE HOSTOS (MAZ)(TJMZ)

⚠ Circling to Rwy 27 NA at night. When VGSI inoperative, procedure NA at night. Visibility reduction by helicopters NA. When Class E surface area not in effect, except for operators with approved weather reporting service, procedure NA.

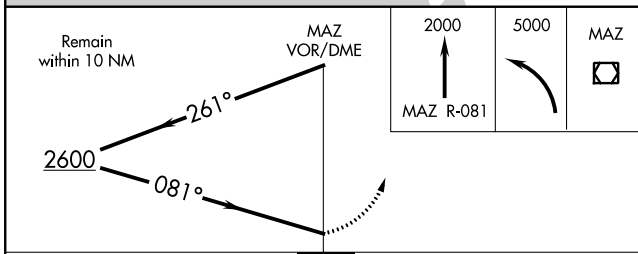
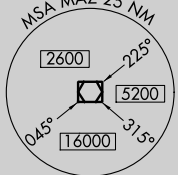
⚠ MISSED APPROACH: Climb to 2000 on MAZ VOR/DME R-081 then climbing left turn to 5000 direct MAZ VOR/DME and hold, continue climb-in-hold to 5000.

SAN JUAN CENTER 118.75 269.0	CLNC DEL 121.7	UNICOM 122.8 (CTAF) 0
--	--------------------------	---------------------------------

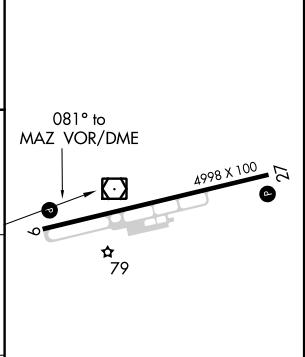


SE-3, 10 OCT 2019 to 07 NOV 2019

SE-3, 10 OCT 2019 to 07 NOV 2019



ELEV 28	TDZE 28
---------	---------



CATEGORY	A	B	C	D
S-9	1100-1¼ 1072 (1100-1¼)	1100-1½ 1072 (1100-1½)	1100-3 1072 (1100-3)	NA
CIRCLING	1100-1¼ 1072 (1100-1¼)	1100-1½ 1072 (1100-1½)	1100-3 1072 (1100-3)	NA

REIL Rwy 9 0
MIRL Rwy 9-27