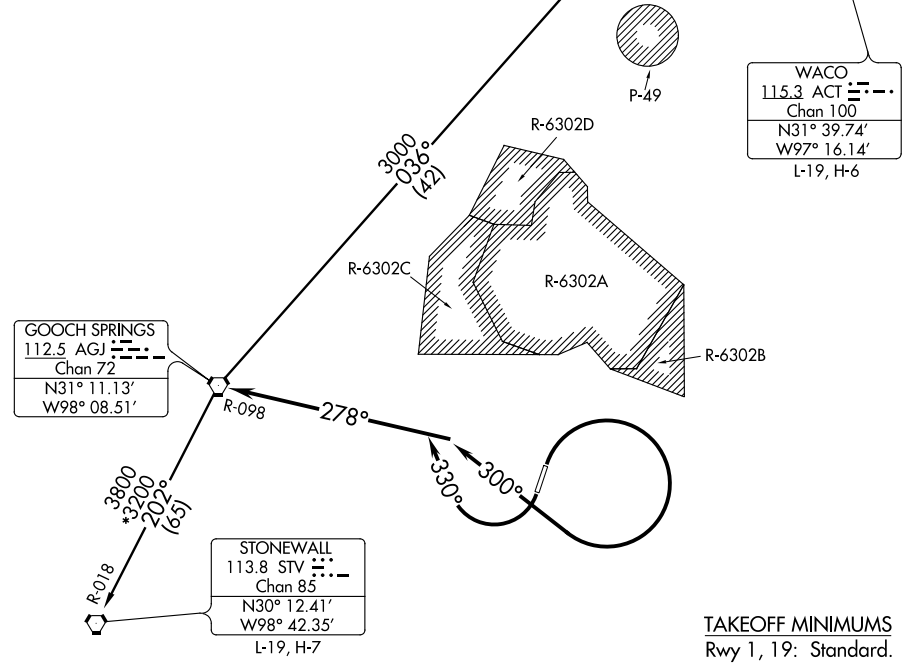


# LAMP5 SEVEN DEPARTURE

AWOS-3PT  
128.575  
GRAY DEP CON  
120.075 323.15  
CLNC DEL  
121.7

**TOP ALTITUDE:  
ASSIGNED BY ATC**



NOTE: RADAR required.

NOTE: WACO TRANSITION for aircraft inbound to terminal area airports.

NOTE: Chart not to scale.

## DEPARTURE ROUTE DESCRIPTION

TAKEOFF RWY 1: Climbing right turn heading 300° (to assigned altitude) to intercept and proceed on AGJ R-098. Thence . . . .

TAKEOFF RWY 19: Climbing right turn heading 330° (to assigned altitude) to intercept and proceed on AGJ R-098. Thence . . . .

. . . . on (transition) or (assigned route).

STONEWALL TRANSITION (LAMP57.STV): From over AGJ VORTAC on AGJ R-202 and STV R-018 to STV VORTAC.

WACO TRANSITION (LAMP57.ACT): From over AGJ VORTAC on AGJ R-036 to SONET INT, then on ACT R-271 to ACT VORTAC.

# LAMP5 SEVEN DEPARTURE

(LAMP57.AGJ) 10OCT19

SC-3, 10 OCT 2019 to 07 NOV 2019

SC-3, 10 OCT 2019 to 07 NOV 2019