

WAAS CH <b>50239</b> <b>W01A</b>	APP CRS <b>012°</b>	Rwy Idg TDZE Apt Elev	<b>4651</b> <b>844</b> <b>848</b>
--	------------------------	-----------------------------	---

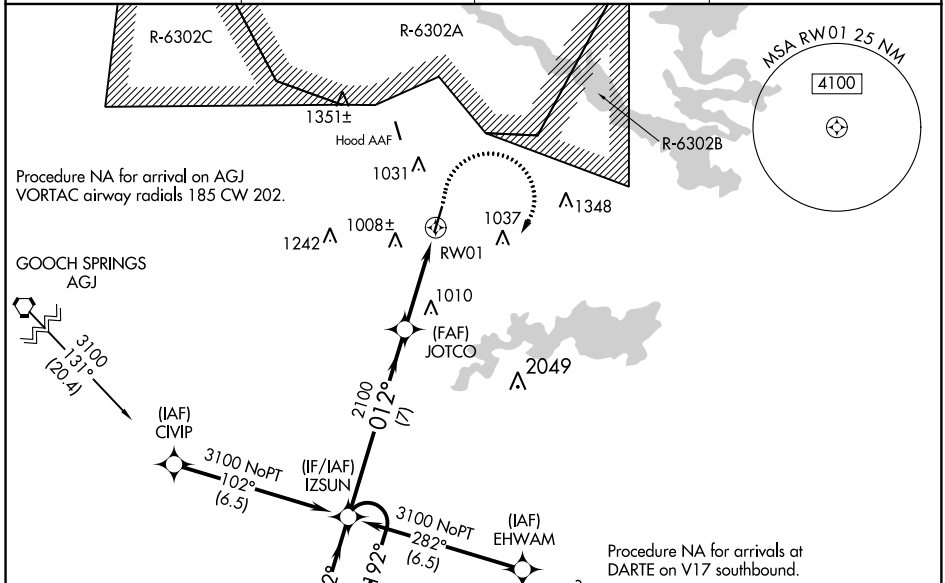
# RNAV (GPS) RWY 1

SKYLARK FIELD (ILE)

▼  
For uncompensated Baro-VNAV systems, LNAV/VNAV NA below -16° (4°F) or above 54°C (130°F). DME/DME RNP-0.3 NA. Circling Rwy 19 NA at night.

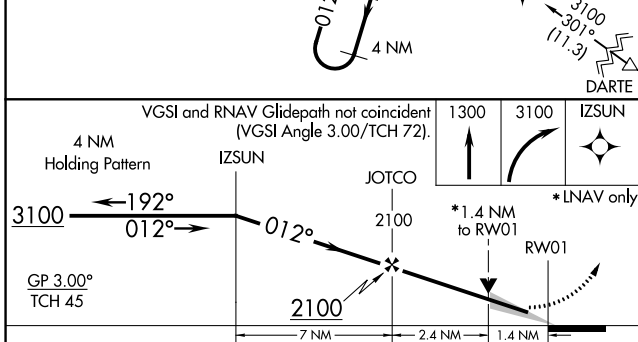
MISSED APPROACH: Climb to 1300 then Climbing right turn to 3100 direct IZSUN and hold.

AWOS-3PT <b>128.575</b>	GRAY APP CON <b>120.075 323.15</b>	CLNC DEL <b>121.7</b>	UNICOM <b>122.7 (CTAF)</b> ☎
----------------------------	---------------------------------------	--------------------------	---------------------------------

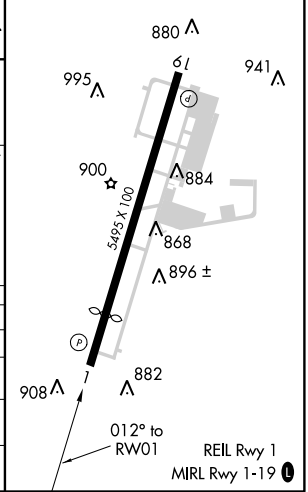


SC-3, 10 OCT 2019 to 07 NOV 2019

SC-3, 10 OCT 2019 to 07 NOV 2019



ELEV <b>848</b>	<b>D</b> TDZE <b>844</b>
-----------------	--------------------------



CATEGORY	A	B	C	D
LPV DA	1044-3/4	200 (200-3/4)		NA
LNAV/VNAV DA	1608-3	764 (800-3)		NA
LNAV MDA	1360-1	516 (600-1)	1360-1 3/8 516 (600-1 3/8)	NA
<b>C</b> CIRCLING	1360-1	512 (500-1)	1440-1 1/2 592 (600-1 1/2)	NA