

KILLEEN, TEXAS

AL-5344 (FAA)

18312

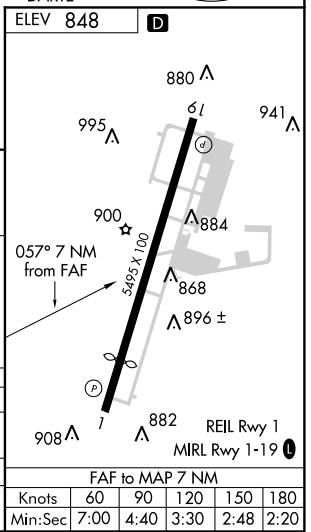
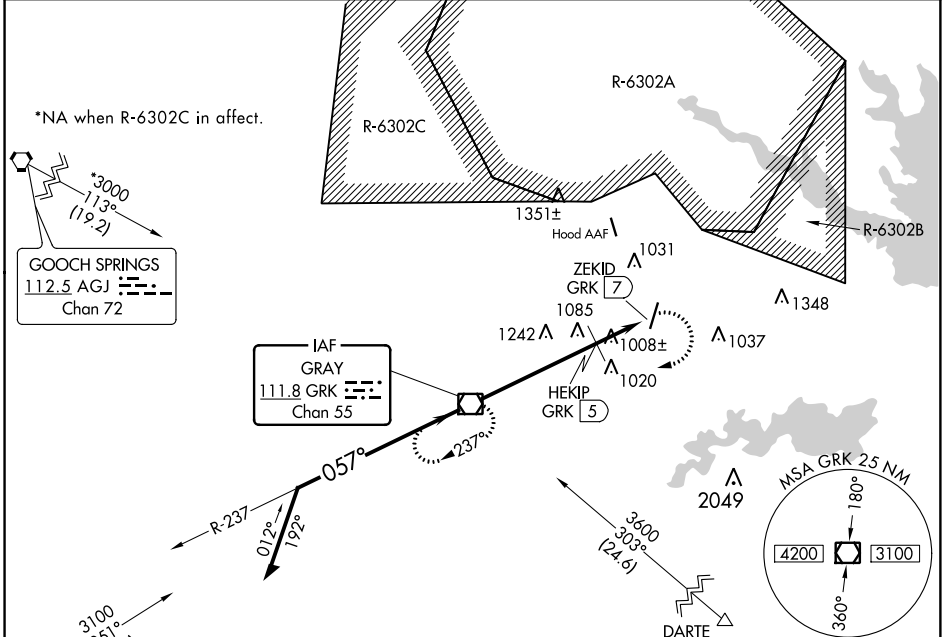
VOR/DME GRK <b>111.8</b> Chan <b>55</b>	APP CRS <b>057°</b>	Rwy Idg TDZE Apt Elev <b>N/A</b> <b>N/A</b> <b>848</b>
---	------------------------	--

**VOR-A**  
SKYLARK FIELD (ILE)

**NA** Circling Rwy 19 NA at night.  
When local altimeter setting not received, use Robert Gray AAF altimeter setting and increase all MDA 60 feet.

MISSED APPROACH: Climbing right turn to 3000 direct GRK VOR/DME and hold.

AWOS-3PT <b>128.575</b>	GRAY APP CON <b>120.075 323.15</b>	CLNC DEL <b>121.7</b>	UNICOM <b>122.7</b> (CTAF) <b>D</b>
----------------------------	---------------------------------------	--------------------------	--



Remain within 10 NM	GRK VOR/DME	3000	GRK
#1680 when using Robert Gray AAF altimeter setting.	2000	#1620	HEKIP GRK 5, ZEKID GRK 7
		5 NM	2 NM

CATEGORY	A	B	C	D
<b>C</b> CIRCLING	1620-1 772 (800-1)	1620-1¼ 772 (800-1¼)	1620-2¼ 772 (800-2¼)	NA
HEKIP FIX MINIMUMS (DME REQUIRED)				
<b>C</b> CIRCLING	1320-1 472 (500-1)	1360-1 512 (600-1)	1440-1½ 592 (600-1½)	NA

KILLEEN, TEXAS  
Amdt 4A 08NOV18

31°05'N-97°41'W

SKYLARK FIELD (ILE)  
**VOR-A**

SC-3, 10 OCT 2019 to 07 NOV 2019

SC-3, 10 OCT 2019 to 07 NOV 2019