

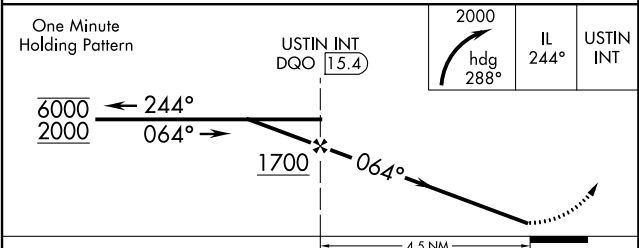
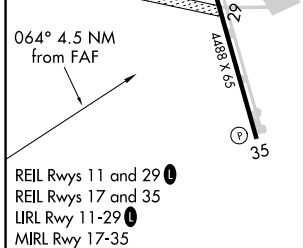
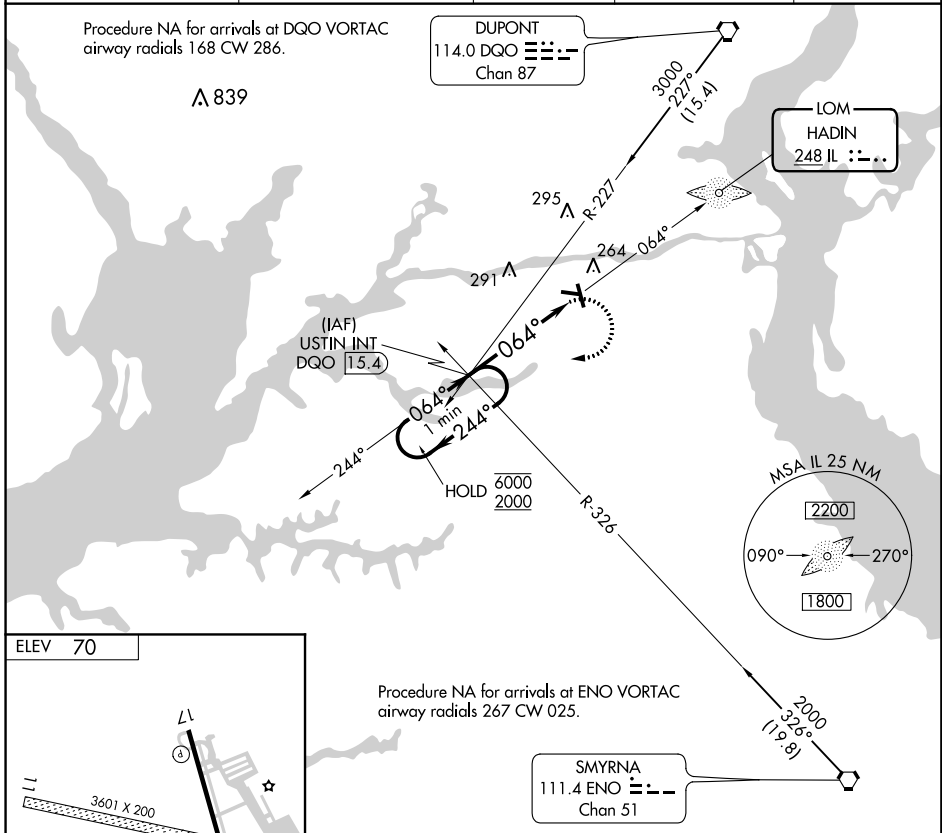
LOM IL 248	APP CRS 064°	Rwy Idg TDZE Apt Elev	N/A N/A 70
----------------------	------------------------	-----------------------------	---------------------------------------

NDB-A
SUMMIT (E.V.Y)

⚠ NA Circling NA to Rws 11 and 29. Circling Rwy 17 NA at night. When local altimeter setting not received, use Wilmington altimeter setting and increase all MDA 40 feet and Circling Cat C visibility ¼ SM.

MISSED APPROACH: Climbing right turn to 2000 on heading 288° and 244° bearing from HADIN LOM to USTIN INT/DGO 15.4 DME and hold, continue climb-in-hold to 2000.

AWOS-3 132.325	PHILADELPHIA APP CON 118.35 323.1	CLNC DEL 125.3	UNICOM 122.725 (CTAF)	123.5 ⓪
--------------------------	---	--------------------------	---------------------------------	-----------------------



FAF to MAP 4.5 NM								
Knots	60	90	120	150	180			
Min:Sec	4:30	3:00	2:15	1:48	1:30			
CATEGORY	A		B		C		D	
CIRCLING	660-1		590 (600-1)		660-1½		590 (600-1½)	
					660-2		590 (600-2)	

NE-3, 10 OCT 2019 to 07 NOV 2019

NE-3, 10 OCT 2019 to 07 NOV 2019