

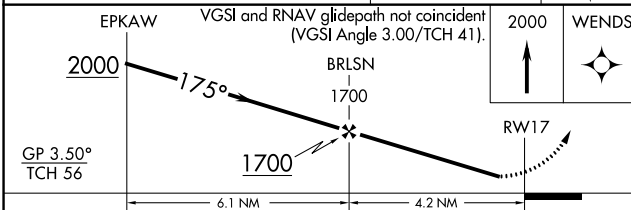
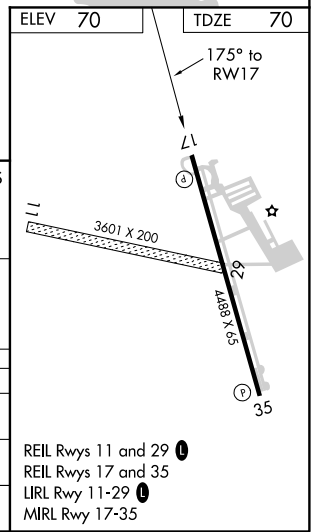
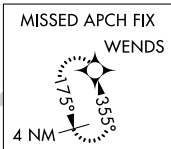
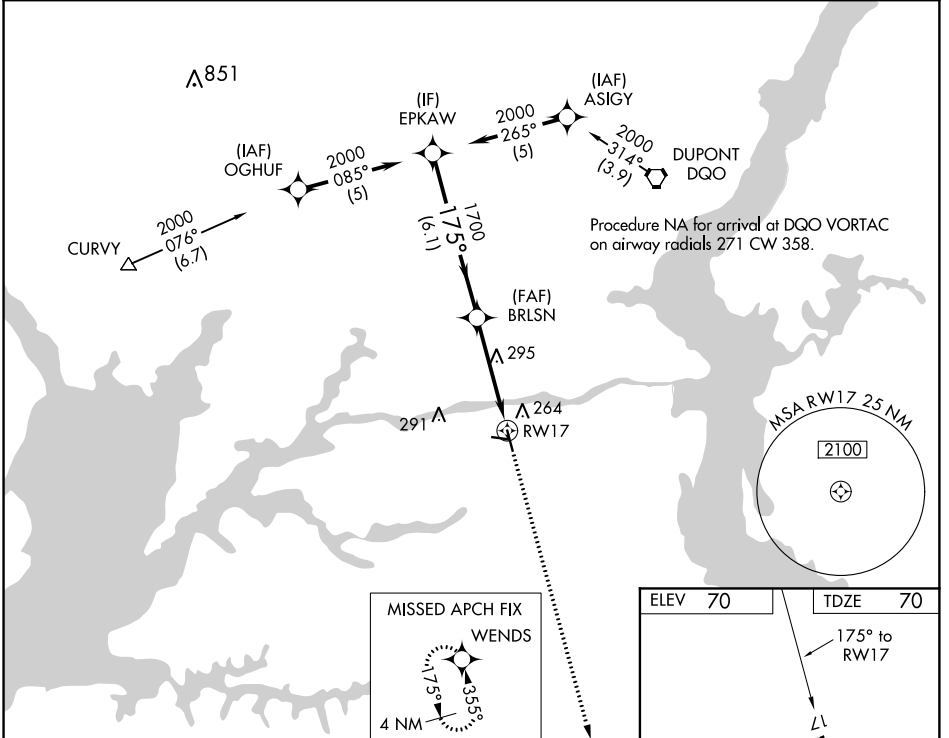
WAAS CH 49002 W17A	APP CRS 175°	Rwy Idg TDZE Apt Elev	4488 70 70
--	------------------------	-----------------------------	---------------------------------------

RNAV (GPS) RWY 17

SUMMIT (E.V.Y)

RNP APCH.		MISSED APPROACH: Climb to 2000 direct WENDS and hold.
<p>▼ Procedure NA at night. Rwy 17 helicopter visibility reduction below 1 SM NA. ▲NA Baro-VNAV NA when using Wilmington altimeter setting. For uncompensated Baro-VNAV systems, LNAV/VNAV NA below -15°C or above 47°C. When local altimeter setting not received, use Wilmington altimeter setting and increase all DA 27 feet, all MDA 40 feet and LNAV Cat C visibility ½ SM.</p>		

AWOS-3 132,325	PHILADELPHIA APP CON 118.35 323.1	CLNC DEL 125.3	UNICOM 122.725 (CTAF)	123.5 ①
--------------------------	---	--------------------------	---------------------------------	----------------



CATEGORY	A	B	C	D
LPV DA	541-1½	471 (500-1½)		NA
LNAV/VNAV DA	619-1¾	549 (600-1¾)		NA
LNAV MDA	560-1	490 (500-1)	560-1⅞ 490 (500-1⅞)	NA

REIL Rwy 11 and 29 ①
 REIL Rwy 17 and 35
 LIRL Rwy 11-29 ①
 MIRL Rwy 17-35

NE-3, 10 OCT 2019 to 07 NOV 2019

NE-3, 10 OCT 2019 to 07 NOV 2019